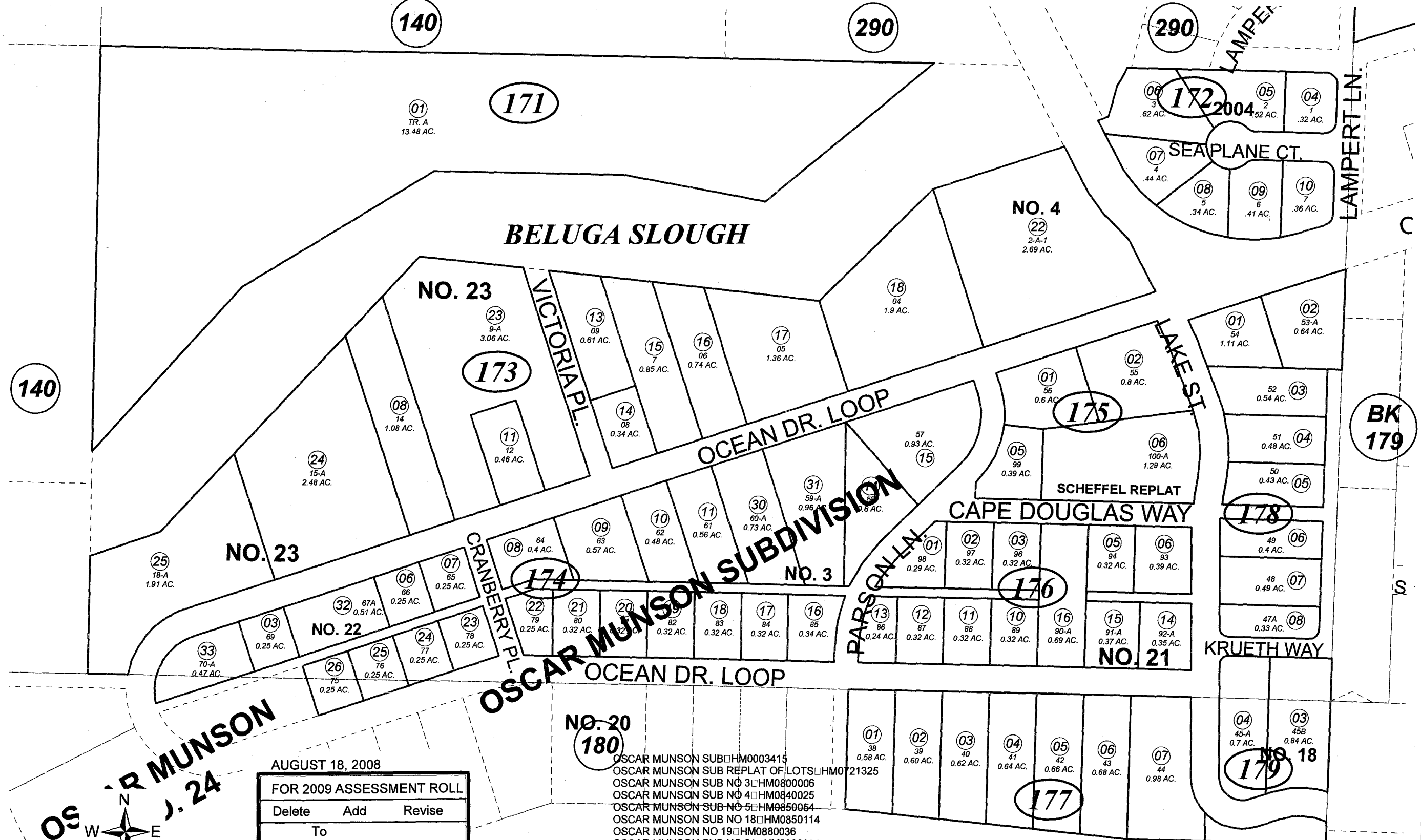


POR. S1/2 SE1/4 SEC. 20 & LOTS 1 & 2 SEC. 29, T06S, R13W, S.M.

177-170



AUGUST 18, 2008

FOR 2009 ASSESSMENT ROLL

Delete	Add	Revise
	To	
27-29		

Assessor's Map
Kenai Peninsula Borough

- OSCAR MUNSON SUB HM0003415
- OSCAR MUNSON SUB REPLAT OF LOTS HM0721325
- OSCAR MUNSON SUB NO 3 HM0800006
- OSCAR MUNSON SUB NO 4 HM0840025
- OSCAR MUNSON SUB NO 5 HM0850064
- OSCAR MUNSON SUB NO 18 HM0850114
- OSCAR MUNSON NO 19 HM0880036
- OSCAR MUNSON SUB NO 21 HM2003094
- OSCAR MUNSON SUB NO 22 HM2004023
- OSCAR MUNSON SUB SCHEFFEL REPLAT HM2004053
- OSCAR MUNSON 2004 HM2004064
- OSCAR MUNSON SUB BRANT REPLAT HM2005048
- OSCAR MUNSON NO 23 HM2006066

This map is prepared for Kenai Peninsula Borough Assessing Dept. use only and is not intended for conveyance nor is it a survey.

Note- Assessor's block Numbers Shown in Ellipses
Assessor's Parcel Numbers Shown in Circles