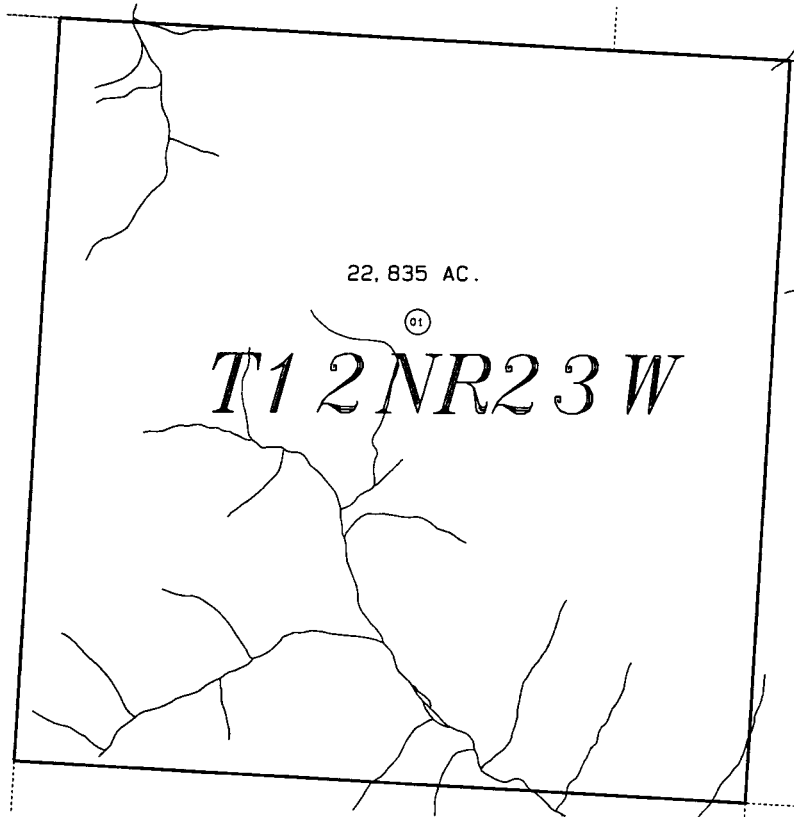


T12N, R23W, SEWARD MERIDIAN

211-010

BK  
201



22,835 AC.

01

T1 2 NR 2 3 W

2

15



DATE: MAY 4, 1999

FOR 19 00 ASSESSMENT ROLL		
DELETE	ADD	REVISED
TO		
REVISED PAGE		

Assessor's Map  
Kenai Peninsula Borough

THIS MAP IS PREPARED  
FOR KENAI PENINSULA  
BOROUGH ASSESSING DEPT.  
USE ONLY AND IS NOT  
INTENDED FOR ANY  
OTHER USE OR REPRESENTATION

NOTE - Assessor's Block Numbers Shown In Ellipses  
Assessor's Parcel Numbers Shown In Circles