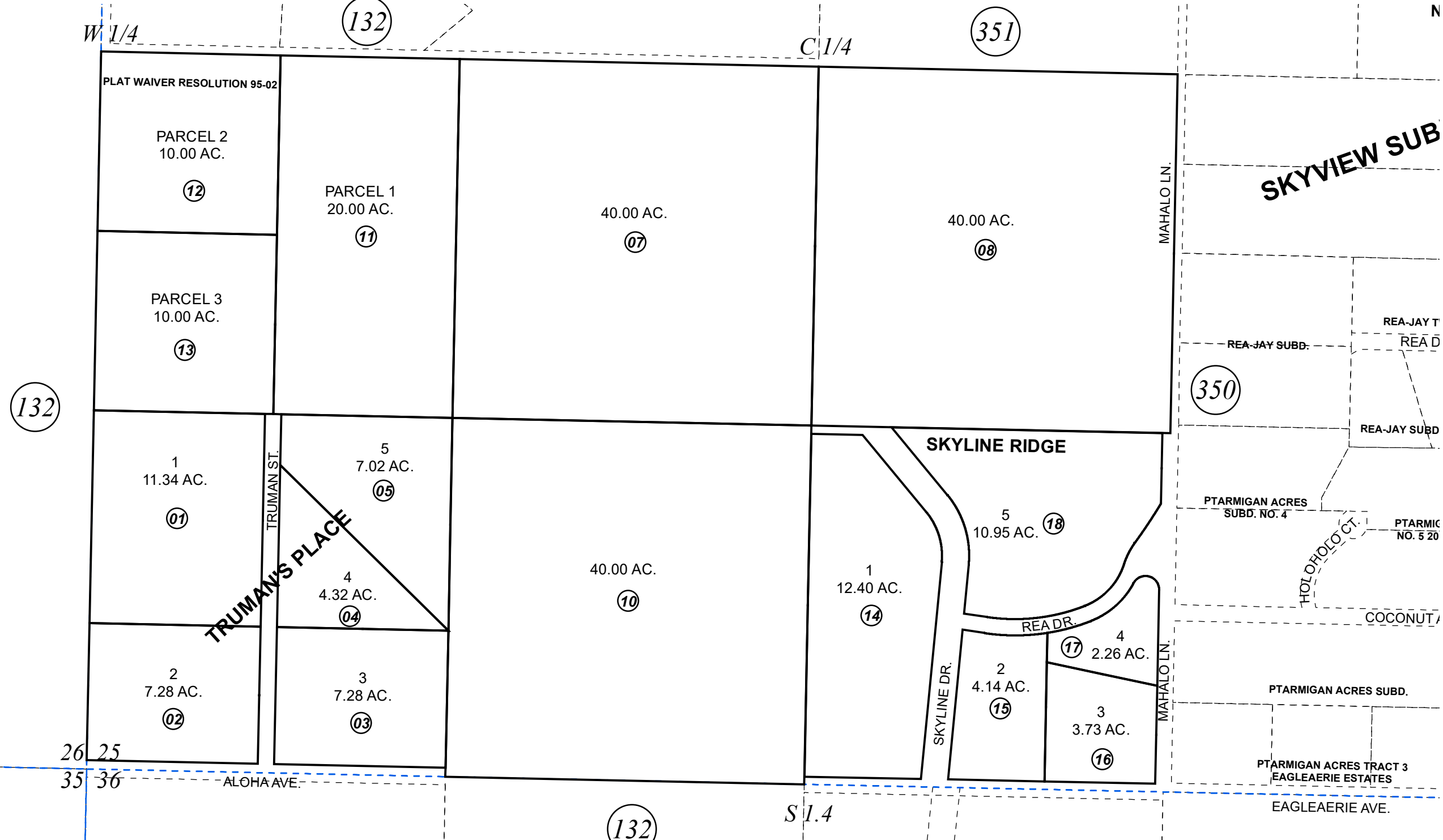


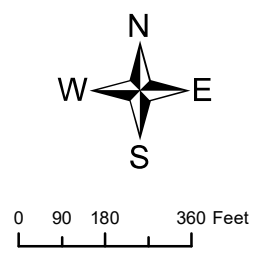
SW 1/4 & W 1/2 SE 1/4 SEC. 25, T05S, R13W, S.M.

171-352



JULY 11, 2018

For 2019 assessment roll		
Delete	Add	Revise
To		
09	14-18	



Assessor's Map  
Kenai Peninsula Borough

TRUMAN'S PLACE SUB HM0850061  
SKYLINE RIDGE SUB HM2018023

This map is prepared for Kenai Peninsula Borough Assessing Dept. use only and is not intended for conveyance nor is it a survey.  
Note- Assessor's block Numbers Shown in Ellipses  
Assessor's Parcel Numbers Shown in Circles