

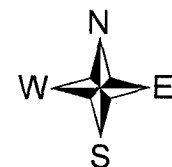
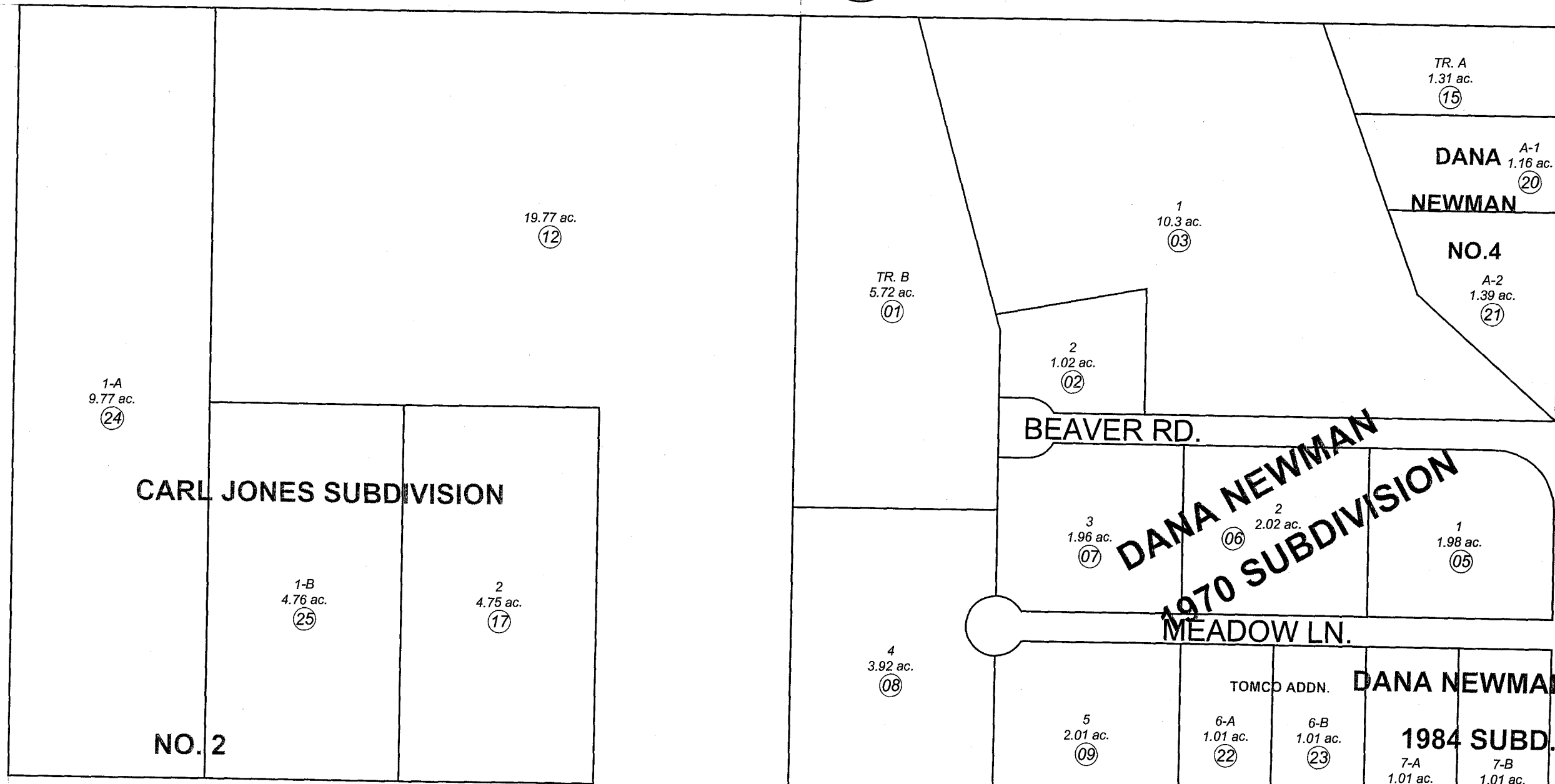
S1/2 SE1/4 SEC. 2, T06S, R13W, S.M.

174-220

060

400

440



DECEMBER 23, 2003

For 2004 assessment roll		
Delete	Add	Revise
	To	
16	24,25	

Assessor's Map  
Kenai Peninsula Borough

DANA NEWMAN SUB □ HM0690740  
 DANA NEWMAN 1970 SUB □ HM0700157  
 CARL JONES SUB □ HM0790094  
 DANA NEWMAN 1984 SUB □ HM0840093  
 DANA NEWMAN SUB NO 4 □ HM0850099  
 DANA NEWMAN 1970 SUB TOMCO ADDN □ HM0970045  
 CARL JONES SUB NO 2 □ HM2003057

This map is prepared for Kenai Peninsula Borough Assessing Dept. use only and is not intended for conveyance nor is it a survey.

Note- Assessor's block Numbers Shown in Ellipses  
 Assessor's Parcel Numbers Shown in Circles