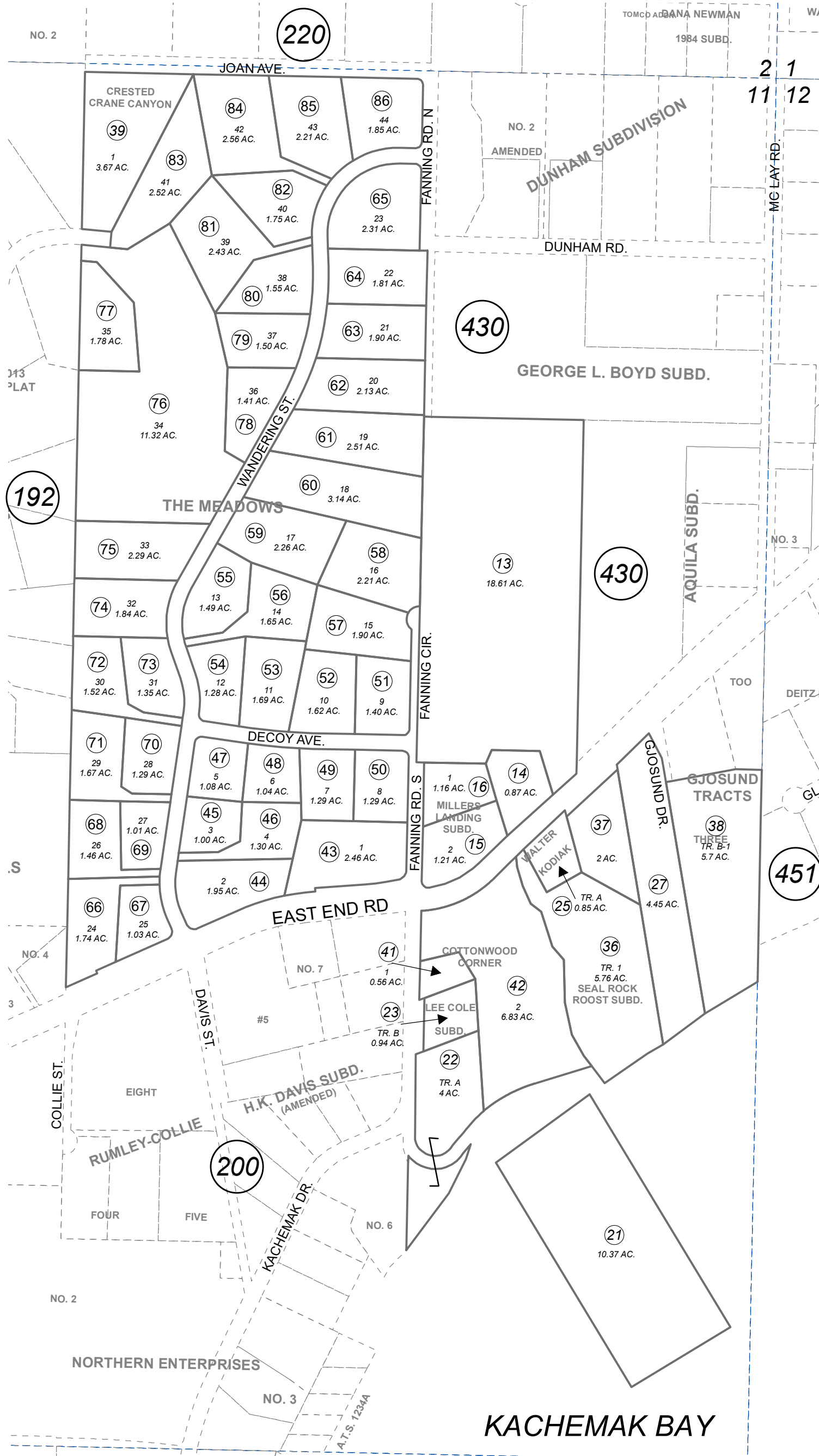


174-210

POR. SEC. 11, T06S, R13W, S.M.

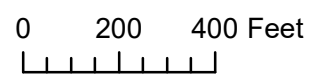


This map is prepared for Kenai Peninsula Borough Assessing Dept. use only and is not intended for conveyance nor is it a survey.

Note- Assessor's block Numbers Shown in Ellipses Assessor's Parcel Numbers Shown in Circles

- TRA H K DAVIS SUB HM0610049
- MILLERS LANDING SUB HM0730124
- LEE COLE SUB HM0750034
- WALTER KODIAK SUB HM0780044
- SEAL ROCK ROOST SUB HM0800065
- GJOSUND TRACTS THREE SUB HM0900040
- CRESTED CRANE CANYON HM2005064
- COTTONWOOD CORNER HM2011037
- THE MEADOWS HM2021016

Assessor's Map  
Kenai Peninsula Borough



JULY 27, 2021

| For 2022 assessment roll |          |
|--------------------------|----------|
| Delete                   | Add      |
|                          | Revise   |
| 40                       | To 43-86 |