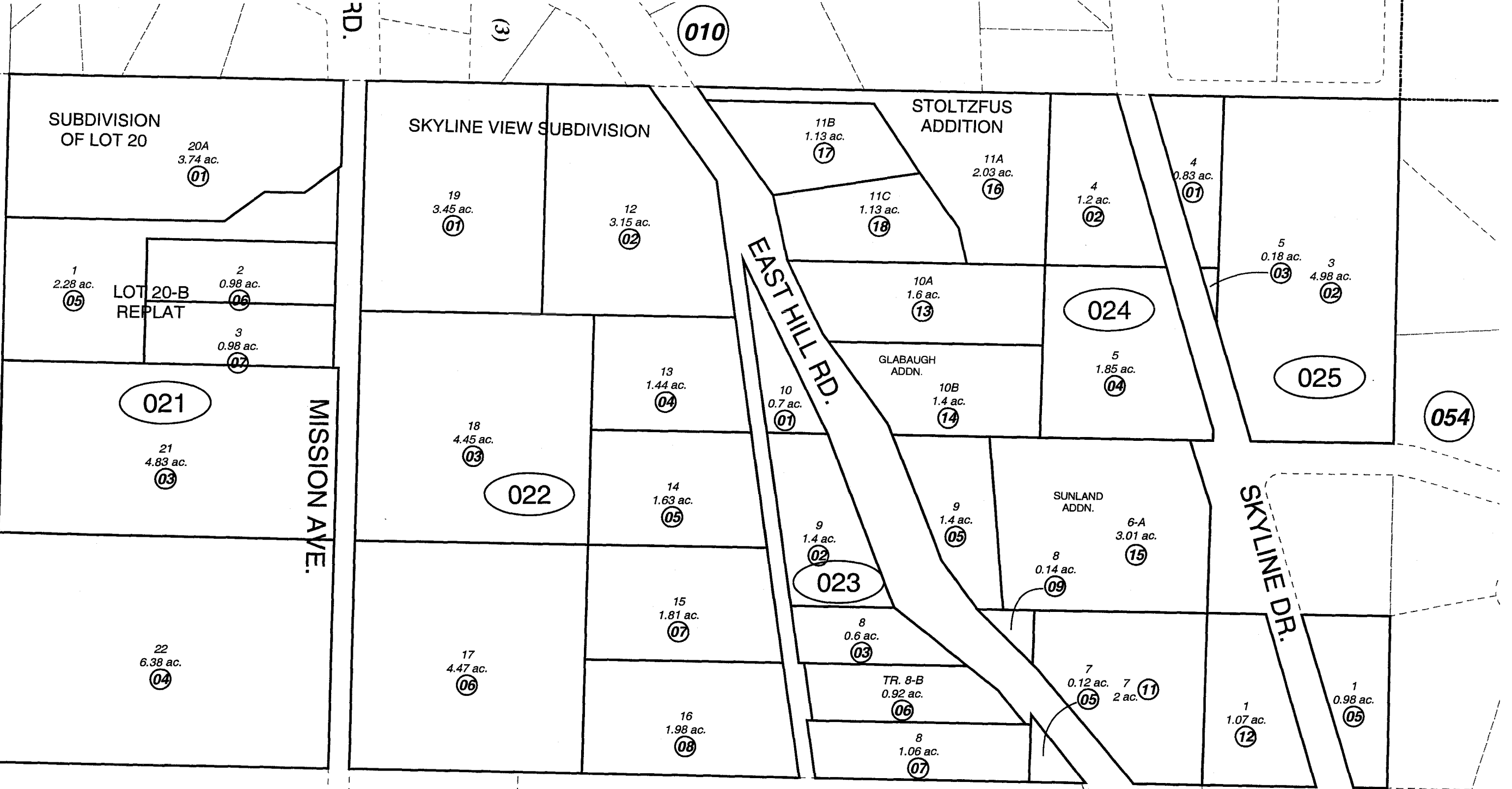


W1/2 SW1/4 SEC. 9, T06S, R13W, S.M.

174-020



BK 179

MAY 27, 2004

For 2005 assessment roll		
Delete	Add	Revise
	To	
02401	02416	
	THRU	
	02418	

NORTH

Assessor's Map
Kenai Peninsula Borough

SKYLINE VIEW SUB HM 0002273
 SKYLINE VIEW SUB HM 0542273
 SKYLINE VIEW SUB LOT 20-B REPLAT HM 0820078
 SKYLINE VIEW SUB ROY JOHNSON HM 0840102
 SKYLINE VIEW SUB HM 0860050
 SKYLINE VIEW SUB SUNLAND ADDN HM 20010049
 SKYLINE VIEW SUB STOLTZFUS ADDN HM 2004012

This map is prepared for Kenai Peninsula Borough Assessing Dept. use only and is not intended for conveyance nor is it a survey.

Note- Assessor's block Numbers Shown in Ellipses
 Assessor's Parcel Numbers Shown in Circles