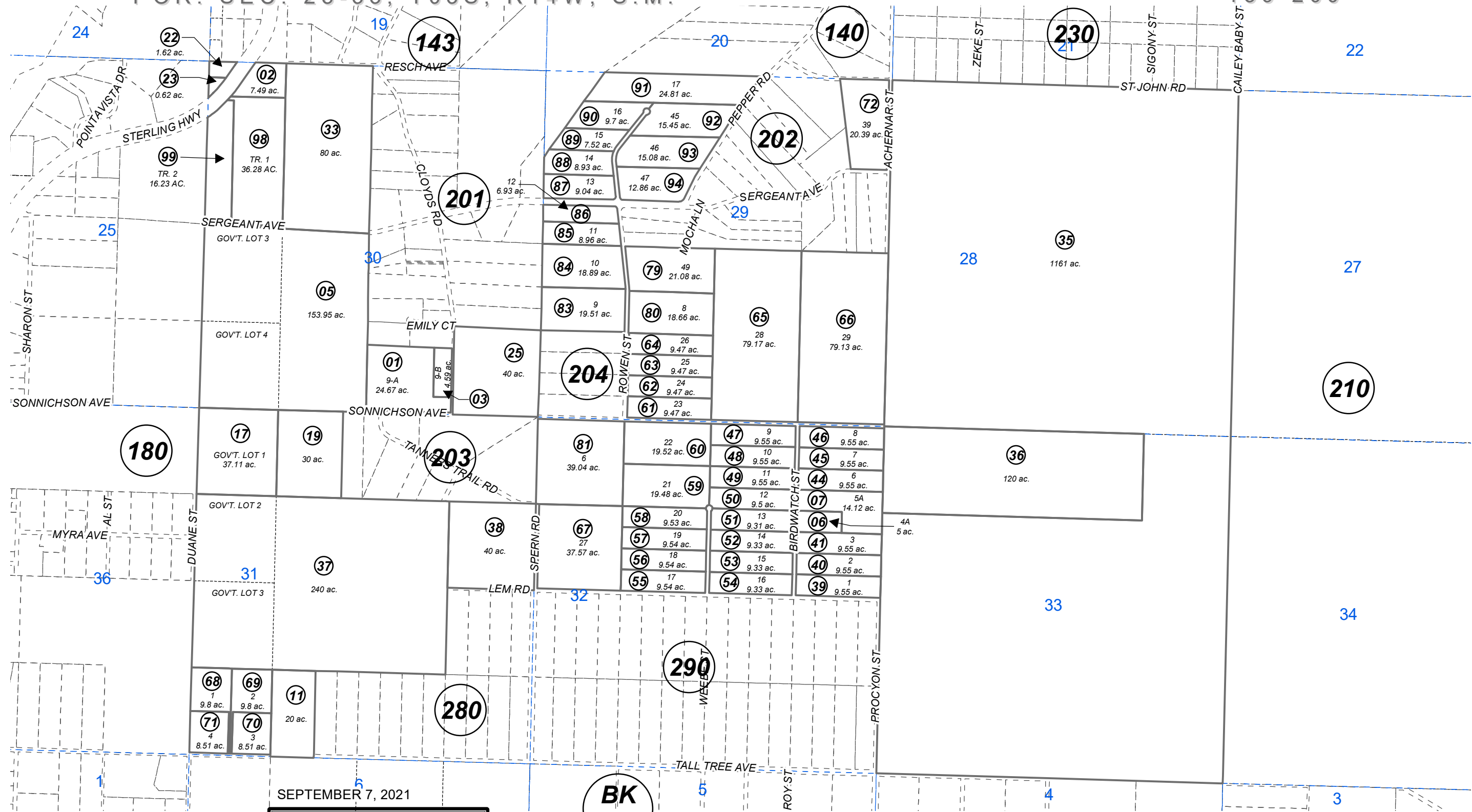


POR. SEC. 28-33, T03S, R14W, S.M.

159-200



0 1,000 2,000 Feet

SEPTEMBER 7, 2021

For 2022 assessment roll		
Delete	Add	Revise
To		
97	01,03	

**BK 165**

Assessor's Map  
Kenai Peninsula Borough

EAGLE ESTATES SUB HM0930026  
 ISLAND LOAM SUB HM0940010  
 STARISKI MEADOWS HM0970062  
 PIPER'S HAVEN UNIT 4 HM0980080  
 ANCHOR MILL SUB HM2004075  
 RECORD OF SURVEY HM2010034  
 EAGLE ESTATES 2012 REPLAT HM2012040  
 PIPER'S HAVEN 2021 REPLAT HM2021028

This map is prepared for Kenai Peninsula Borough Assessing Dept. use only and is not intended for conveyance nor is it a survey.  
 Note- Assessor's block Numbers Shown in Ellipses  
 Assessor's Parcel Numbers Shown in Circles