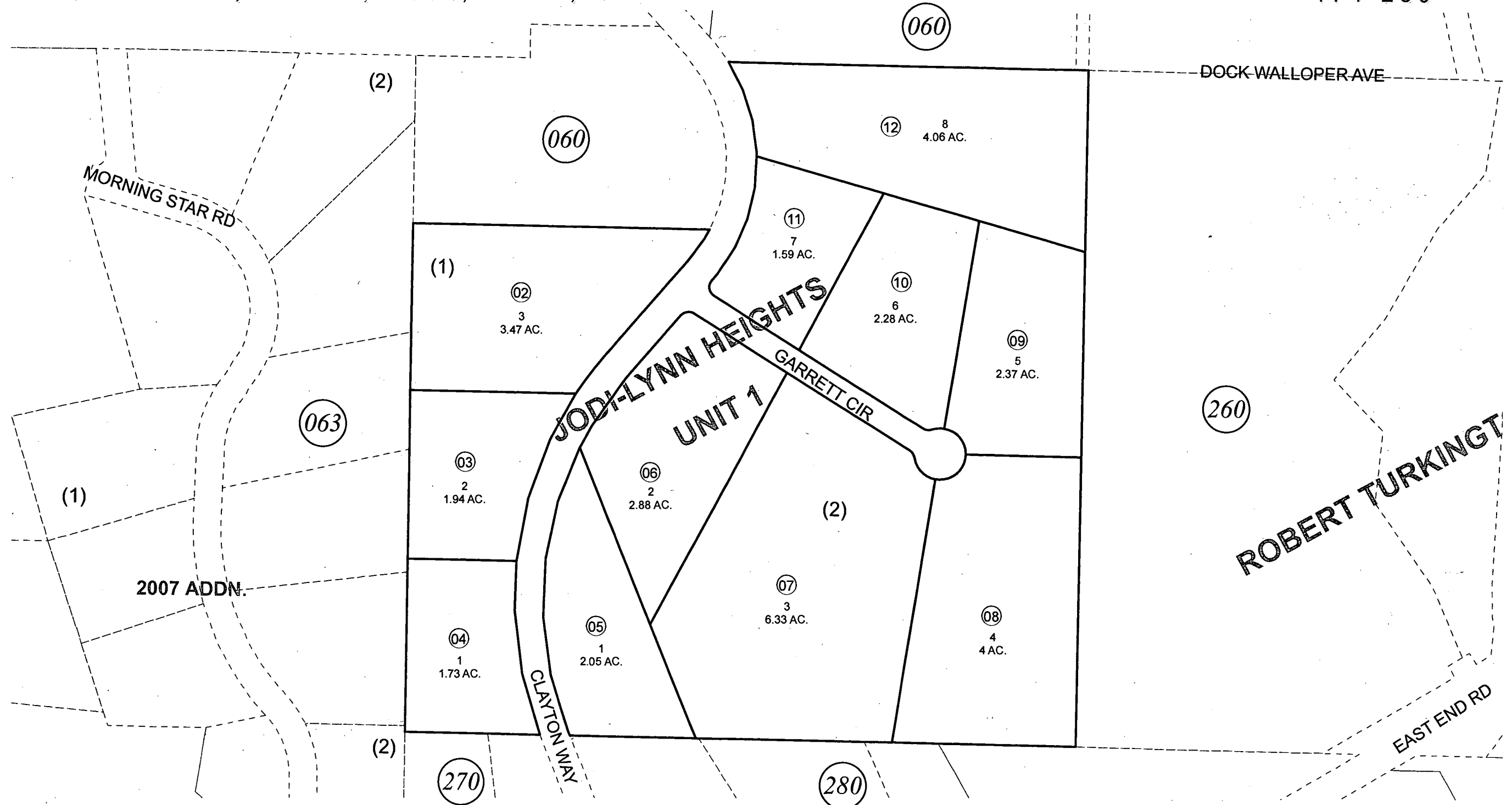
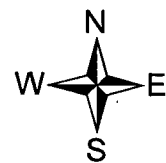


NW1/4 SE1/4, SEC. 1, T06S, R13W, S.M.

174-250



JANUARY 2, 2013



For 2013 assessment roll		
Delete	Add	Revise
	To	
01	174060+	

Assessor's Map
Kenai Peninsula Borough

JODI-LYNN HEIGHTS SUB HM0741677
 JODI-LYNN HEIGHTS SUB # 1 HM0741677
 JODI-LYNN HEIGHTS SUB UNIT 1 HM0741677

This map is prepared for Kenai Peninsula Borough Assessing Dept. use only and is not intended for conveyance nor is it a survey.
 Note- Assessor's block Numbers Shown in Ellipses
 Assessor's Parcel Numbers Shown in Circles