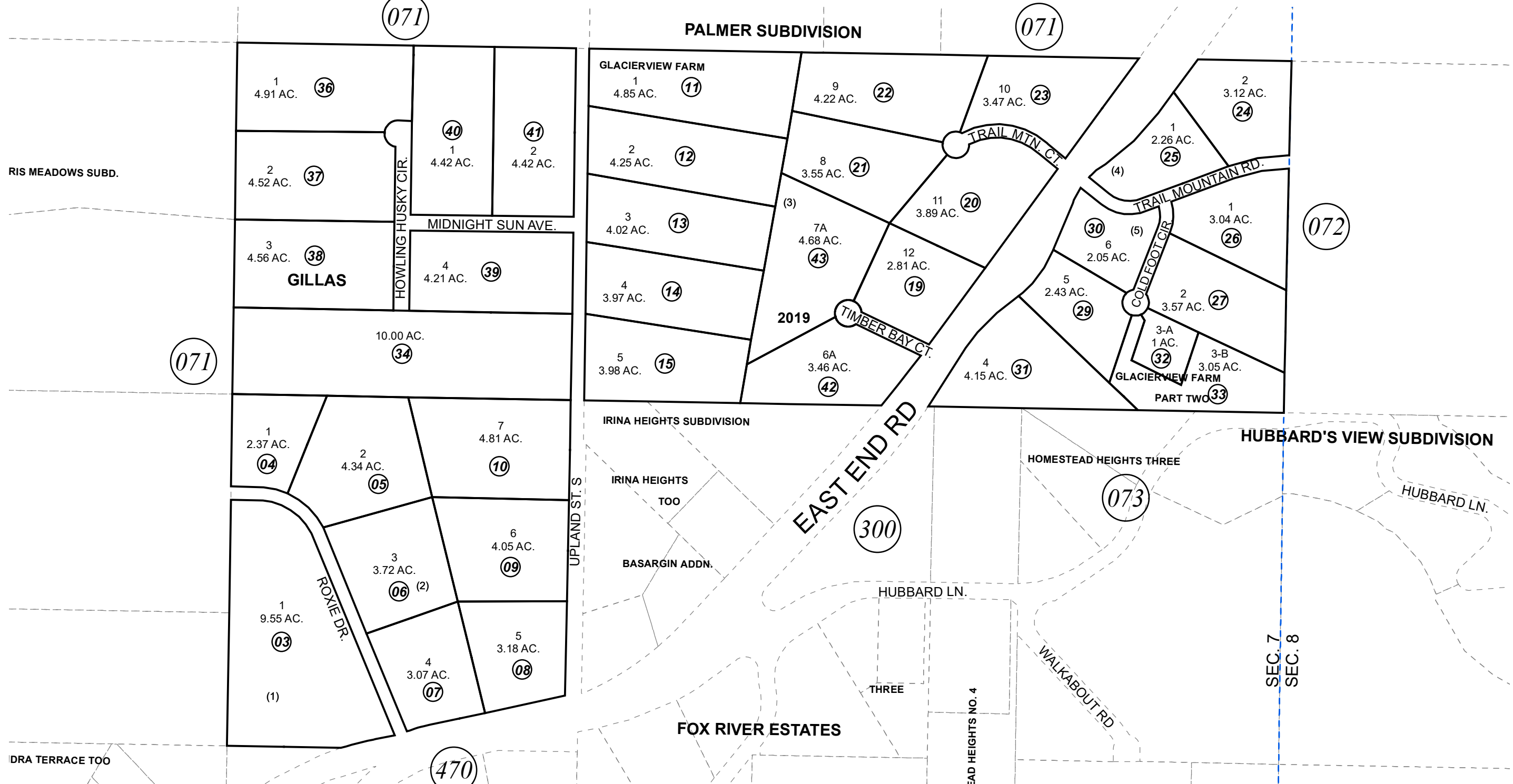


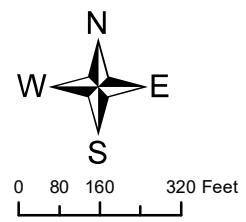
S 1/2 NE1/4, SE1/4 NW 1/4, NE1/4 SW1/4 SEC. 7, T05S, R11W, S.M.

172-290



DECEMBER 6, 2019

For 2020 assessment roll		
Delete	Add	Revise
	To	
16-18	42,43	



Assessor's Map
Kenai Peninsula Borough

- HM0790016 GLACIERVIEW FARM
- HM0800007 GLACIERVIEW FARM PART 2
- HM0810045 GILLAS SUB
- HM0810068 SPAHR SUB
- HM2019037 GLACIERVIEW FARM 2019

Note- Assessor's block Numbers Shown in Ellipses
Assessor's Parcel Numbers Shown in Circles

This map is prepared for Kenai Peninsula Borough Assessing Dept. use only and is not intended for conveyance nor is it a survey.