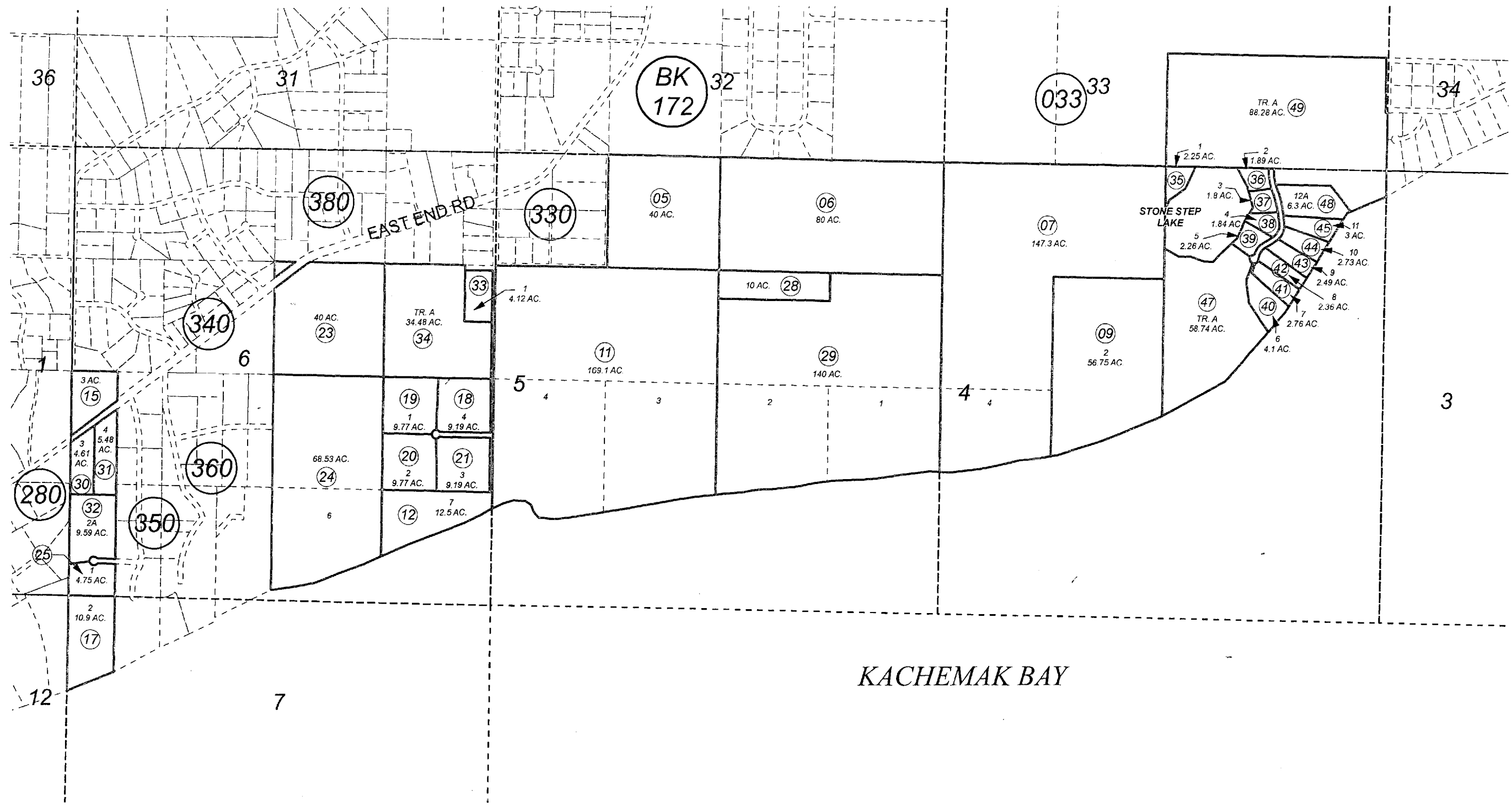


POR. SEC. 4-7, T06S, R12W, S.M.

174-320



DECEMBER 16, 2010

For 2010 assessment roll		
Delete	Add	Revise
To		
48,49		

Assessor's Map  
Kenai Peninsula Borough

GLEN ERIN SUB HM0880028  
 GREENLANDS SUB NO 1 HM0940038  
 GREENLANDS NO 2 HM0980084  
 PATCH SUB HM2007046  
 STONE STEP HM2007085  
 STONE STEP NO 2 HM2009016

This map is prepared for Kenai Peninsula Borough Assessing Dept. use only and is not intended for conveyance nor is it a survey.

Note- Assessor's block Numbers Shown in Ellipses  
 Assessor's Parcel Numbers Shown in Circles