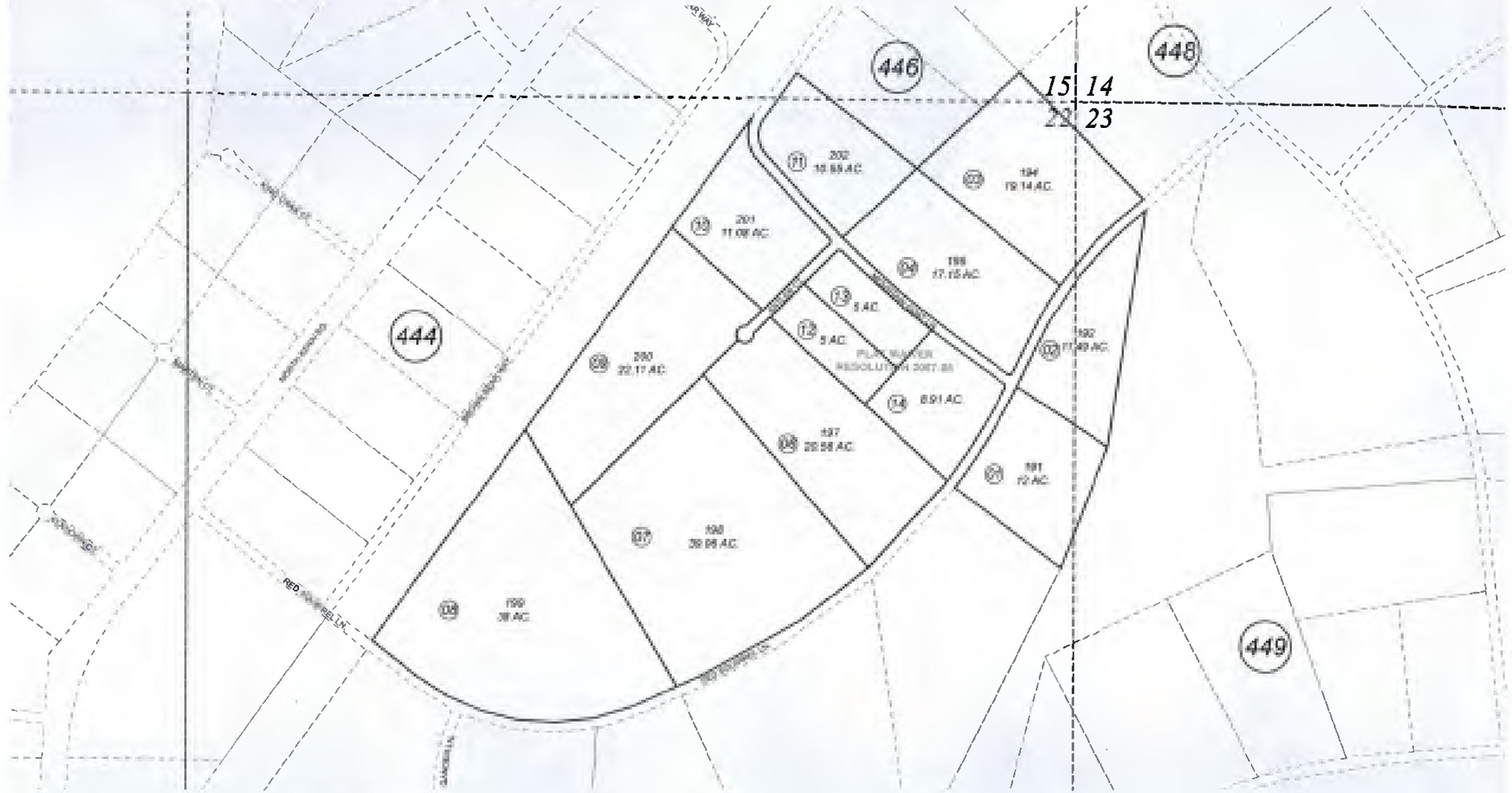


POR. SEC. 22 & 23, T10N, R08W, S.M.

025-445



JULY 19, 2007

For 2008 assessment roll

Delete	Add	Revise
	To	
5	12-14	



Assessor's Map  
Kenai Peninsula Borough

MOOSE POINT SUB KN0840065  
PLAT WAIVER RESOLUTION 2007-08 KN2007-002933-0

Note- Assessor's block Numbers Shown in Ellipses  
Assessor's Parcel Numbers Shown in Circles

This map is prepared  
for Kenai Peninsula  
Borough Assessing Dept.  
use only and is not  
intended for conveyance  
nor is it a survey.