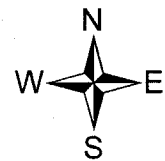
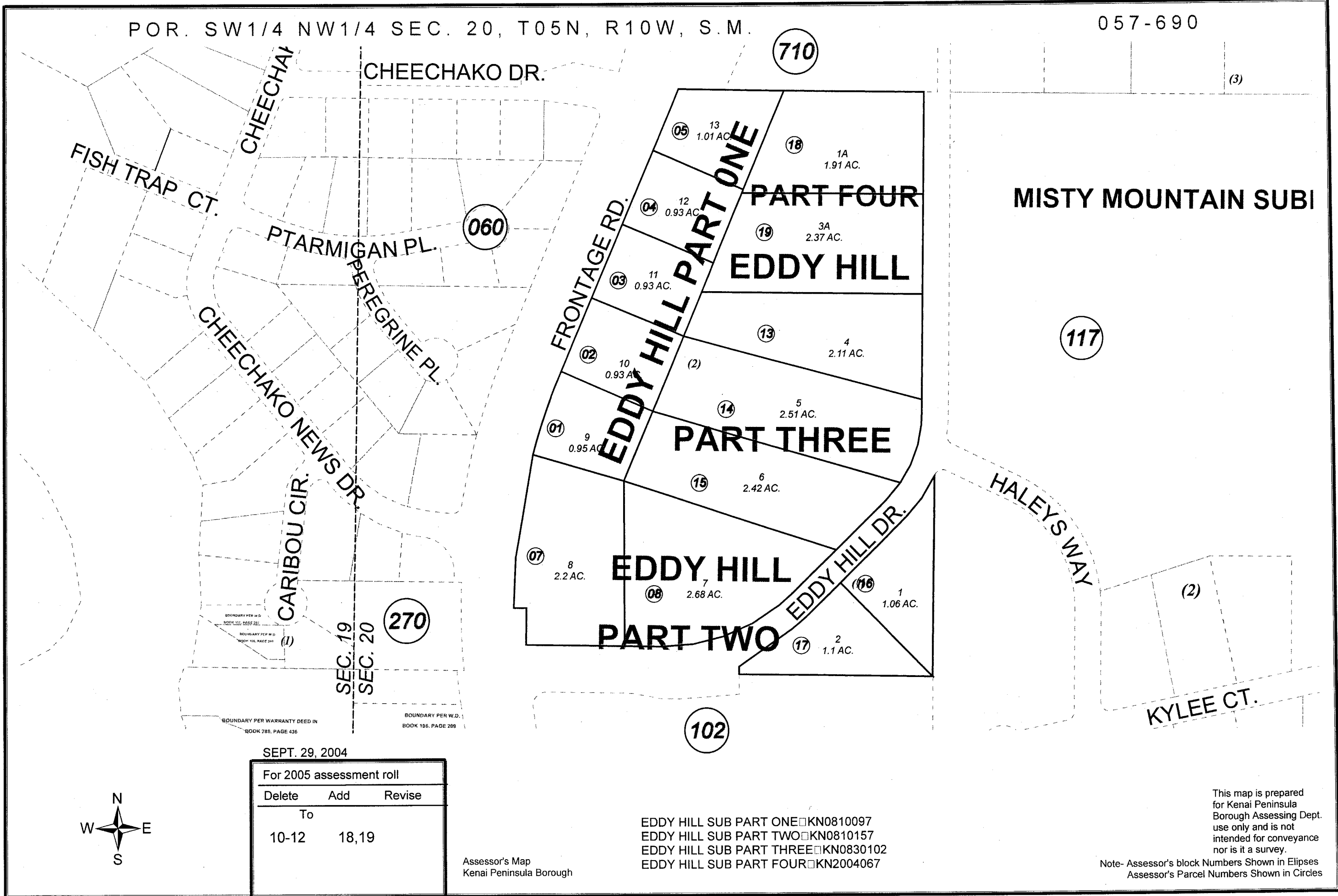


POR. SW1/4 NW1/4 SEC. 20, T05N, R10W, S.M.

057-690



SEPT. 29, 2004

| For 2005 assessment roll | | |
|--------------------------|-------|--------|
| Delete | Add | Revise |
| To | | |
| 10-12 | 18,19 | |

Assessor's Map
Kenai Peninsula Borough

EDDY HILL SUB PART ONE □ KN0810097
 EDDY HILL SUB PART TWO □ KN0810157
 EDDY HILL SUB PART THREE □ KN0830102
 EDDY HILL SUB PART FOUR □ KN2004067

This map is prepared for Kenai Peninsula Borough Assessing Dept. use only and is not intended for conveyance nor is it a survey.

Note- Assessor's block Numbers Shown in Ellipses
 Assessor's Parcel Numbers Shown in Circles