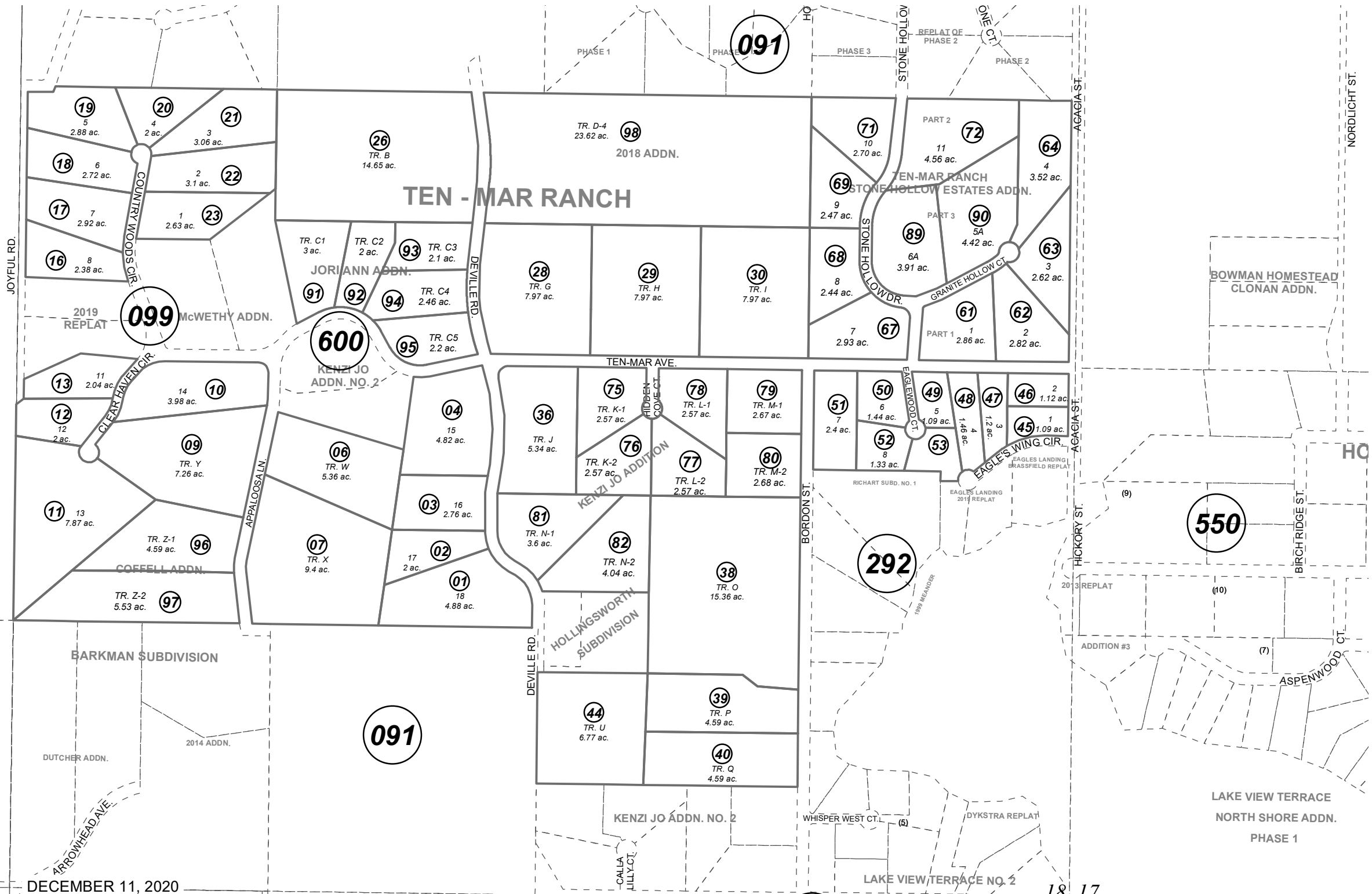


ON 97-21

**BK
058**

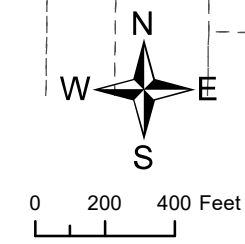


DECEMBER 11, 2020

For 2021 assessment roll		
Delete	Add	Revise
To		
56,57	063-292+	

- TEN - MAR RANCH KN2000051
- EAGLES LANDING KN2000012
- TEN - MAR RANCH BOWSER ADDN KN2004115
- TEN - MAR RANCH STONE HOLLOW ESTATES ADDN PART 1 KN2005036
- TEN - MAR RANCH STONE HOLLOW ESTATES ADDN PART 2 KN2006021
- TEN - MAR RANCH SUB KENZI JO ADDN KN2006081
- TEN - MAR RANCH STONE HOLLOW ESTATES ADDN PART 3 KN2006128
- TEN-MAR RANCH SUB JORI ANN ADDN KN2008011
- TEN-MAR RANCH COFFELL ADDN KN2015013
- TEN - MAR RANCH SUB 2018 ADDN KN2018024

Assessor's Map
Kenai Peninsula Borough



This map is prepared for Kenai Peninsula Borough Assessing Dept. use only and is not intended for conveyance nor is it a survey.
Note- Assessor's block Numbers Shown in Ellipses
Assessor's Parcel Numbers Shown in Circles