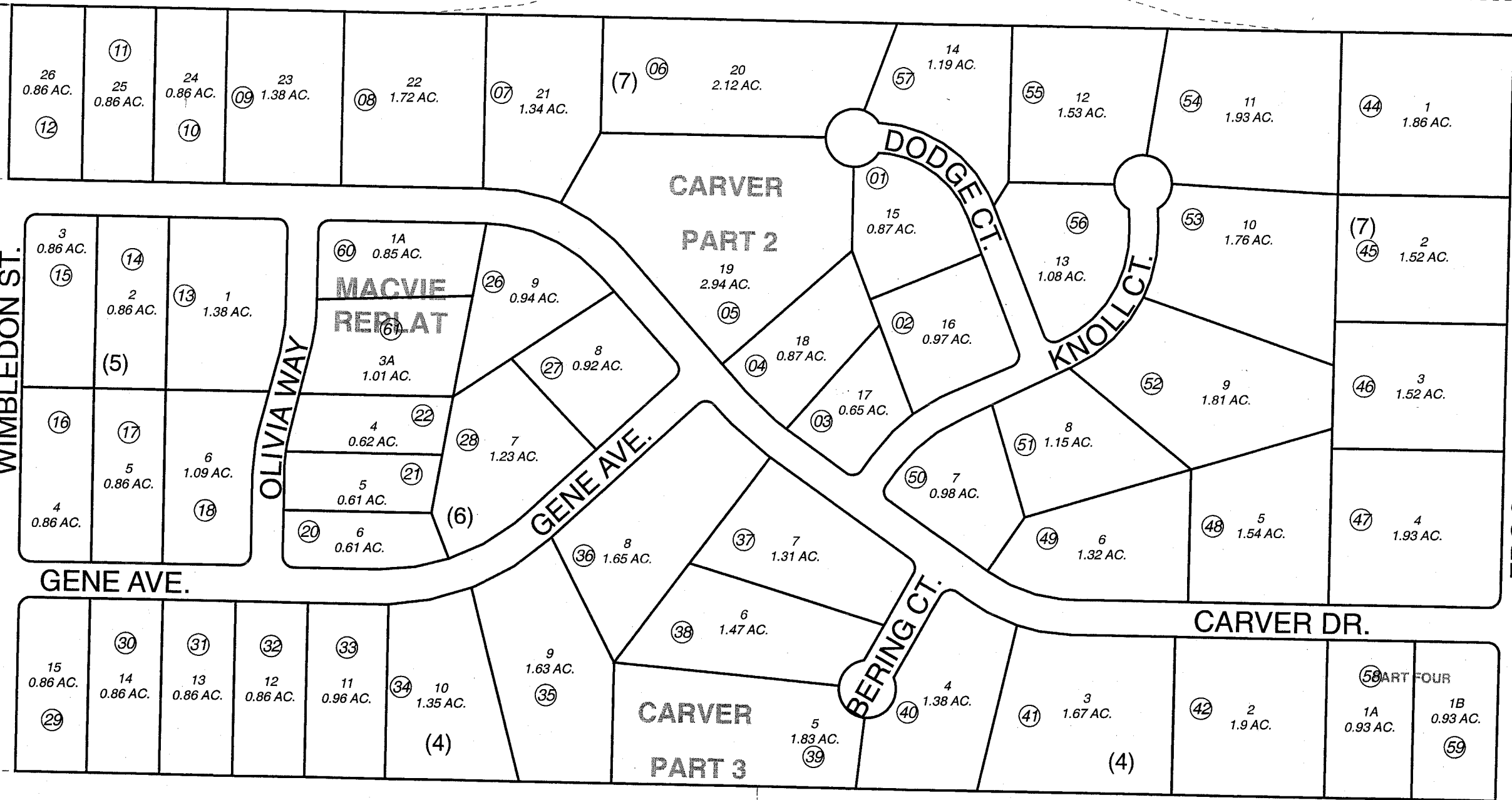


N1/2 NE1/4 SEC. 5, T05N, R10W, S.M.

BK
025

057-360

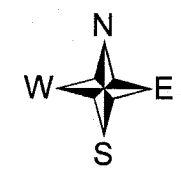
AVE.



260

361

010



OCTOBER 12, 2006

For 2007 assessment roll		
Delete	Add	Revise
To		
23-25	60,61	

Assessor's Map
Kenai Peninsula Borough

CARVER SUB PT 2 □ KN0720017
 CARVER SUB PT 3 □ KN0770073
 CARVER SUB PT 4 □ KN0970103
 CARVER SUB MCVIE REPLAT □ KN2006074

This map is prepared for Kenai Peninsula Borough Assessing Dept. use only and is not intended for conveyance nor is it a survey.
 Note- Assessor's block Numbers Shown in Ellipses
 Assessor's Parcel Numbers Shown in Circles