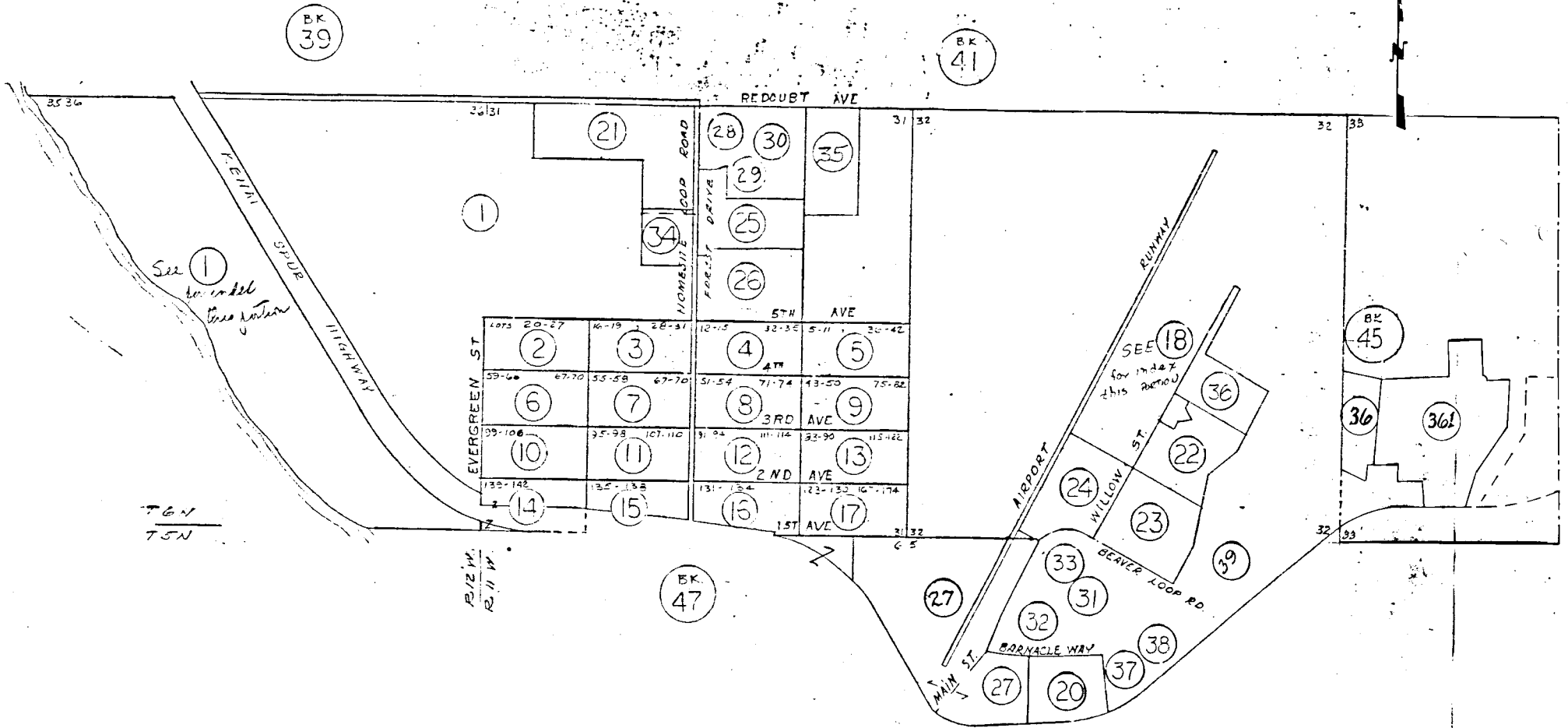


POB. SEC. 5, 6, T5N, R12W, SEC. 31, 32, T6N, R11W, SEC. 35, 36, T6N, R12W. S.B.&M.



INDEX  
BOOK 43  
Assessor's Map  
Kenai Peninsula Borough, Alaska

NOTE - Assessor's Block Numbers Shown in Ellipses  
Assessor's Parcel Numbers Shown in Circles