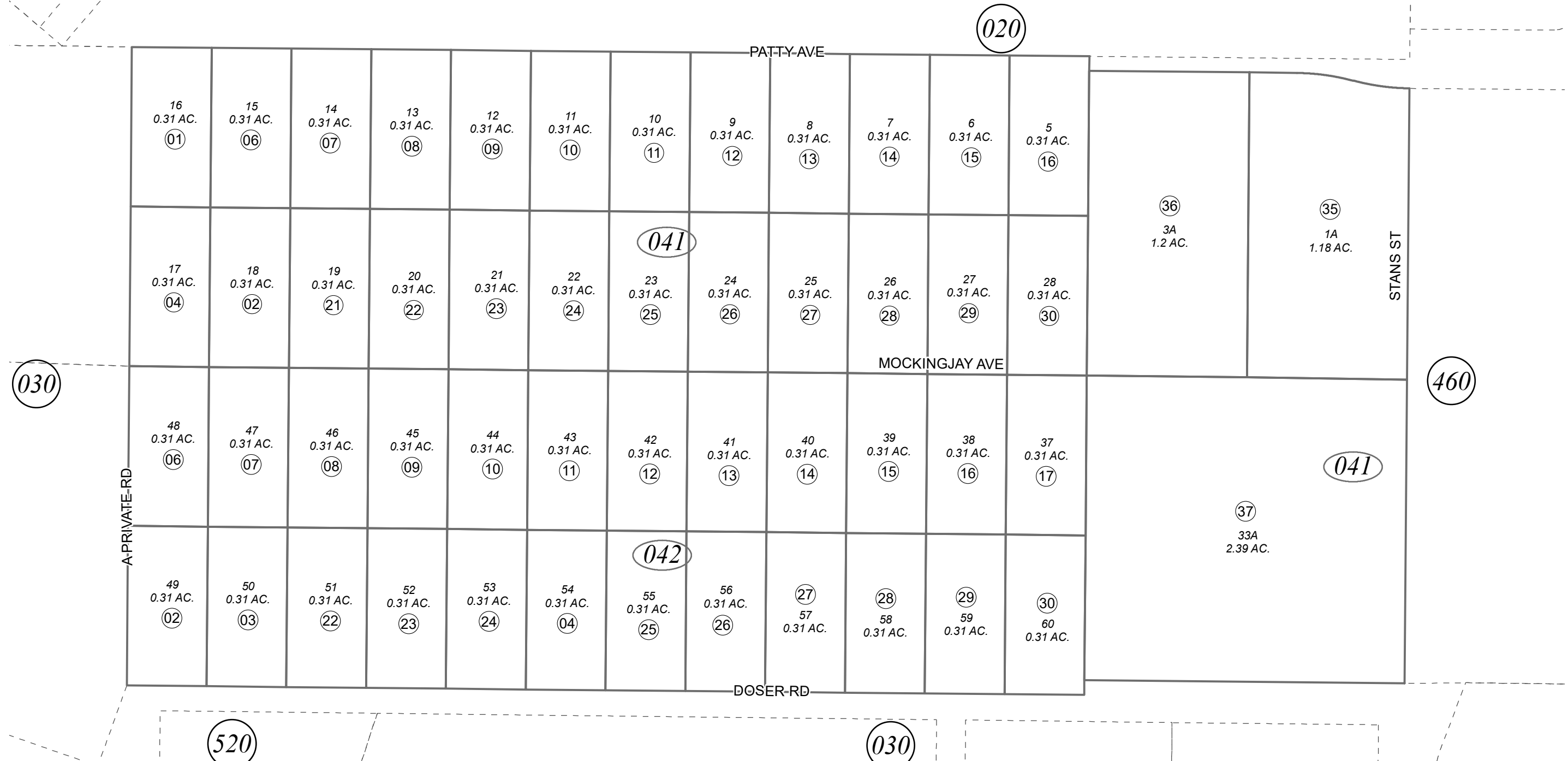


POR. SEC. 7, T05N, R08W, S.M.

065-040



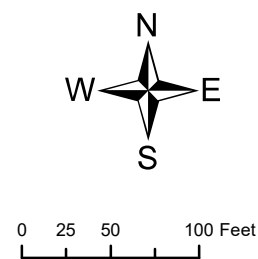
AUGUST 14, 2023

For 2024 assessment roll
Revise
041-01,02,04,06-16,21-30; 042-02,03,04,08-17,22-30 (CORRECTED ACREAGE)

Assessor's Map
Kenai Peninsula Borough

GATTEN SUB KN0000995
GATTEN SUB MILLS REPLAT KN2009082
RECORD OF SURVEY (LOT 47 & 48) KN2012059

Note- Assessor's block Numbers Shown in Ellipses
Assessor's Parcel Numbers Shown in Circles



This map is prepared for Kenai Peninsula Borough Assessing Dept. use only and is not intended for conveyance nor is it a survey.