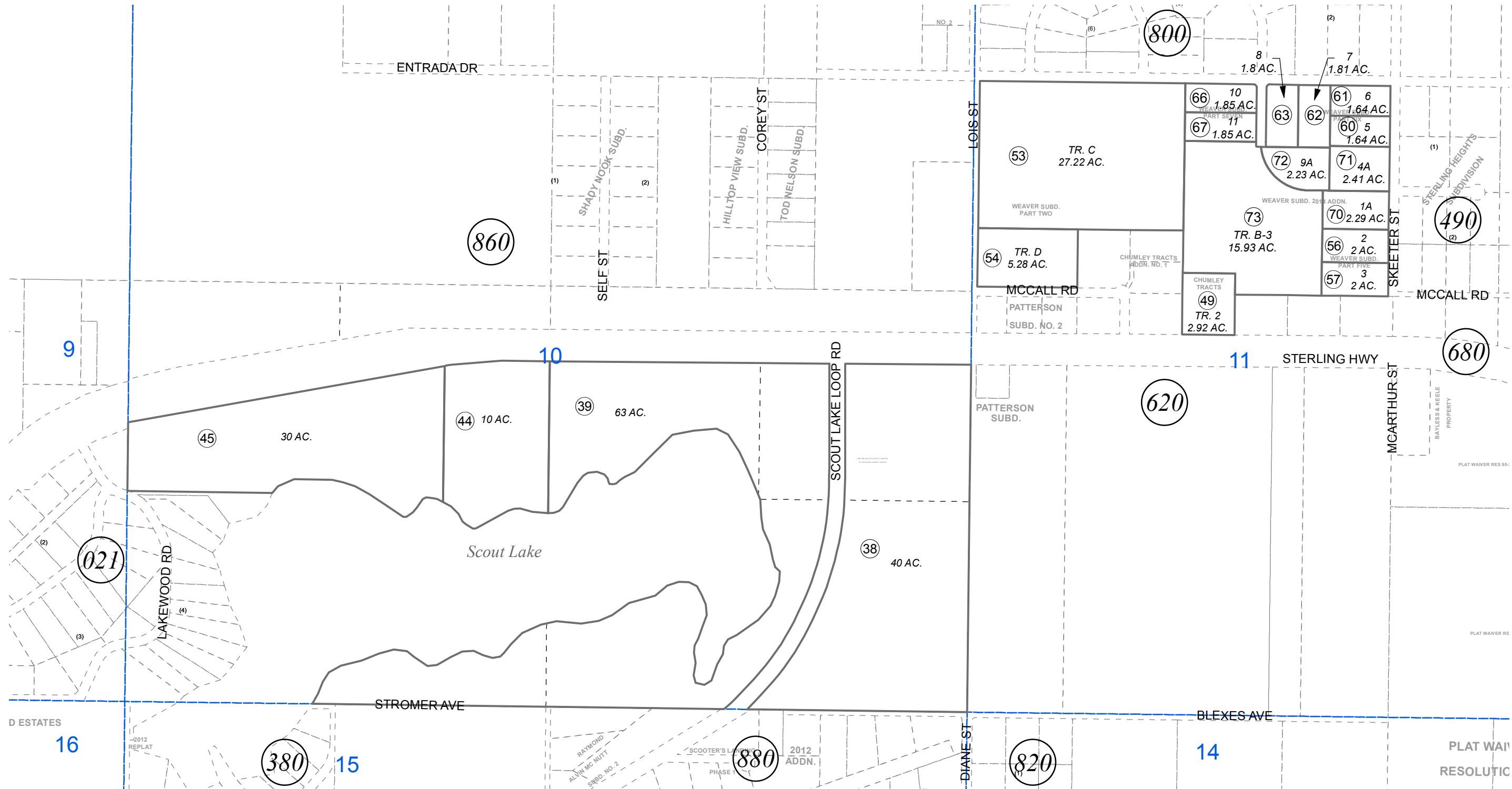


POR. SEC 10 & 11, T05N, R09W, S.M.

063-046



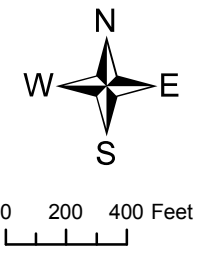
JANUARY 9, 2015

For 2015 assessment roll		
Delete	Add	Revise
To		
55,59, 65,68, 69	70-73	

Assessor's Map  
Kenai Peninsula Borough

CHUMLEY TRACTS KN0960076  
 WEAVER SUB PART TWO KN2001018  
 WEAVER SUB PART FOUR (DUPLICATE NAME TO BE AMENDED KN2008047  
 WEAVER SUB PART SIX KN2008139  
 WEAVER SUB PART SEVEN KN2012077  
 WEAVER SUB 2014 ADDN AND VACATION OF PORTION OF TWIN ROAD KN2014097

Note- Assessor's block Numbers Shown in Ellipses  
 Assessor's Parcel Numbers Shown in Circles



This map is prepared for Kenai Peninsula Borough Assessing Dept. use only and is not intended for conveyance nor is it a survey.