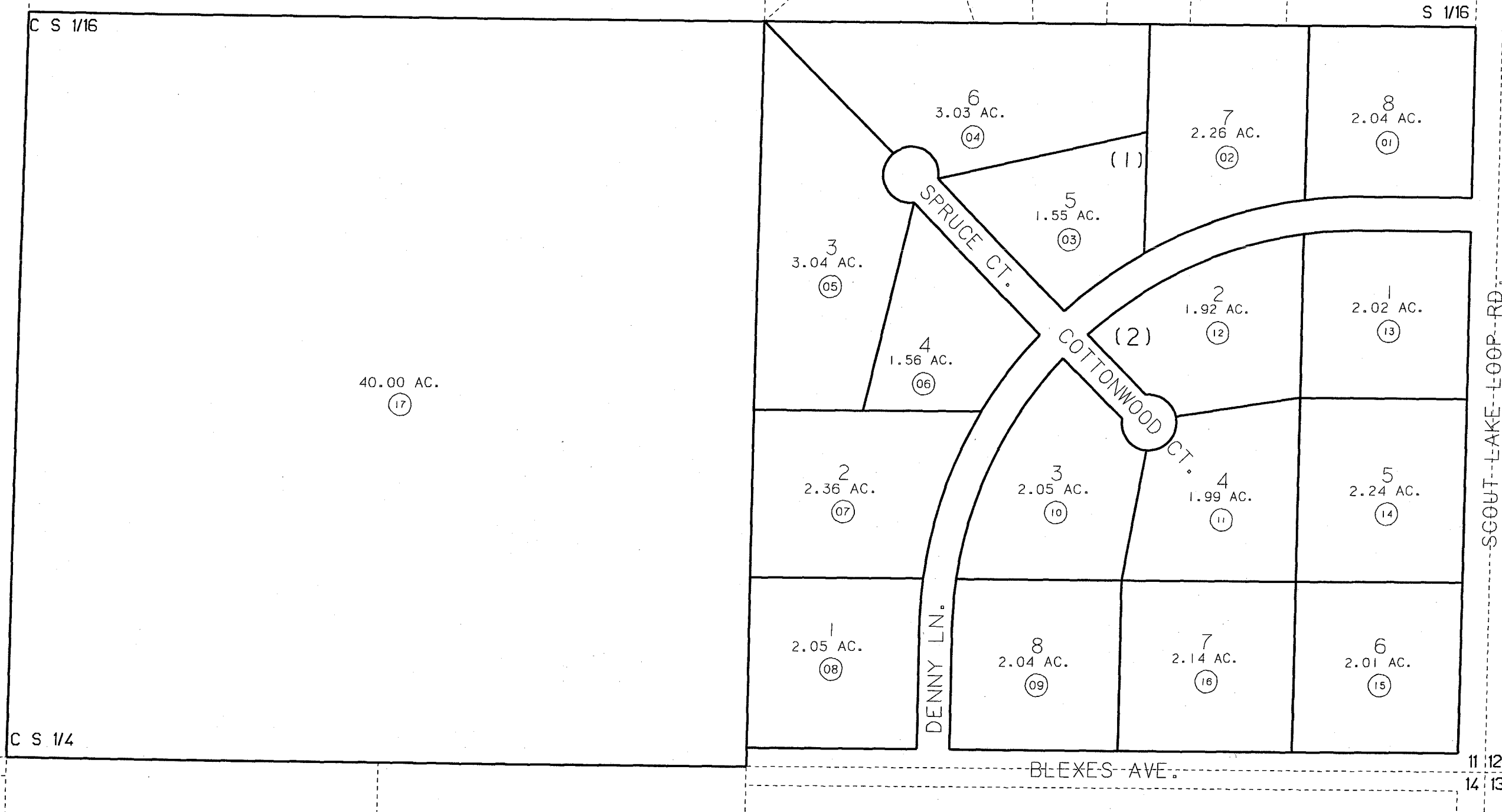


S1/2 SW1/4 SEC. 11, T5N, R9W, SEWARD MERIDIAN

063-640

68



62

77

14

DATE: JAN. 20, 1994

FOR 1994 ASSESSMENT ROLL		
DELETE	ADD	REVISED
TO		
06304646	06364017	

COTTONWOOD-SPRUCE KN780107

NOTE - Assessor's Block Numbers Shown In Ellipses  
Assessor's Parcel Numbers Shown In Circles

Assessor's Map  
Kenai Peninsula Borough

THIS MAP IS PREPARED FOR KENAI PENINSULA BOROUGH ASSESSING DEPT. USE ONLY AND IS NOT INTENDED FOR ANY OTHER USE OR REPRESENTATION

