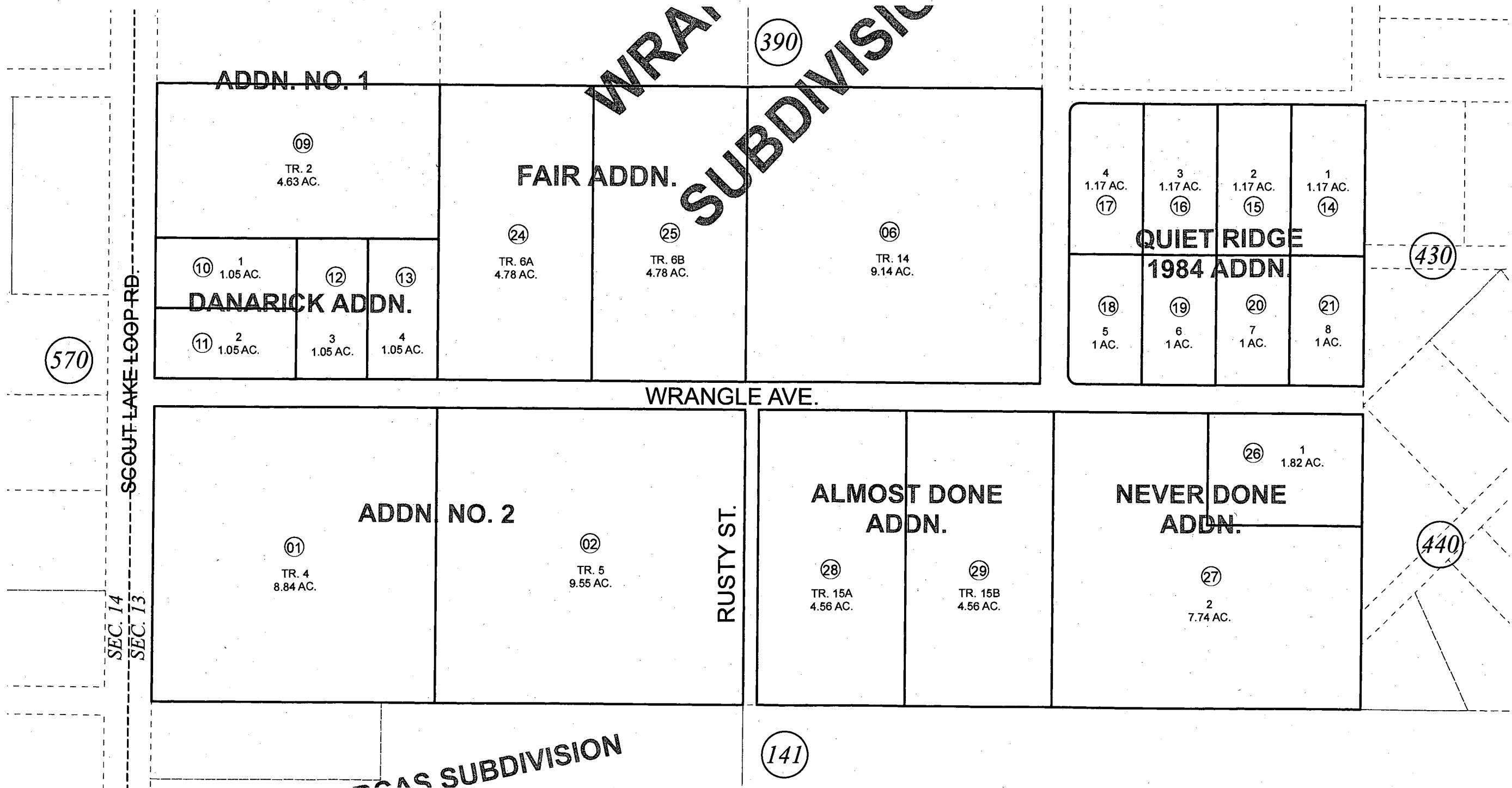


S1/2 NW1/4 SEC. 13, T05N, R09W, S.M.

063-400



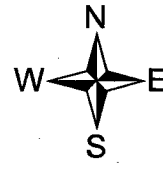
570

390

430

440

141



DECEMBER 21, 2012

For 2013 assessment roll		
Delete	Add	Revise
	To	
03	28,29	

Assessor's Map
Kenai Peninsula Borough

- WRANGLE SUB ADDN NO 1 KN0740079
- WRANGLE SUB ADDN NO 2 KN0740112
- WRANGLE SUB-DANARICK ADDN KN0830203
- WRANGLE SUB-QUIET RIDGE 1984 ADDN KN0840052
- WRANGLE SUB FAIR ADDN KN0970006
- WRANGLE SUB NEVER DONE ADDN KN0990085
- WRANGLE SUB ALMOST DONE ADDN KN2012091

This map is prepared for Kenai Peninsula Borough Assessing Dept. use only and is not intended for conveyance nor is it a survey.

Note- Assessor's block Numbers Shown in Elipses
Assessor's Parcel Numbers Shown in Circles