

BK 059

300

03
40 ac.

04
23.52 ac.

344

343

400

430

310

330

390

380

GOVT LOT 5
0.22 ac.

GOVT LOT 8
0.4 ac.

GOVT LOT 10
0.14 ac.

19
1A
8.11 ac.

21
TR. A1A
52.33 ac.

BK 135

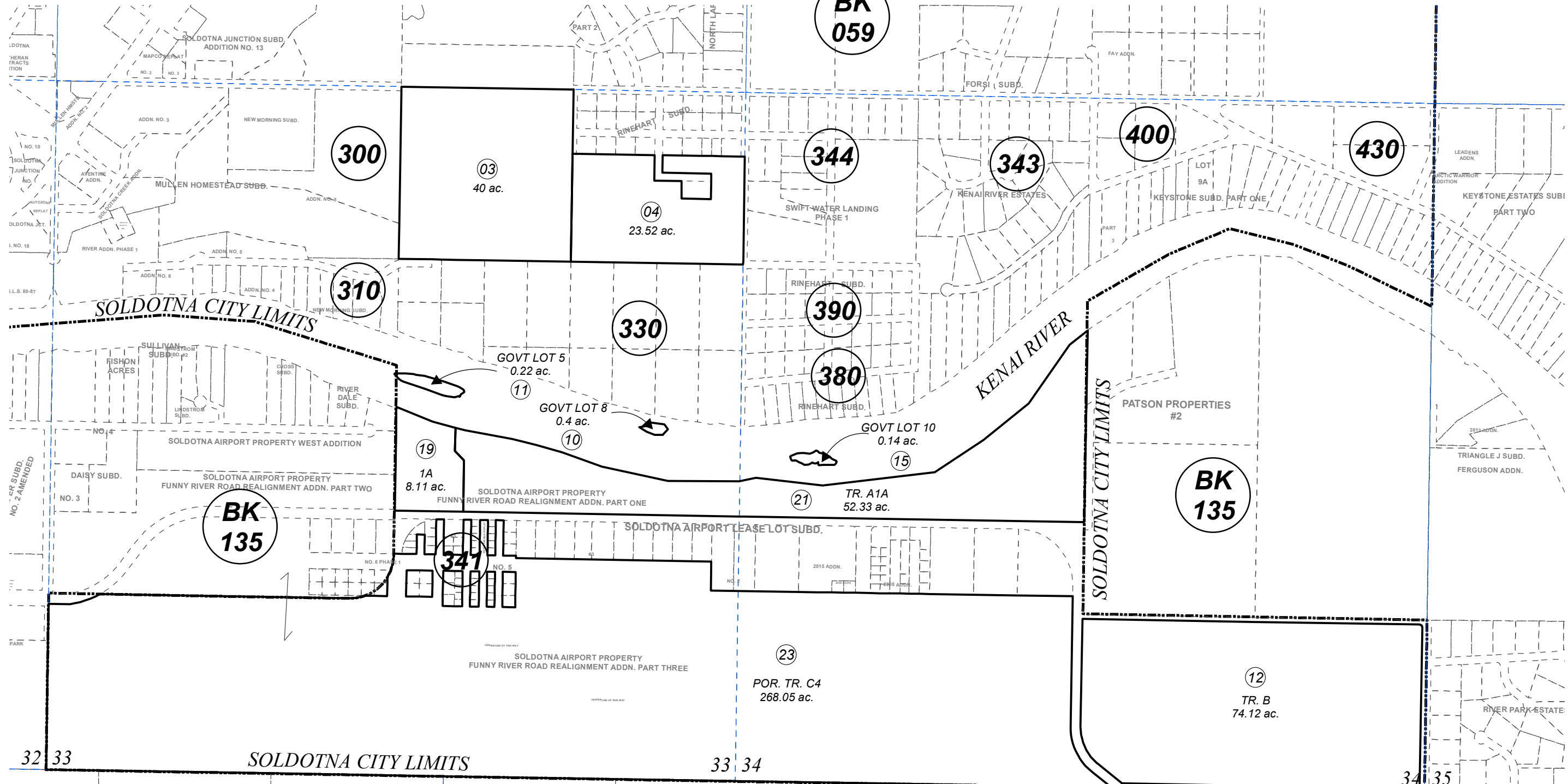
341

BK 135

23
POR. TR. C4
268.05 ac.

12
TR. B
74.12 ac.

BK 135



0 250 500 1,000 Feet

MAY 6, 2016

For 2017 assessment roll		
Delete	Add	Revise
To		
13,14	060344+	

Assessor's Map
Kenai Peninsula Borough

- SOLDOTNA AIRPORT PROPERTY SUB KN0870074
- SOLDOTNA AIRPORT LEASE LOT SUB KN0870088
- SOLDOTNA AIRPORT KENAI RIVER CENTER KN0990038
- SOLDOTNA AIRPORT LEASE LOT SUB NO 4 KN2003080
- SOLDOTNA AIRPORT LEASE LOT SUB NO 5 KN2004055
- SOLDOTNA AIRPORT PROPERTY FUNNY RIVER ROAD REALIGNMENT ADDN PART ONE KN2011022
- SOLDOTNA AIRPORT PROPERTY FUNNY RIVER ROAD REALIGNMENT ADDN PART THREE KN2015001

This map is prepared for Kenai Peninsula Borough Assessing Dept. use only and is not intended for conveyance nor is it a survey.
Note- Assessor's block Numbers Shown in Ellipses
Assessor's Parcel Numbers Shown in Circles