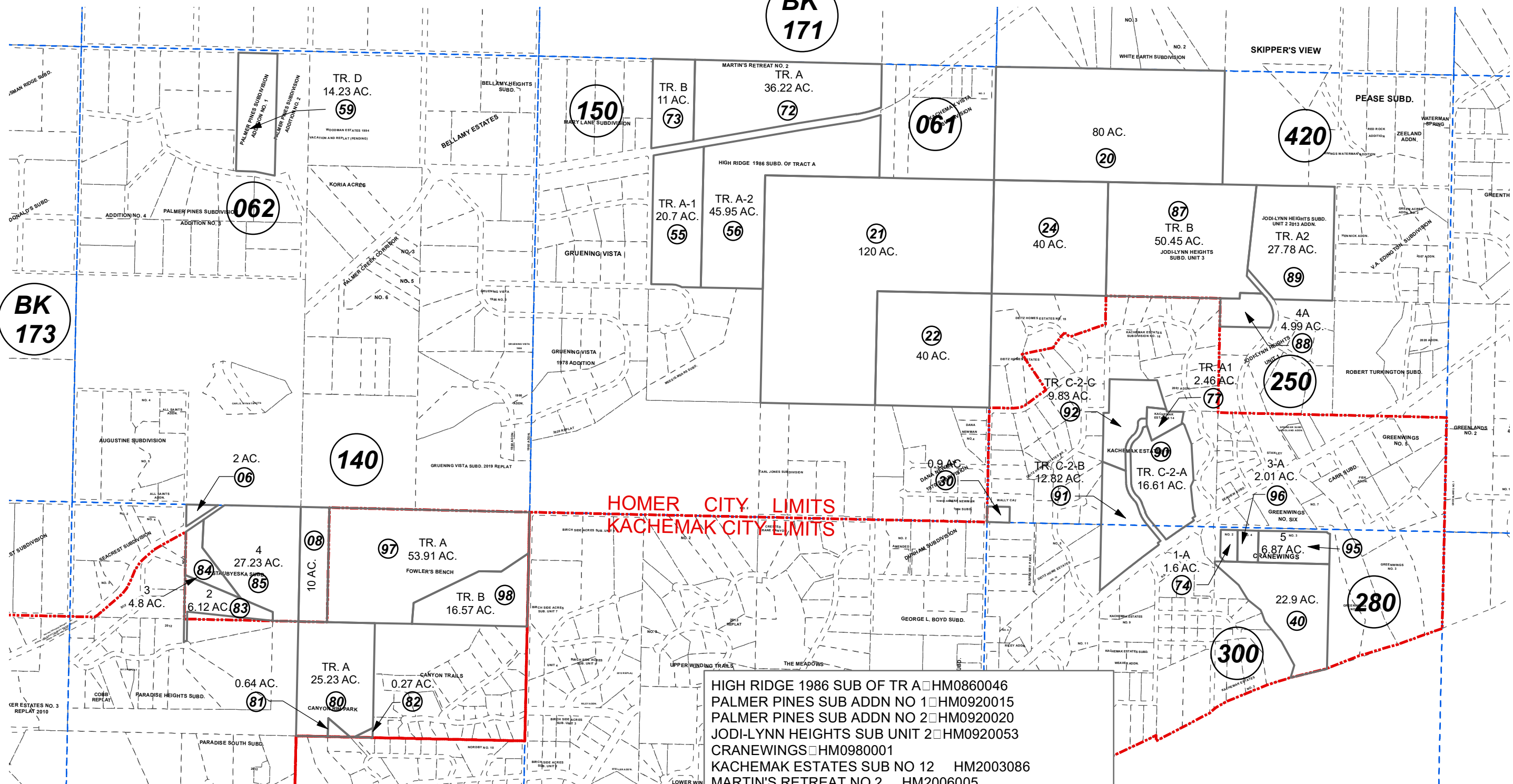


**BK**  
**171**

**BK**  
**173**



- HIGH RIDGE 1986 SUB OF TR A □ HM0860046
- PALMER PINES SUB ADDN NO 1 □ HM0920015
- PALMER PINES SUB ADDN NO 2 □ HM0920020
- JODI-LYNN HEIGHTS SUB UNIT 2 □ HM0920053
- CRANEWINGS □ HM0980001
- KACHEMAK ESTATES SUB NO 12 HM2003086
- MARTIN'S RETREAT NO 2 HM2006005
- CRANEWINGS NO. 2 HM2006089
- KACHEMAK ESTATES 14 HM2006102
- CRANEWINGS NO 4 HM2020029
- CANYON RIM PARK SUB HM2007061
- STAUBYESKA SUB HM2009020
- JODI-LYNN HEIGHTS SUB UNIT 3 HM2012050
- JODI-LYNN HEIGHTS SUB UNIT 2 2013 ADDN HM2013019
- KACHEMAK ESTATES 15 HM2016030
- CRANEWINGS NO. 3 HM2018031
- FOWLER'S BENCH HM2021061

JANUARY 5, 2022

For 2022 assessment roll		
Delete	Add	Revise
To		
11	97,98	



0 250 500 1,000 Feet

Assessor's Map  
Kenai Peninsula Borough

This map is prepared for Kenai Peninsula Borough Assessing Dept. use only and is not intended for conveyance nor is it a survey.  
Note- Assessor's block Numbers Shown in Ellipses  
Assessor's Parcel Numbers Shown in Circles