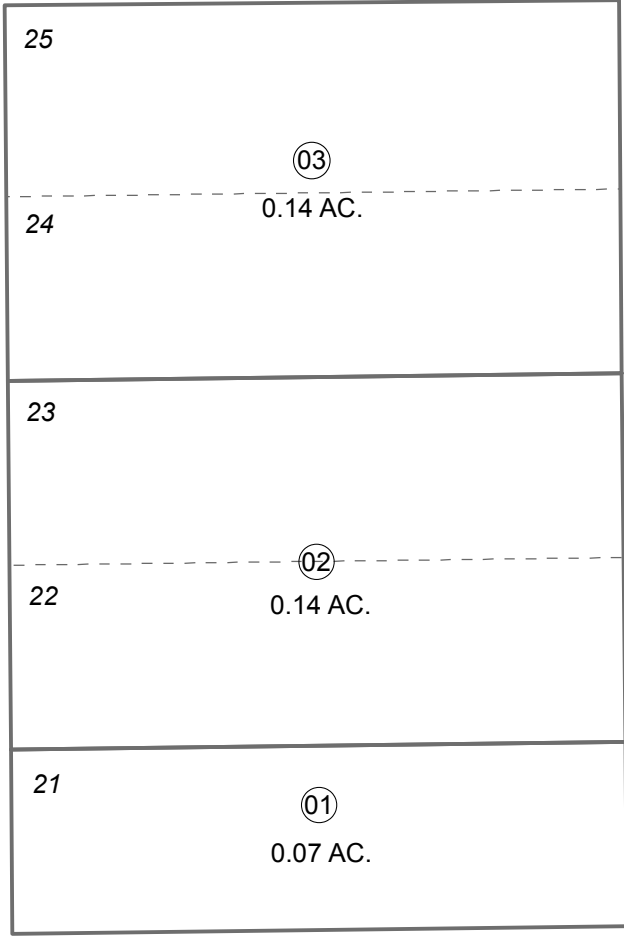


POR. SEC. 3, T01S, R01W, S.M.

147-190

SECOND AVE

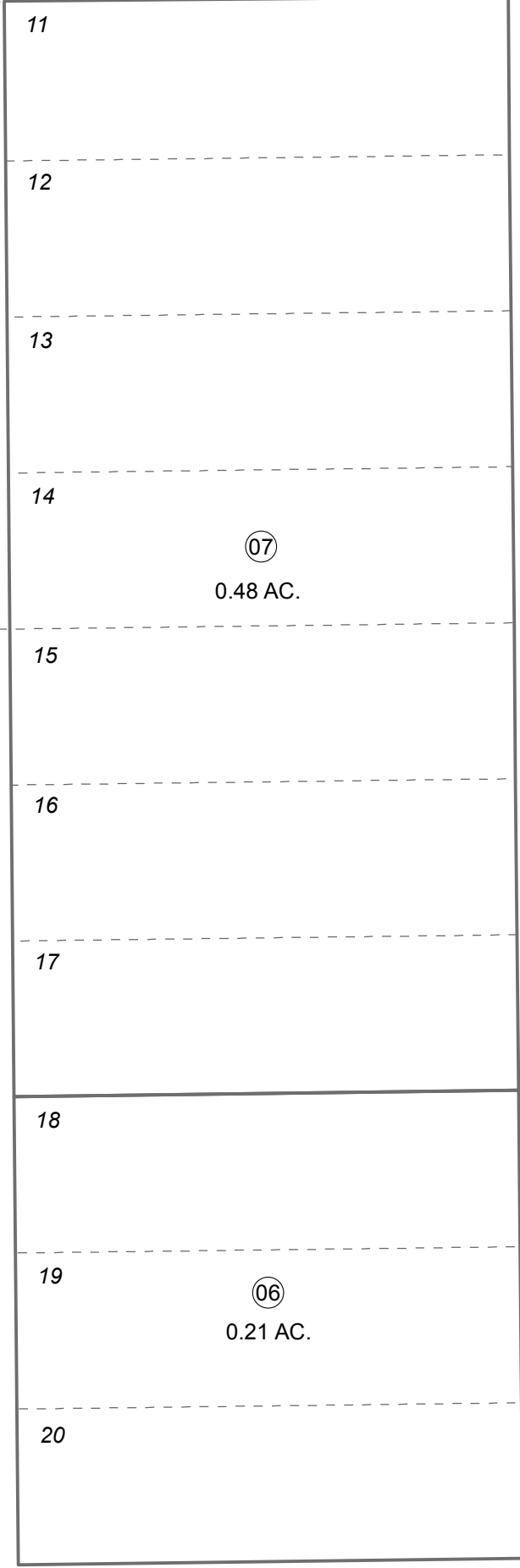


20' ALLEY

170

VAN BUREN ST

330



THIRD AVE

060



0 10 20 Feet

AUGUST 9, 2016

For 2017 assessment roll	
Delete	Add
	To
04,05,08	147-330+

Assessor's Map
Kenai Peninsula Borough

ORIGINAL TOWNSITE OF SEWARD LAUBNER ADDN SW2016003

Note- Assessor's block Numbers Shown in Ellipses
Assessor's Parcel Numbers Shown in Circles

This map is prepared
for Kenai Peninsula
Borough Assessing Dept.
use only and is not
intended for conveyance
nor is it a survey.