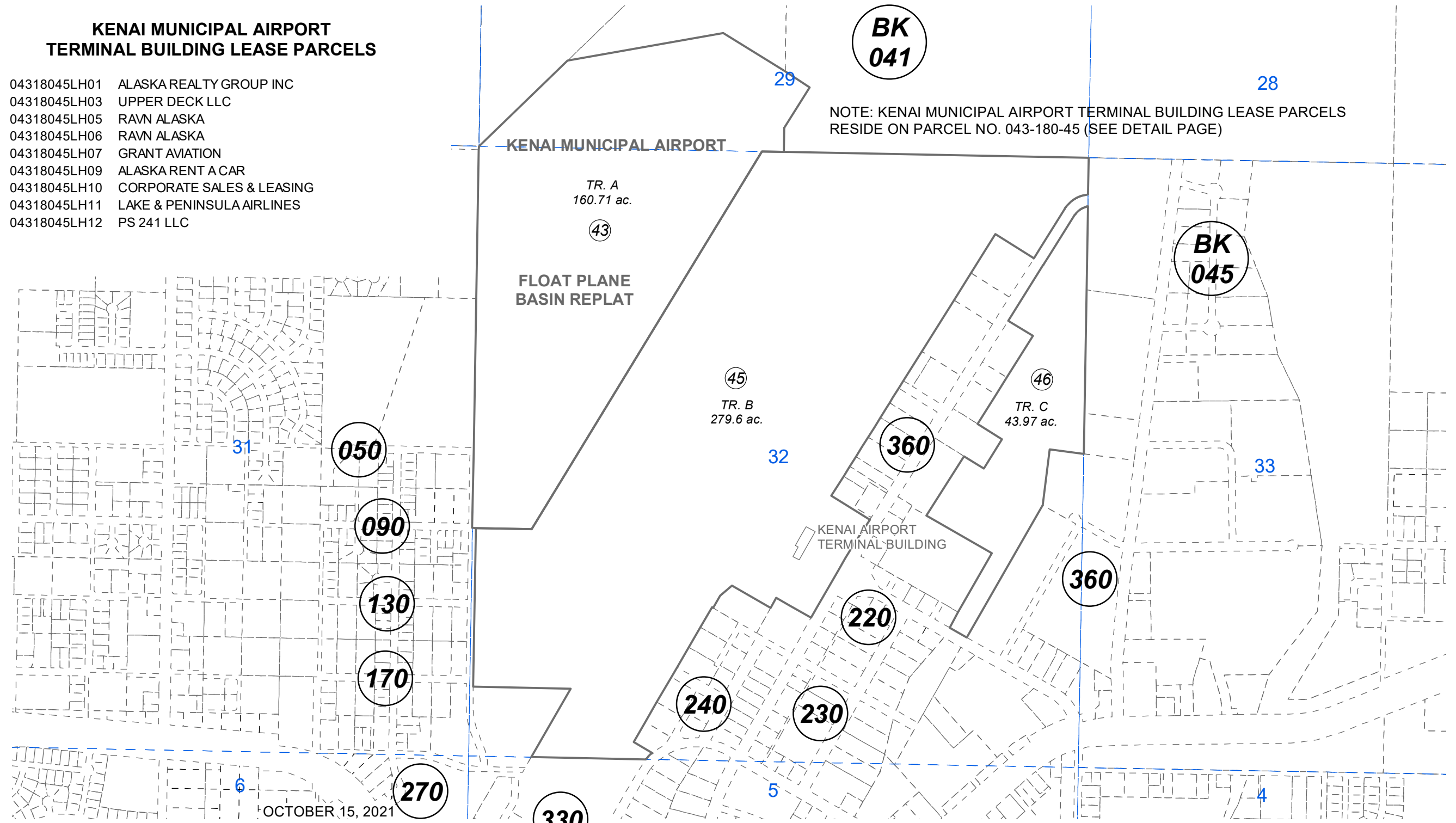


**KENAI MUNICIPAL AIRPORT  
TERMINAL BUILDING LEASE PARCELS**

- 04318045LH01 ALASKA REALTY GROUP INC
- 04318045LH03 UPPER DECK LLC
- 04318045LH05 RAVN ALASKA
- 04318045LH06 RAVN ALASKA
- 04318045LH07 GRANT AVIATION
- 04318045LH09 ALASKA RENT A CAR
- 04318045LH10 CORPORATE SALES & LEASING
- 04318045LH11 LAKE & PENINSULA AIRLINES
- 04318045LH12 PS 241 LLC

**BK 041**

NOTE: KENAI MUNICIPAL AIRPORT TERMINAL BUILDING LEASE PARCELS RESIDE ON PARCEL NO. 043-180-45 (SEE DETAIL PAGE)



OCTOBER 15, 2021



0 500 1,000 Feet

For 2022 assessment roll		
Delete	Add	Revise
To		
44	45,46	LEASE HOLDS
		(TO REFLECT NEW BASE PARCEL ID)

Assessor's Map  
Kenai Peninsula Borough

USS SURVEY 4969  
KENAI MUNICIPAL AIRPORT FLOAT PLANE BASIN REPLAT KN2009020  
FBO SUB NO 10 KN2021058

This map is prepared for Kenai Peninsula Borough Assessing Dept. use only and is not intended for conveyance nor is it a survey.  
Note- Assessor's block Numbers Shown in Elipses  
Assessor's Parcel Numbers Shown in Circles