

BK
041

SUNSET RIM

PART ONE

BIBLE-MYERS
ADDN.

270

ADDITION NO. 2

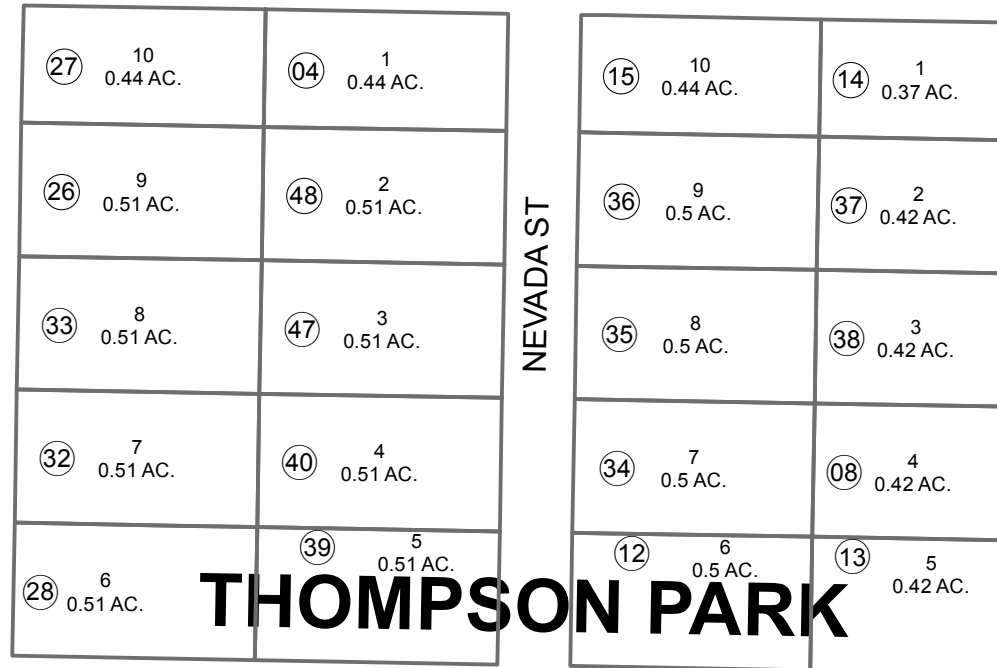
EISENHOWER LN

IOWA ST

TOGIAK ST

3631
116

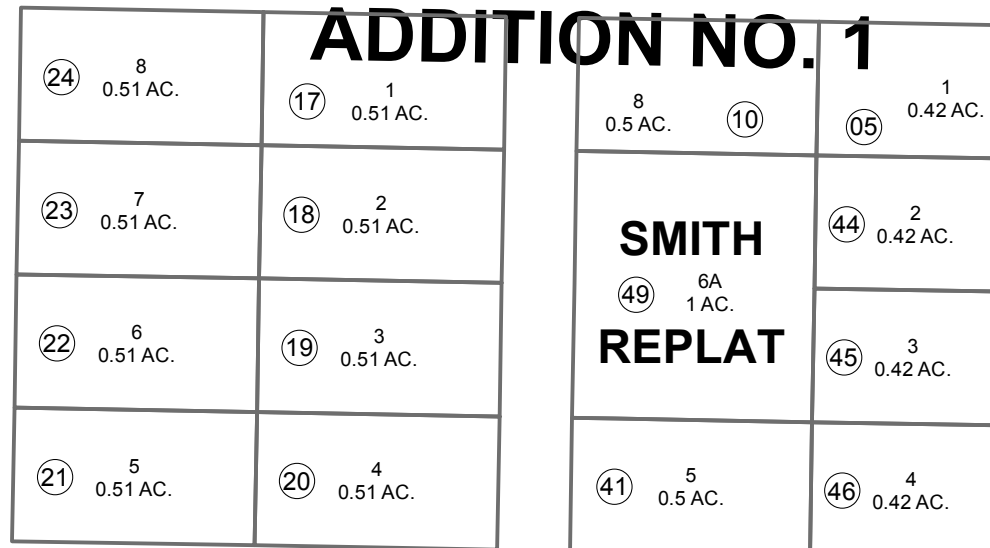
T06N
T05N



THOMPSON PARK

PRIMROSE PL

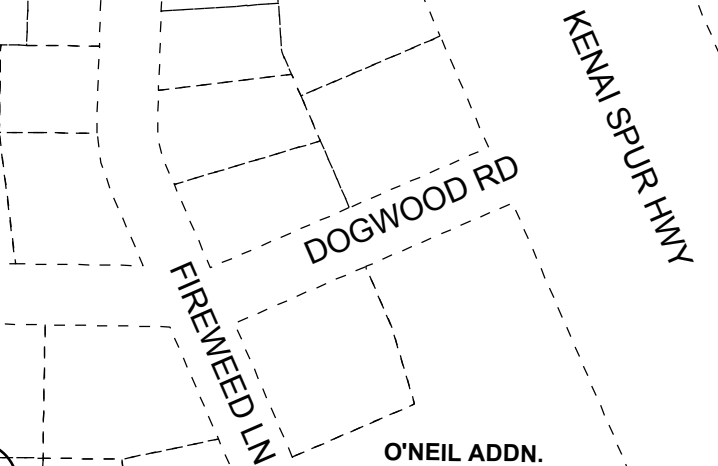
ADDITION NO. 1



SMITH
REPLAT

FERN ST

FORGET ME NOT RD



THOMPSON

WAGONER
ADDN.

PARK

KENAI SPUR HWY

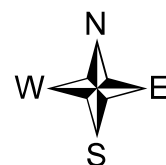
O'NEIL ADDN.

SUBD.

280

JANUARY 28, 2016

For 2016 assessment roll		
Delete	Add	Revise
To		
42,43	49	



0 2550 100 Feet

Assessor's Map
Kenai Peninsula Borough

THOMPSON PARK SUB ADDN NO 1 KN0001422
THOMPSON PARK SMITH REPLAT KN2015065
THOMPSON PARK SMITH REPLAT AMENDED KN2015089

Note- Assessor's block Numbers Shown in Ellipses
Assessor's Parcel Numbers Shown in Circles

This map is prepared
for Kenai Peninsula
Borough Assessing Dept.
use only and is not
intended for conveyance
nor is it a survey.