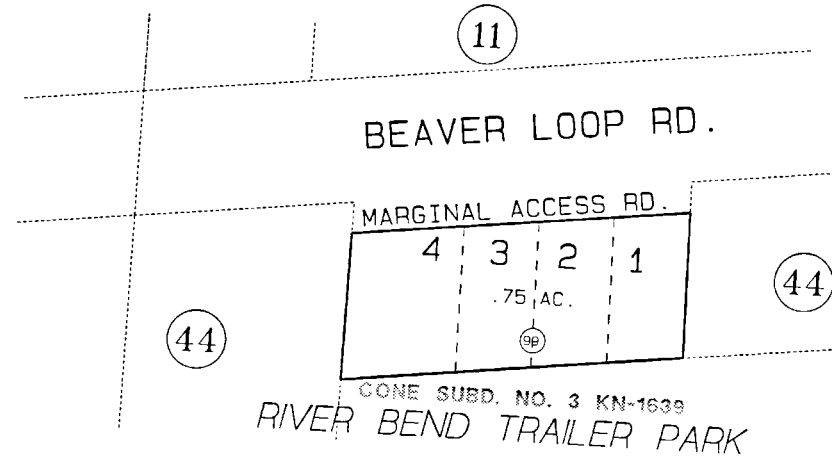


POR. W1/2 NW1/4 SEC. 11, T5N, R11W, SEWARD MERIDIAN

049-441

- 01 SPACE 01
- 02 SPACE 02
- 03 SPACE 03
- 04 SPACE 04
- 05 SPACE 05
- 06 SPACE 06
- 07 SPACE 07
- 08 SPACE 08
- 09 SPACE 09
- 10 SPACE 10
- 11 SPACE 11



DATE: OCT. 2, 1998

FOR 1999 ASSESSMENT ROLL		
DELETE	ADD	REVISED
TO		
11		

Assessor's Map
Kenai Peninsula Borough

THIS MAP IS PREPARED
FOR KENAI PENINSULA
BOROUGH ASSESSING DEPT.
USE ONLY AND IS NOT
INTENDED FOR ANY
OTHER USE OR REPRESENTATION

NOTE - Assessor's Block Numbers Shown In Ellipses
Assessor's Parcel Numbers Shown In Circles