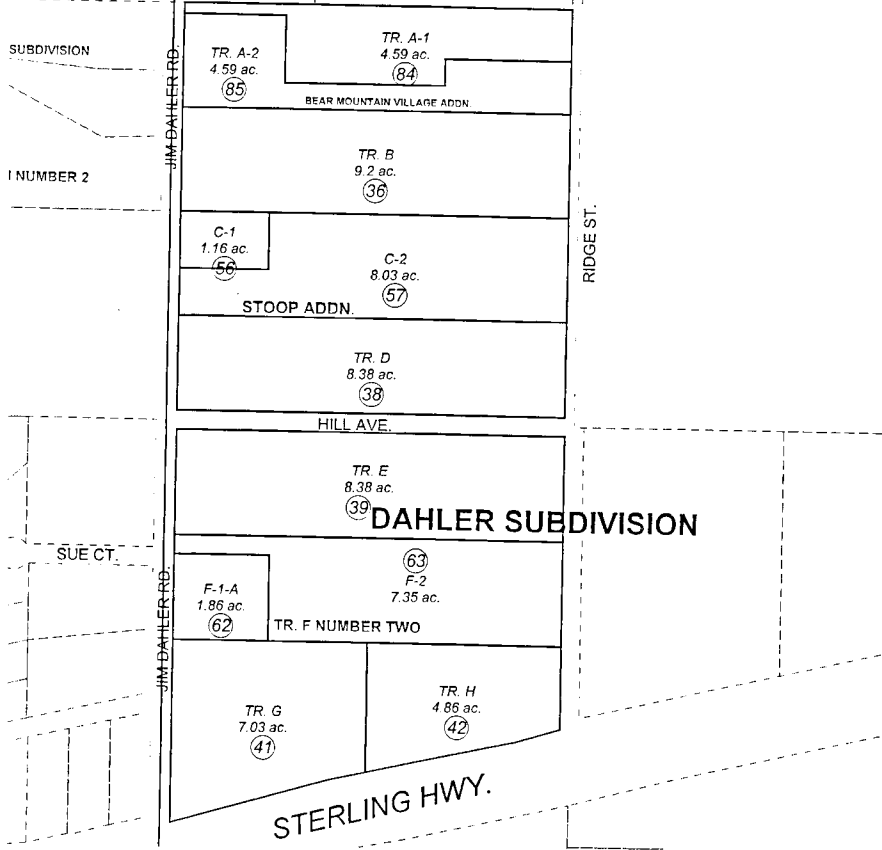


DETAIL A  
1" = 400'



DETAIL B  
1" = 200'



NOVEMBER 4, 2003

For 2004 assessment roll		
Delete	Add	Revise
To		
09105	063096+	

Assessor's Map  
Kenai Peninsula Borough

This map is prepared for Kenai Peninsula Borough Assessing Dept. use only and is not intended for conveyance nor is it a survey.

Note- Assessor's block Numbers Shown in Ellipses  
Assessor's Parcel Numbers Shown in Circles