

SW1/4 SW1/4 SEC. 22, T05N, R10W, S.M.

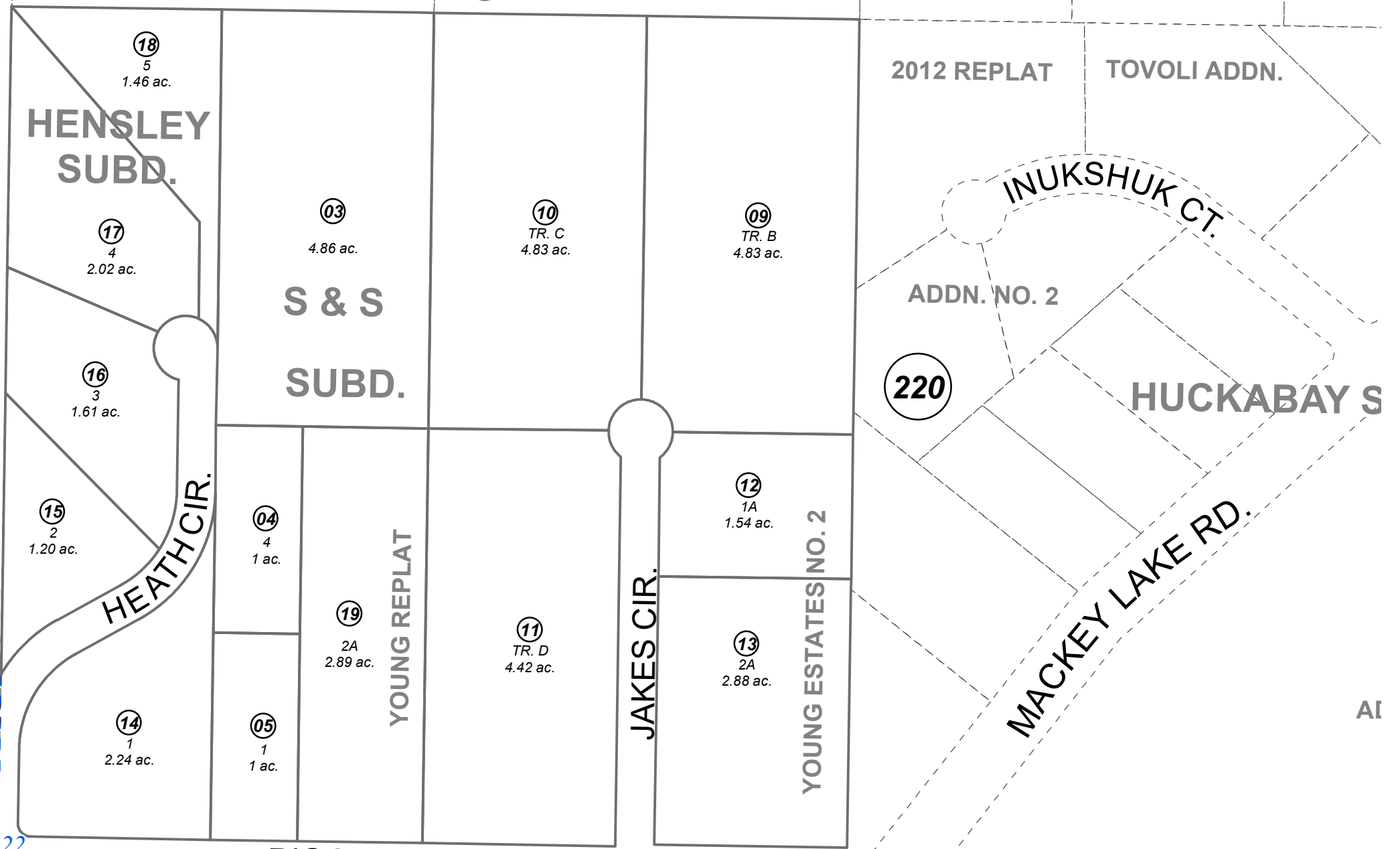
058-033

280

044

220

BK  
059



18  
5  
1.46 ac.

17  
4  
2.02 ac.

16  
3  
1.61 ac.

15  
2  
1.20 ac.

14  
1  
2.24 ac.

03  
4.86 ac.

10  
TR. C  
4.83 ac.

09  
TR. B  
4.83 ac.

04  
4  
1 ac.

19  
2A  
2.89 ac.

05  
1  
1 ac.

11  
TR. D  
4.42 ac.

12  
1A  
1.54 ac.

13  
2A  
2.88 ac.

2012 REPLAT

TOVOLI ADDN.

INUKSHUK CT.

ADDN. NO. 2

HUCKABAY S

MACKEY LAKE RD.

YOUNG ESTATES NO. 2

RIGGS AVE

SOLDOTNA CITY LIMITS

RIGGS AVE



0 50 100 200 Feet

JANUARY 5, 2022

For 2022 assessment roll		
Delete	Add	Revise
To		
01,02	19	

Assessor's Map  
Kenai Peninsula Borough

S & S SUBD KN860112  
 YOUNG ESTATES KN2001039  
 YOUNG ESTATES NO 2 KN2008013  
 HENSLEY SUB KN2015077  
 S&S SUB YOUNG REPLAT KN2021098

This map is prepared for Kenai Peninsula Borough Assessing Dept. use only and is not intended for conveyance nor is it a survey.  
 Note- Assessor's block Numbers Shown in Elipses  
 Assessor's Parcel Numbers Shown in Circles