

091

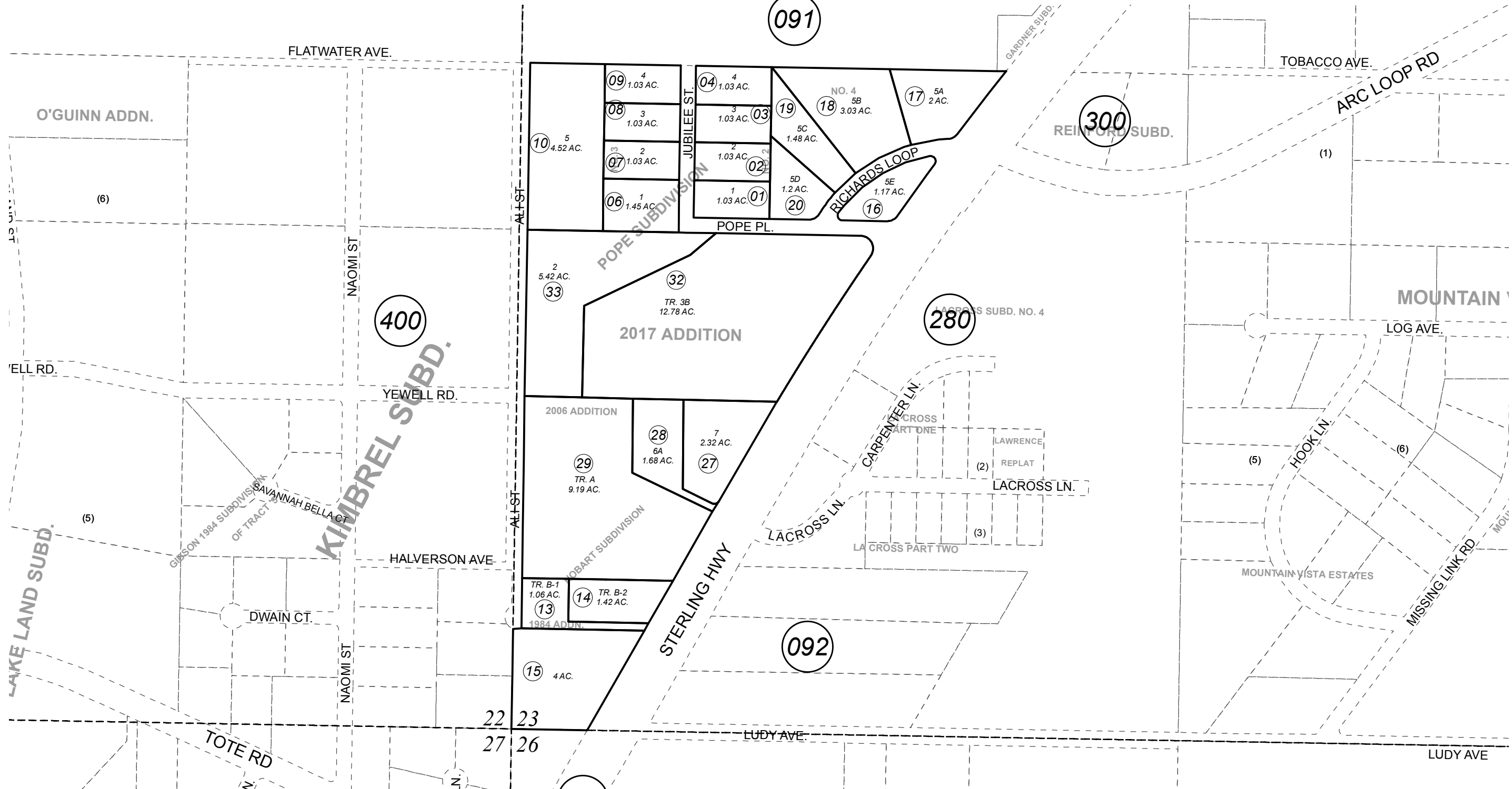
300

400

280

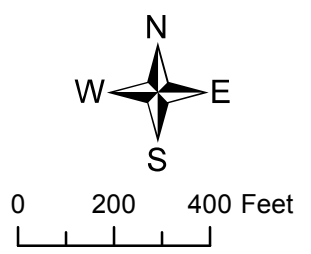
092

170



AUGUST 8, 2017

For 2018 assessment roll		
Delete	Add	Revise
To		
30,31	32,33	



Assessor's Map  
Kenai Peninsula Borough

- POPE SUB KN0730012
- POPE SUB NO 2 KN0840153
- POPE SUB NO 3 KN0840154
- HOBART SUB 1984 ADDN KN0840241
- POPE SUB NO 4 KN0850213
- HOBART SUB 1996 ADDN KN0980010
- HOBART SUB 2006 ADDN KN2006125
- POPE SUB 2016 ADDN KN2016006
- POPE SUB 2017 ADDN KN2017035

This map is prepared for Kenai Peninsula Borough Assessing Dept. use only and is not intended for conveyance nor is it a survey.  
Note- Assessor's block Numbers Shown in Ellipses  
Assessor's Parcel Numbers Shown in Circles