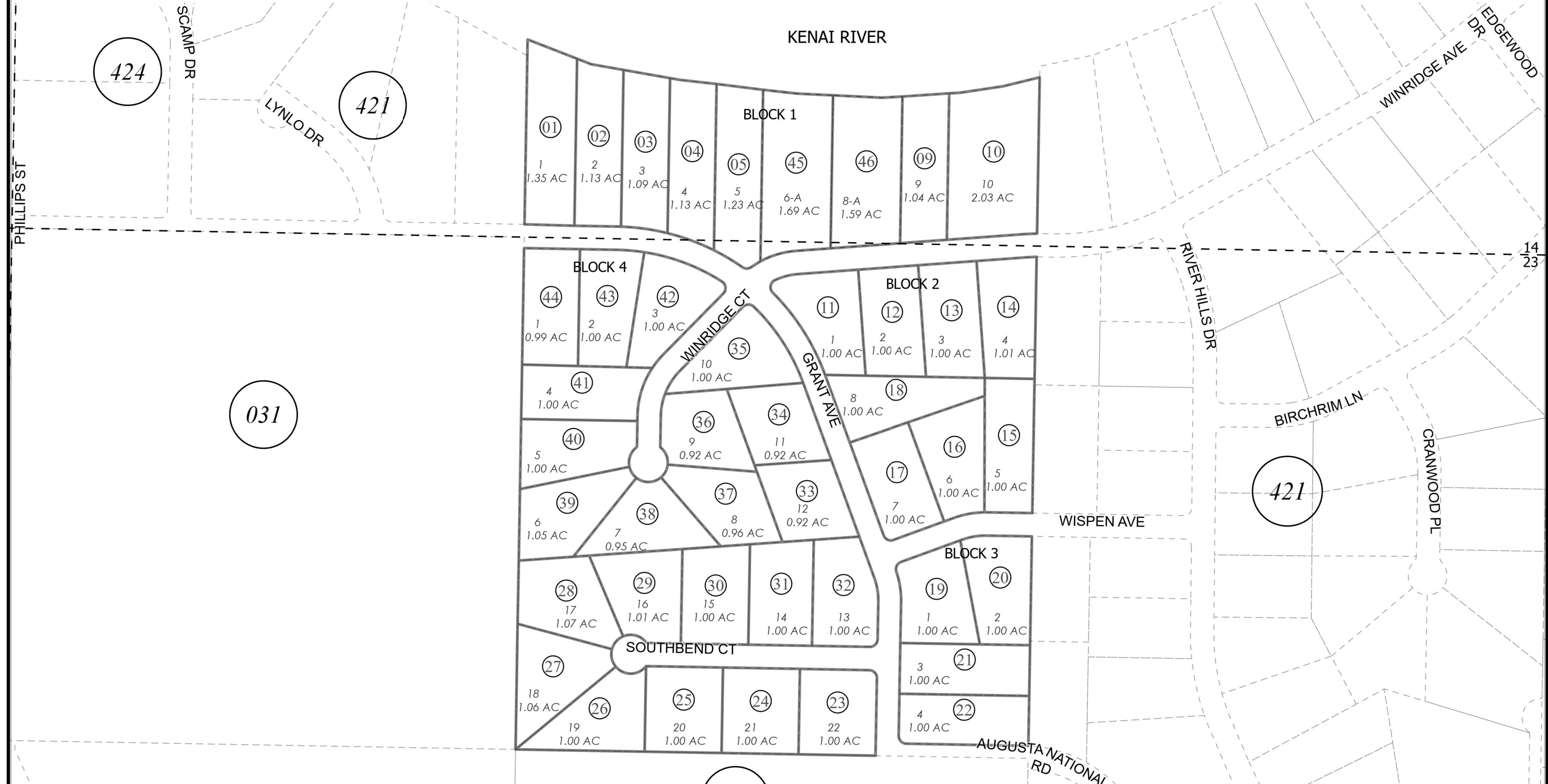


GOV'T LOT IN SEC 14 & NE1/4 NW 1/4 SEC. 23, T05N, R11W, S.M.

055-423



424

421

031

421

031

420



0 90 180 360 Feet

MAY 22, 2024

For 2025 assessment roll		
Delete	Add	Revise
To		
06-08	45-46	

Assessor's Map  
Kenai Peninsula Borough

SOUTH BEND BLUFF ESTATES KN2002042  
SOUTH BEND BLUFF ESTATES 2023 REPLAT KN2024015

This map is prepared for Kenai Peninsula Borough Assessing Dept. use only and is not intended for conveyance nor is it a survey.  
Note- Assessor's block Numbers Shown in Ellipses  
Assessor's Parcel Numbers Shown in Circles