

POR. SEC. 30, T03S, R14W, S.M.

159-201

PIPERS HAVEN UNIT 3 □ HM0980009  
 PIPER'S HAVEN UNIT 3 REPLAT □ HM2000013  
 PIPER'S HAVEN 2000 □ HM2000029  
 PIPERS HAVEN FIVE □ HM2003074  
 PIPER'S HAVEN 2018 REPLAT □ HM2018041

SEC. 19  
 SEC. 30

143

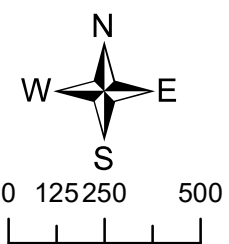
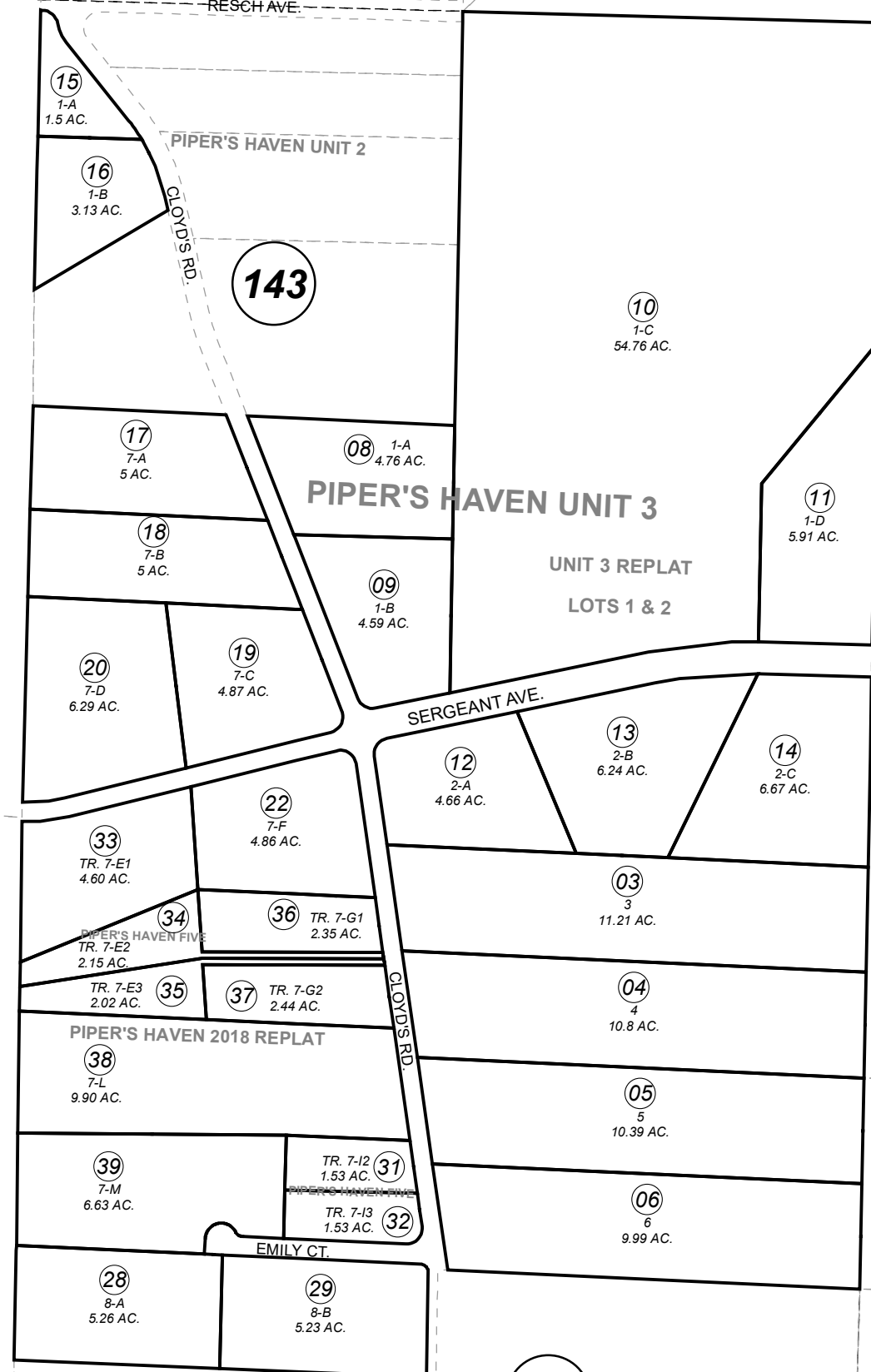
143

200

200

200

ANCHOR MILL SUBDIVISION



NOVEMBER 19, 2018

For 2019 assessment roll		
Delete	Add	Revise
To		
24,26, 27,30	38,39	

Assessor's Map  
 Kenai Peninsula Borough

STARISKI MEADOWS TWP  
 Note- Assessor's block Numbers Shown in Ellipses  
 Assessor's Parcel Numbers Shown in Circles

This map is prepared for Kenai Peninsula Borough Assessing Dept. use only and is not intended for conveyance nor is it a survey.