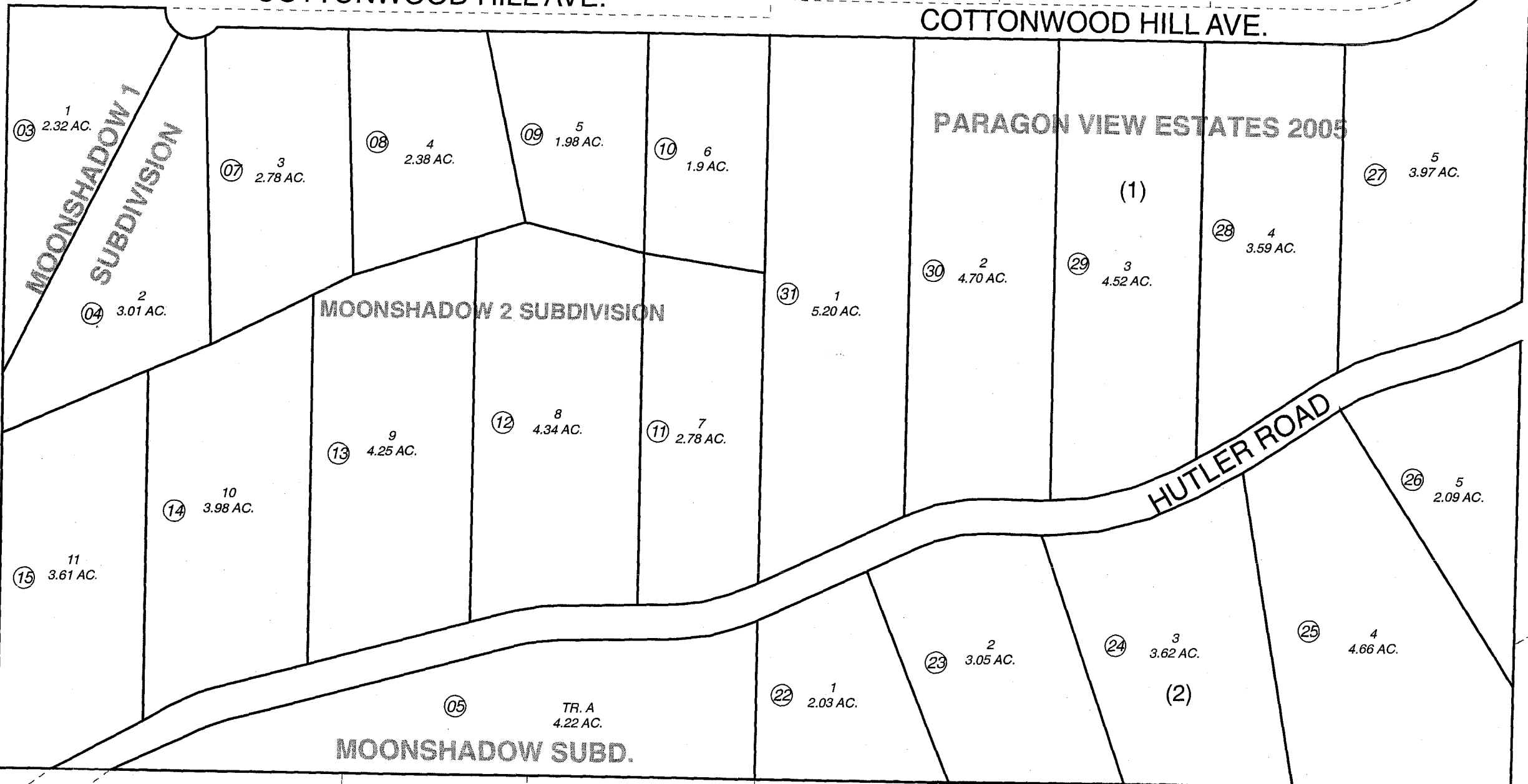


052

150

COTTONWOOD HILL AVE.

COTTONWOOD HILL AVE.



052

400

250

230



JANUARY 25, 2006

For 2006 assessment roll		
Delete	Add	Revise
To		
16		
18-21	22-31	

Assessor's Map
Kenai Peninsula Borough

MOONSHADOW SUB □ HM0800091
 MOONSHADOW 1 SUB □ HM0880034
 MOONSHADOW 2 SUB □ HM0930040
 PARAGON VIEW ESTATES 2005 □ HM2005089

This map is prepared for Kenai Peninsula Borough Assessing Dept. use only and is not intended for conveyance nor is it a survey.
 Note- Assessor's block Numbers Shown in Ellipses
 Assessor's Parcel Numbers Shown in Circles