

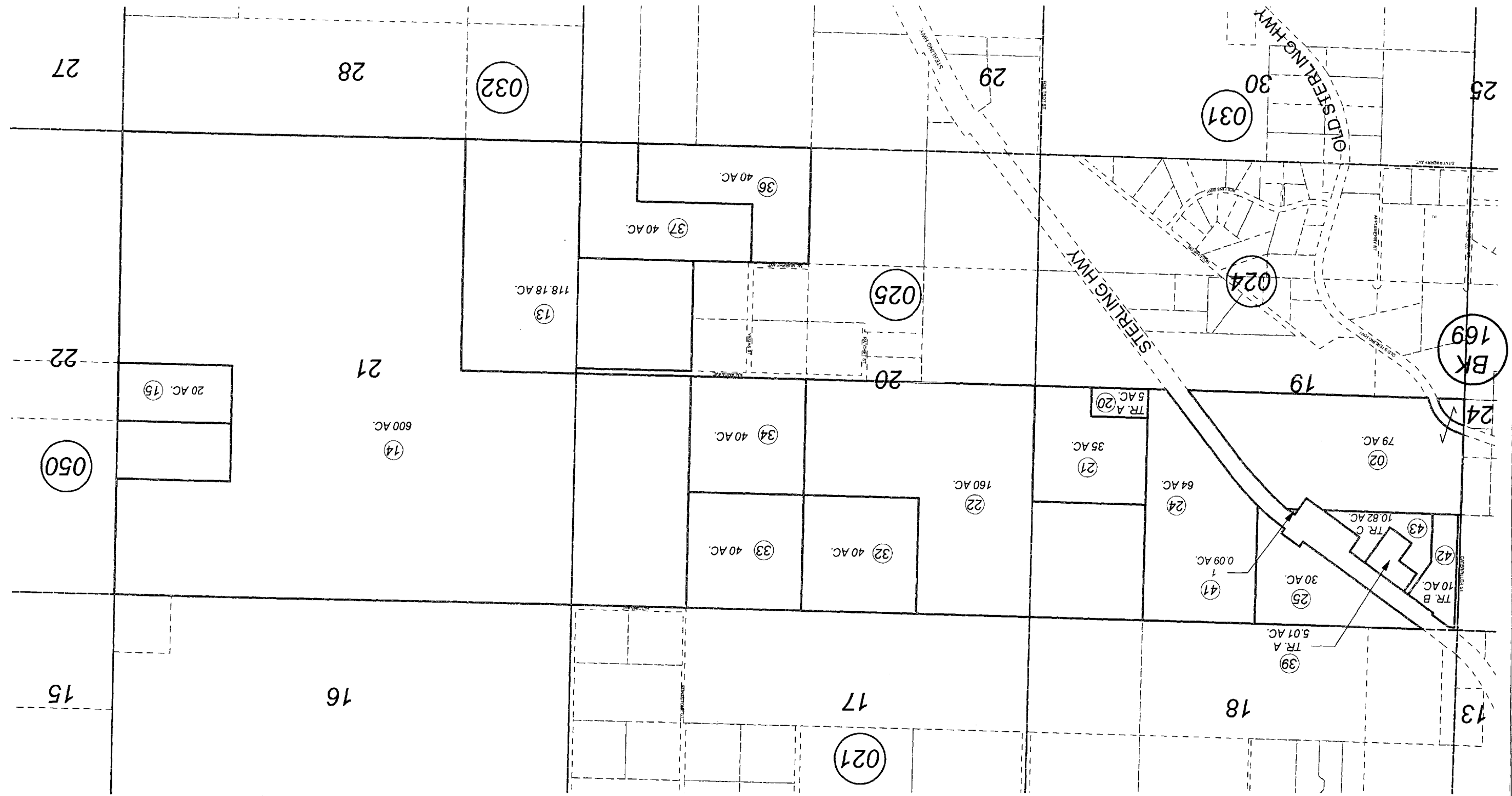
For 2011 assessment roll		
Delete	Add	Revise
40	41-43	To

SEPTEMBER 3, 2010

Assessor's Map  
Kenai Peninsula Borough

JOHN AND ETHEL SCOTT TRACT HM7301599  
TEN MILE SUB HM2007034  
TEN MILE SUB #2 HM2010036

This map is prepared  
for Kenai Peninsula  
Borough Assessing Dept.  
use only and is not  
intended for conveyance  
nor is it a survey.  
Note- Assessor's block Numbers Shown in Ellipses  
Assessor's Parcel Numbers Shown in Circles



171-022

SEC. 19-21, T05S, R14W, S.M.