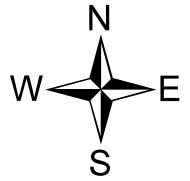
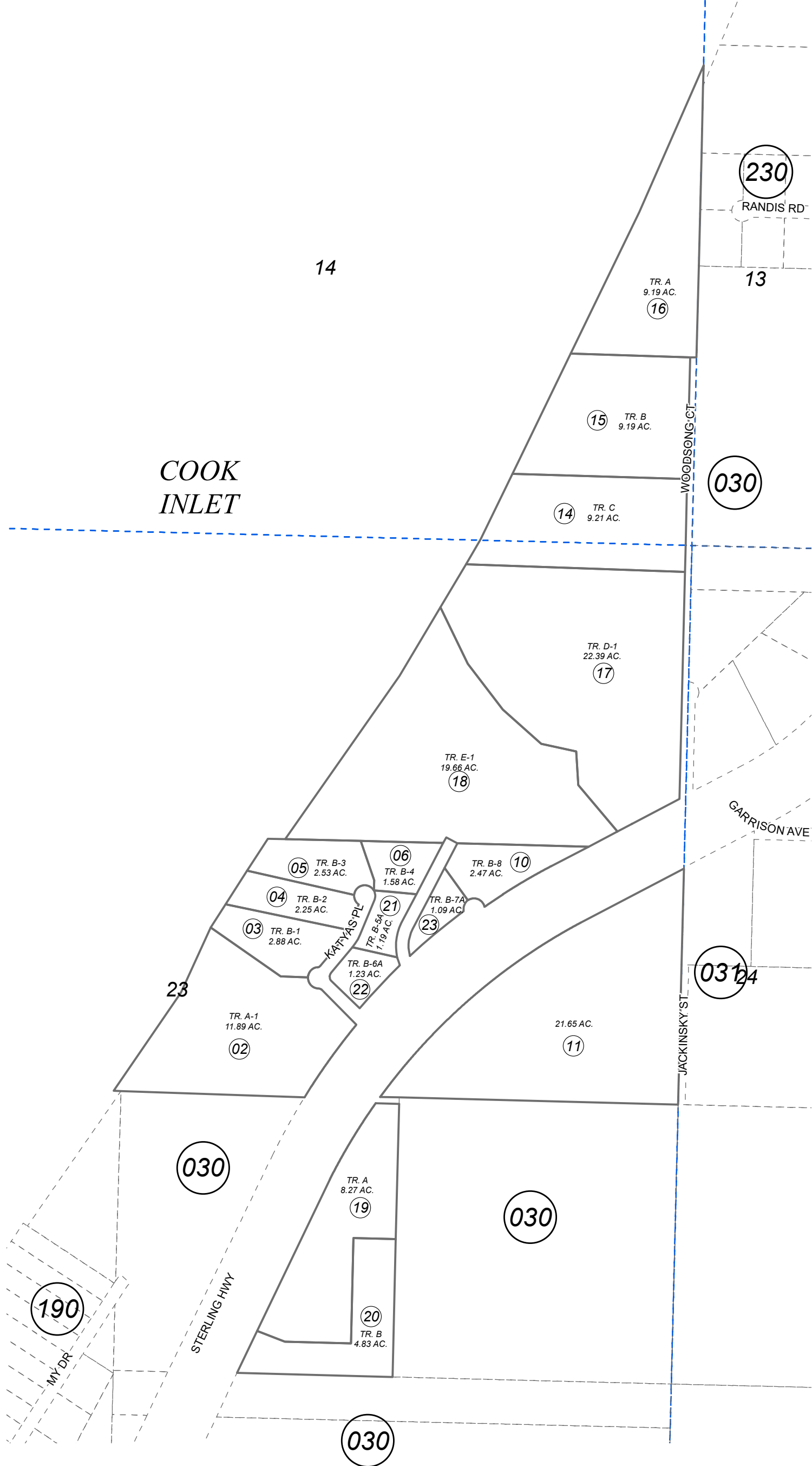


POR. SEC. 14 & 23, T01S, R14W, S.M.

157-032



0 200 400 Feet

For 2022 assessment roll		
Delete	Add	Revise
	To	
	07-09	21-23

JANUARY 18, 2023

C L HATTON SUB EAGLE'S CREST ADDN HM0930051  
 HEAVENLY SIGHTS SUB HM0960017  
 HEAVENLY SIGHTS SUB # 2 HM2002009  
 AW & ME JOHNSON TRACTS HM2004026  
 C L HATTON SUB EAGLE'S CREST ADDN BYLER REPLAT HM2022041

Assessor's Map  
 Kenai Peninsula Borough

Note- Assessor's block Numbers Shown in Ellipses  
 Assessor's Parcel Numbers Shown in Circles

This map is prepared  
 for Kenai Peninsula  
 Borough Assessing Dept.  
 use only and is not  
 intended for conveyance  
 nor is it a survey.