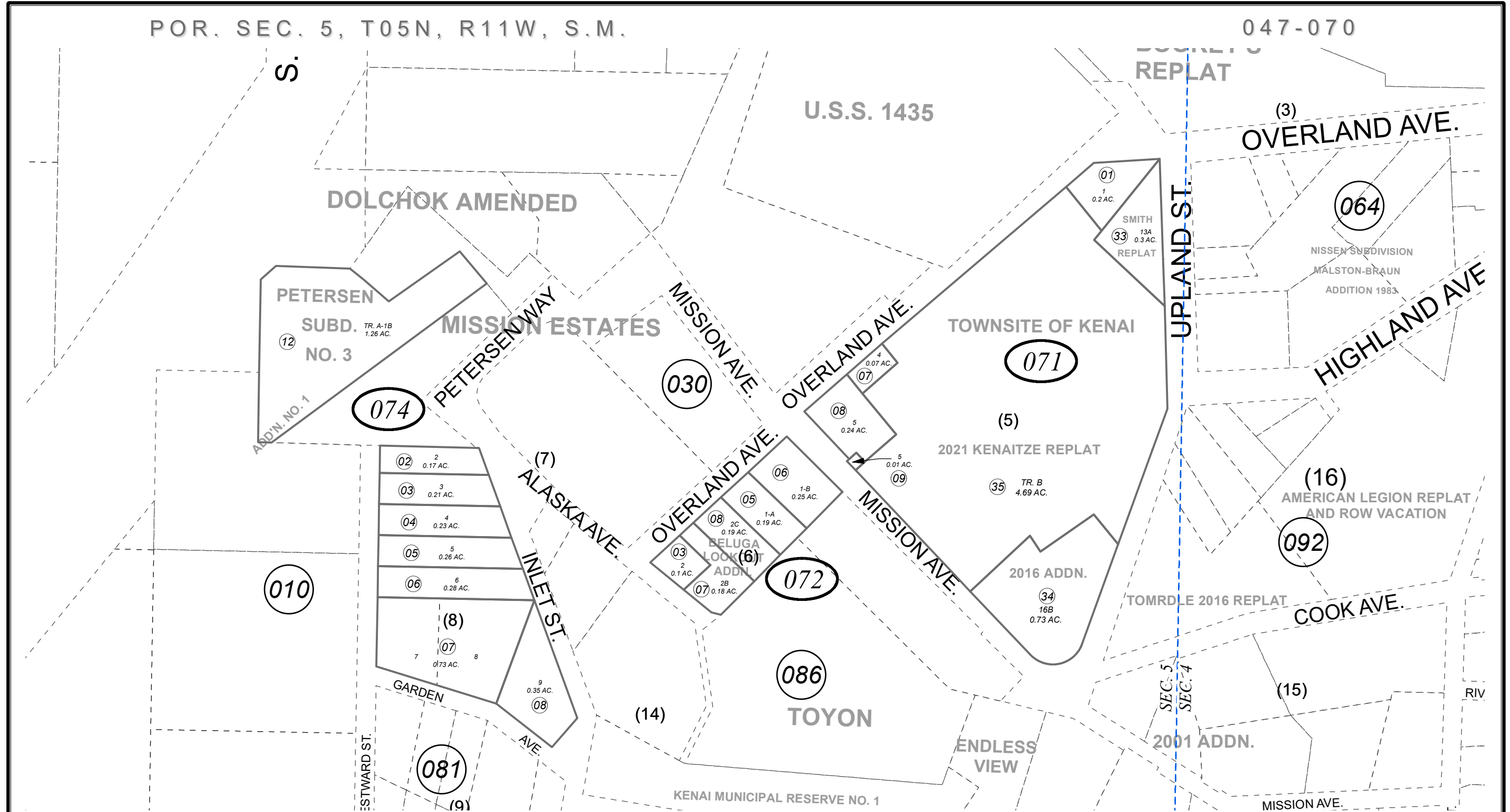


POR. SEC. 5, T05N, R11W, S.M.

047-070



JUNE 14, 2021

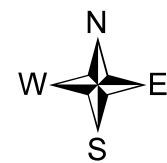
For 2022 assessment roll		
Delete	Add	Revise
To		
07130,32	35	

Assessor's Map
Kenai Peninsula Borough

ORIGINAL TOWNSITE OF KENAI □ KN0002970
 ORIGINAL TOWNSITE OF KENAI RESUB OF LOT 1 BLOCK 6 □ KN0750016
 PETERSEN SUB ADDN NO 3 □ KN0940010
 ORIGINAL TOWNSITE OF KENAI VOZAR ADDN □ KN2007004
 ORIGINAL TOWNSITE OF KENAI BELUGA LOOKOUT ADDN □ KN2011071
 TOWNSITE OF KENAI KENAITZE ADDITION SUB □ KN2012011
 ORIGINAL TOWNSITE OF KENAI SMITH REPLAT □ KN2012074
 TOWNSITE OF KENAI 2016 ADDN □ KN2017043
 TOWNSITE OF KENAI 2021 KENAITZE REPLAT □ KN2021018

This map is prepared for Kenai Peninsula Borough Assessing Dept. use only and is not intended for conveyance nor is it a survey.

Note- Assessor's block Numbers Shown in Elipses
Assessor's Parcel Numbers Shown in Circles



0 50 100 200 Feet