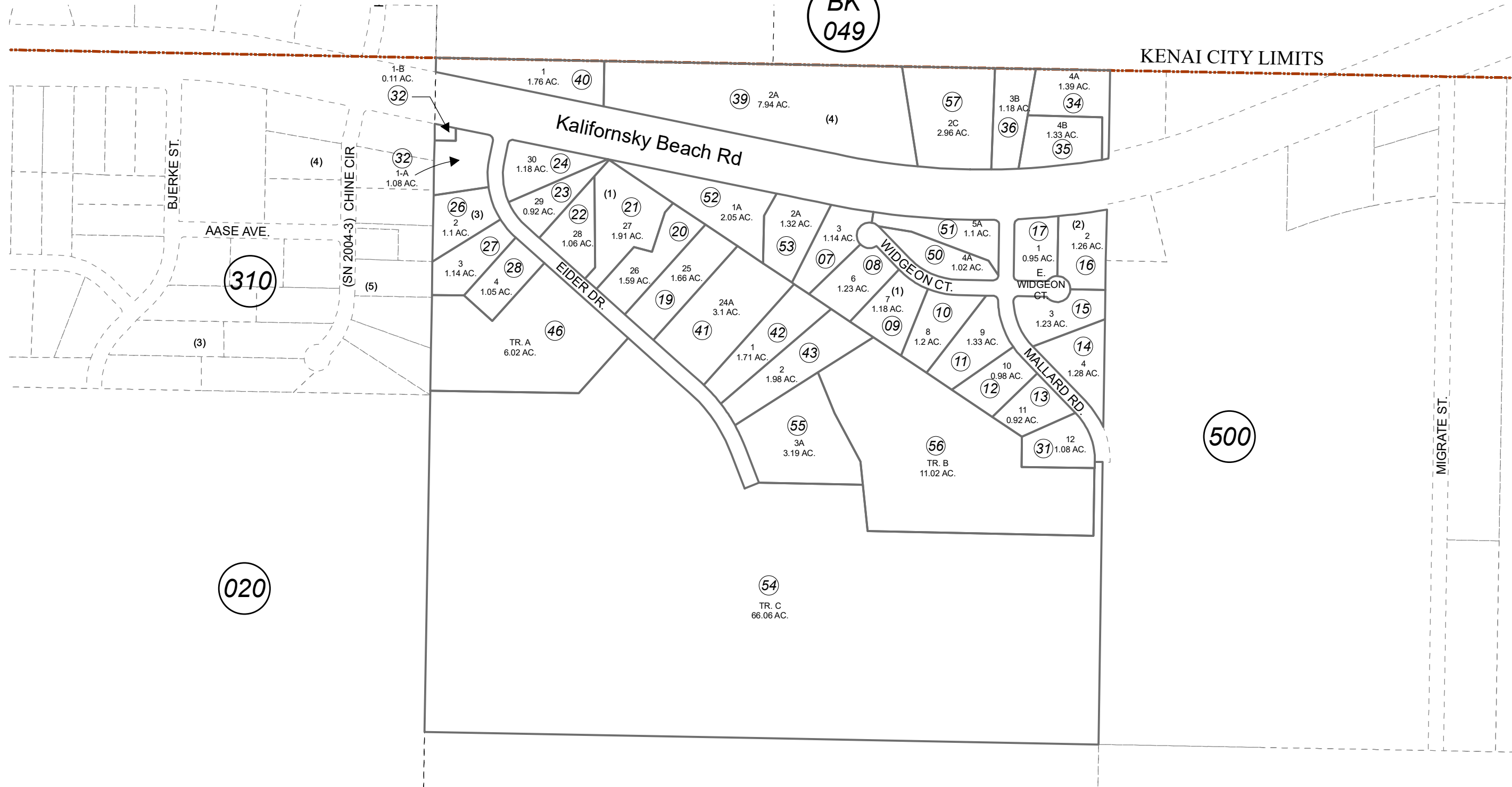


NW 1/4 SEC. 21, T05N, R11W, S.M.

055-350

BK  
049

KENAI CITY LIMITS



310

020

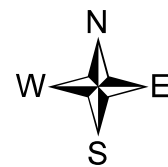
500

020

SEPTEMBER 16, 2021

For 2022 assessment roll

Delete	Add	Revise
	To	
37,38, 44,47	54-57,	



0 200 400 Feet

Assessor's Map  
Kenai Peninsula Borough

BEAVER DAM ESTATES SUB PART 1 KN0770180  
 BEAVER DAM ESTATES SUB PART 2 KN0780180  
 BEAVER DAM ESTATES SUB PART 3 KN0790181  
 BEAVER DAM ESTATES SUB PART 2 ADDN NO 1 KN0790212  
 BEAVER DAM ESTATES SUB PART 4 KN0830067  
 BEAVER DAM ESTATES PART 5 KN0950077  
 BEAVER DAM ESTATES PART SIX KN2005006  
 BEAVER DAM ESTATES 2013 REPLAT KN2014052  
 BEAVER DAM ESTATES 2014 REPLAT KN2014093  
 BEAVER DAM ESTATES PART SEVEN KN2021045

This map is prepared for Kenai Peninsula Borough Assessing Dept. use only and is not intended for conveyance nor is it a survey.

Note- Assessor's block Numbers Shown in Elipses  
Assessor's Parcel Numbers Shown in Circles