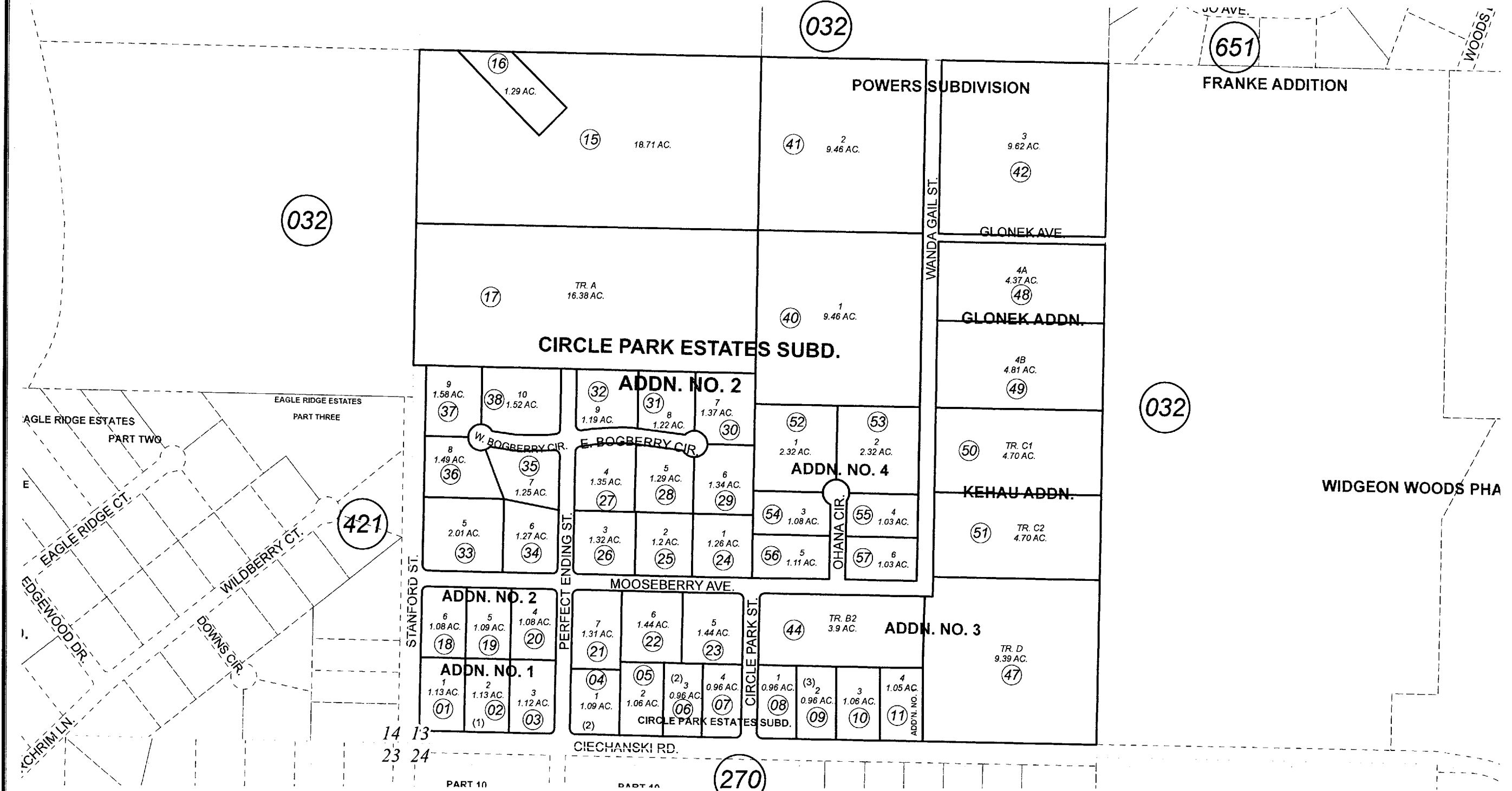


SW1/4 SEC. 13, T05N, R11W, S.M.

055-530



JANUARY 5, 2010

For 2010 assessment roll		
Delete	Add	Revise
To		
45	52-57	



Assessor's Map  
Kenai Peninsula Borough

- CIRCLE PARK ESTATES SUB □ KN0760163
- CIRCLE PARK ESTATES SUB ADDN NO 1 □ KN0800118
- CIRCLE PARK ESTATES SUB ADDN 2 □ KN0840044
- POWERS SUB □ KN0980087
- CIRCLE PARK ESTATES SUB ADDN NO 3 □ KN2000013
- POWERS SUB GLONEK ADDN □ KN2003068
- CIRCLE PARK ESTATES SUB KEHAU ADDN □ KN2004061

This map is prepared for Kenai Peninsula Borough Assessing Dept. use only and is not intended for conveyance nor is it a survey.  
Note- Assessor's block Numbers Shown in Ellipses  
Assessor's Parcel Numbers Shown in Circles