

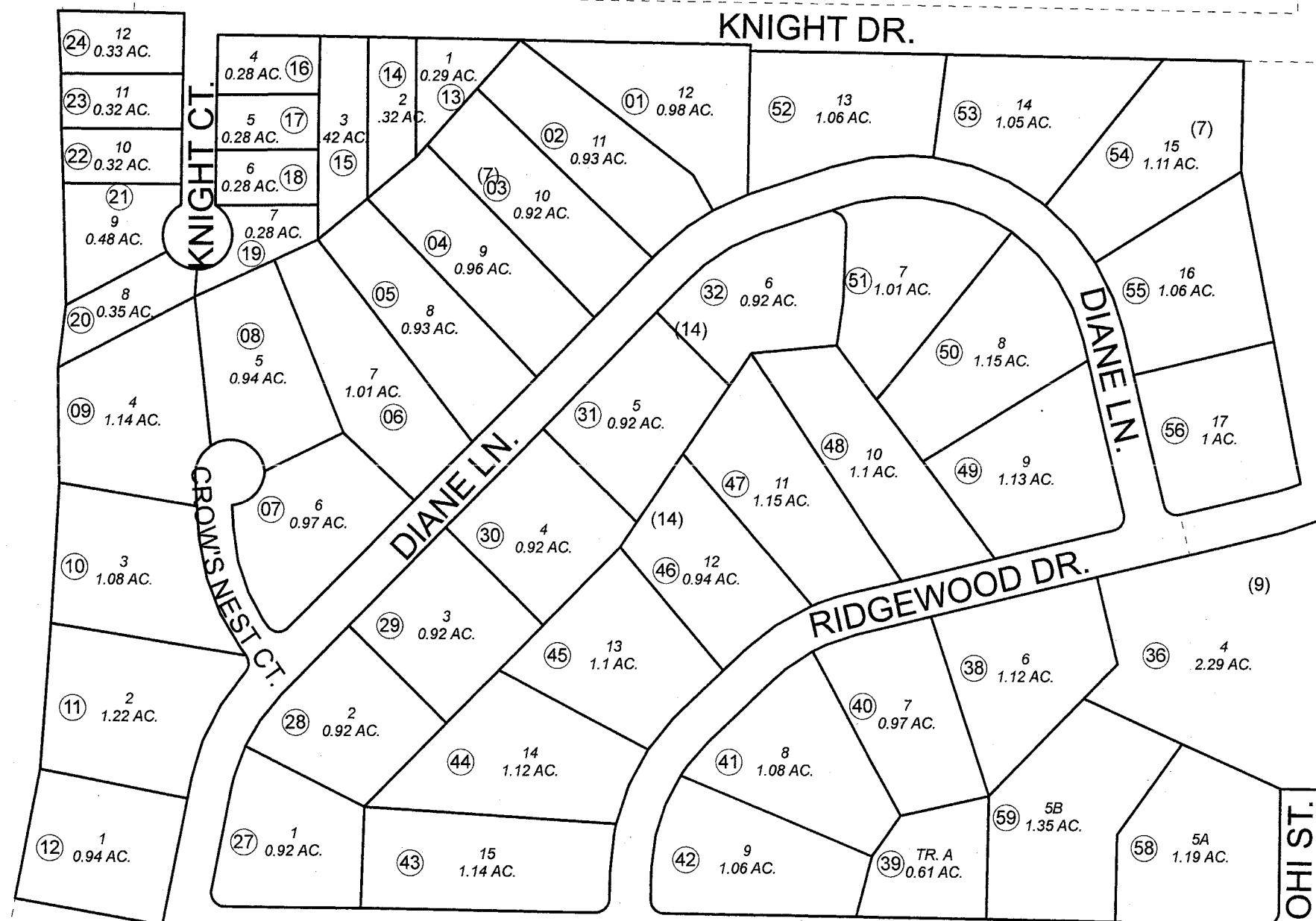
POR. SEC. 30, T05N, R10W, S.M.

BK
057

059-300

EVE

KNIGHT DR.



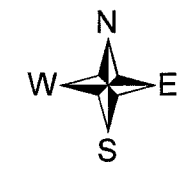
BK
055

312

301

DECEMBER 29, 2007

For 2008 assessment roll		
Delete	Add	Revise
To		
37	58,59	



Assessor's Map
Kenai Peninsula Borough

KNIGHT ESTATES SUB NO 3 □ KN0001612
 MOORING ESTATES SUB PART 1 □ KN0730051
 MOORING ESTATES SUB PART 18 □ KN0880072
 MOORING ESTATES SUB PART 21 □ KN0920012
 MOORING ESTATES SUB VANN ADDN □ KN2007135

This map is prepared for Kenai Peninsula Borough Assessing Dept. use only and is not intended for conveyance nor is it a survey.
 Note- Assessor's block Numbers Shown in Elipses
 Assessor's Parcel Numbers Shown in Circles