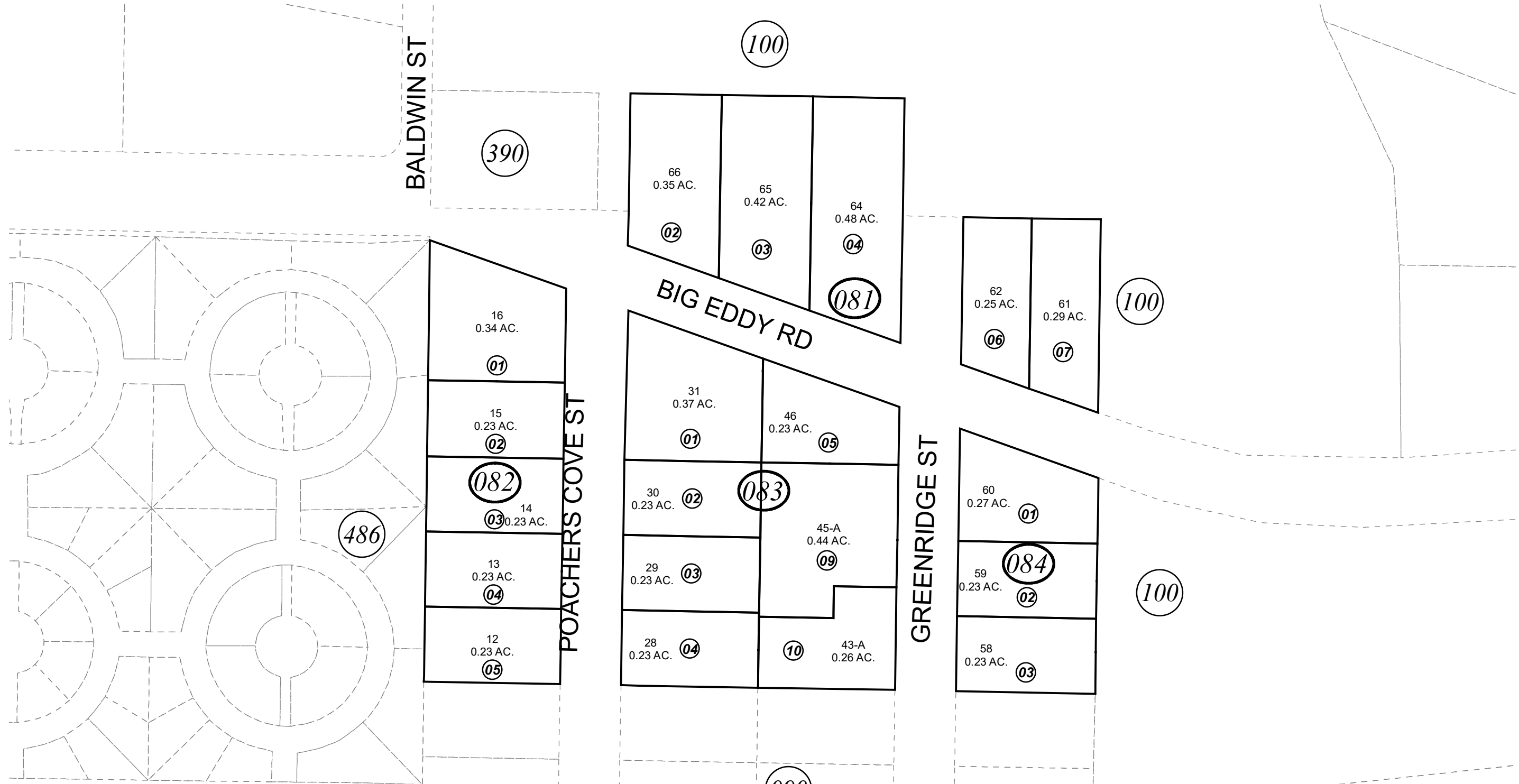
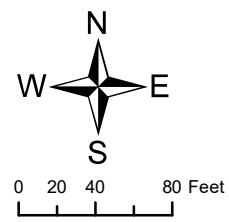


POR. SEC. 19, T05N, R10W, S.M.

057-080



OCTOBER 21, 2019



For 2020 assessment roll		
Delete	Add	Revise
	To	
08306	08309	
08307	08310	
08308		

Assessor's Map
Kenai Peninsula Borough

KN0001453 RAINBOW SUB
KN2019043 RAINBOW SUB O'BRIEN REPLAT

This map is prepared for Kenai Peninsula Borough Assessing Dept. use only and is not intended for conveyance nor is it a survey.
Note- Assessor's block Numbers Shown in Elipses
Assessor's Parcel Numbers Shown in Circles