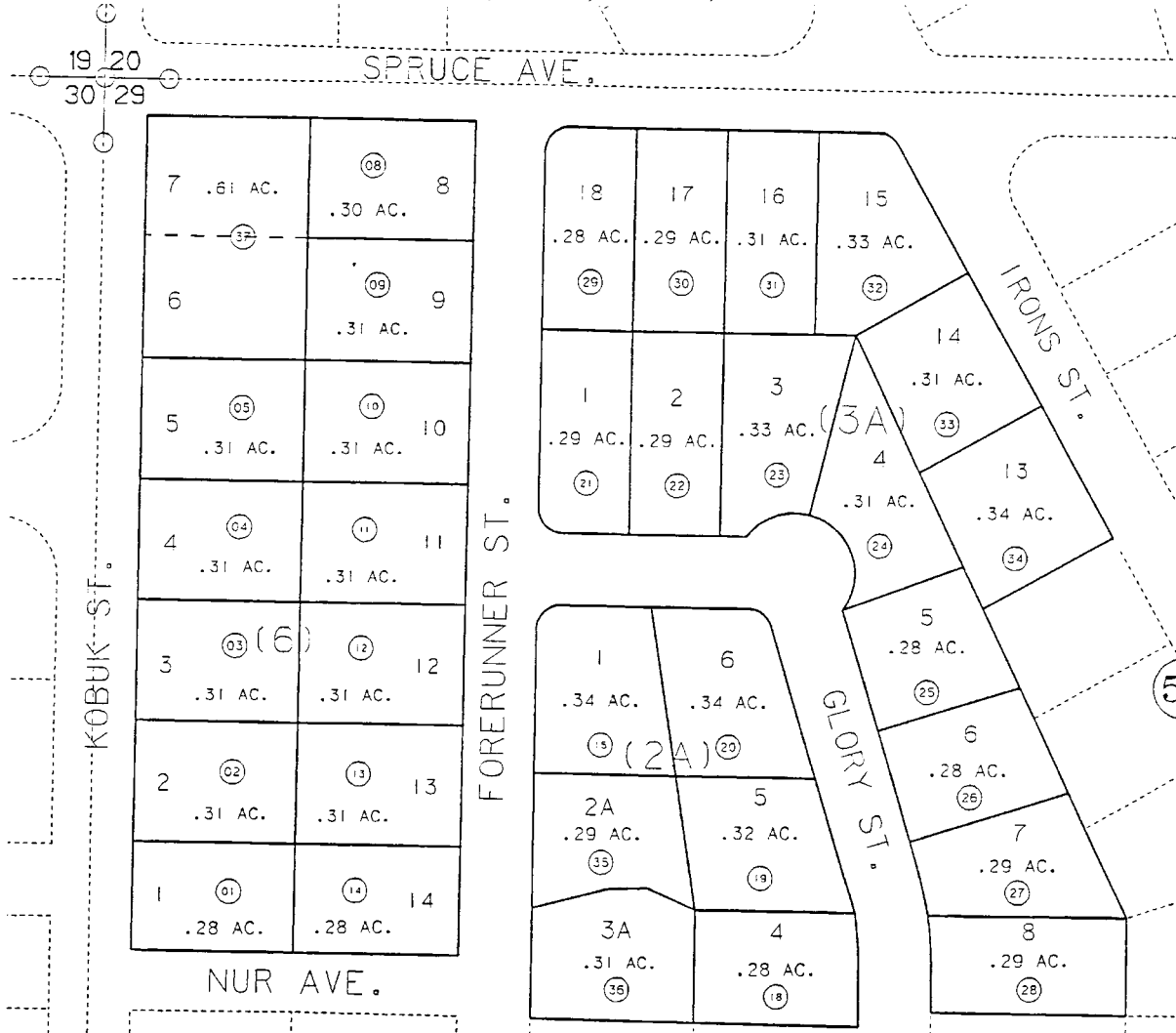


PORTION OF SEC. 29, T5N, R10W, SEWARD MERIDIAN

057-530



50

54

52

DATE: JAN. 17, 1994

FOR 1994 ASSESSMENT ROLL

DELETE	ADD	REVISED
-	TO	
6,7	37	

IRONS LOTS 1-13 BLOCK 3 & BLOCK 6
 IRONS BLOCK 2A & PORTION BLOCK 3A
 IRONS PORTIONS OF BLOCKS 3A, 9 & 10
 IRONS JONES ADDN.

KN001516
 KN720011
 KN740111
 KN920078

NOTE - Assessor's Block Numbers Shown In Ellipses Assessor's Map
 Assessor's Parcel Numbers Shown In Circles Kenai Peninsula Borough

THIS MAP IS PREPARED FOR KENAI PENINSULA BOROUGH ASSESSING DEPT. USE ONLY AND IS NOT INTENDED FOR ANY OTHER USE OR REPRESENTATION