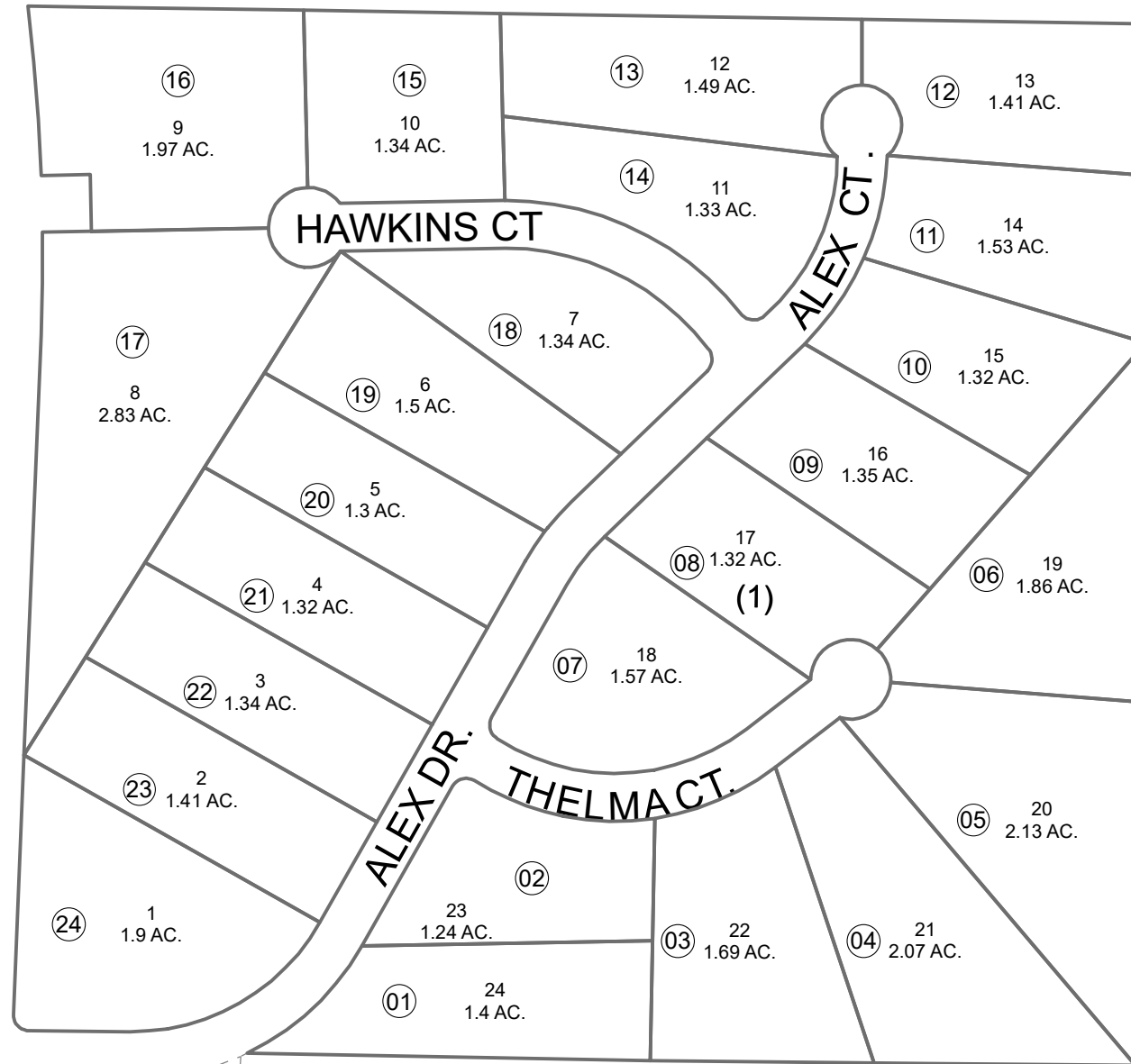


8 CHURCHILL AVE.

TOWER AVE.

013

SWALE CT.



640

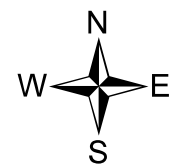
17

043

ADFORD AVE.

045

JUNE 17, 2022



0 50 100 200 Feet

For 2023 assessment roll		
Delete	Add	Revise
To		16
(ACREAGE REVISED)		

Assessor's Map  
Kenai Peninsula Borough

KELLY PARK SUB KN0780153

Note- Assessor's block Numbers Shown in Ellipses  
Assessor's Parcel Numbers Shown in Circles

This map is prepared for Kenai Peninsula Borough Assessing Dept. use only and is not intended for conveyance nor is it a survey.