

CENTRAL AVE.

EVERWELL PL.

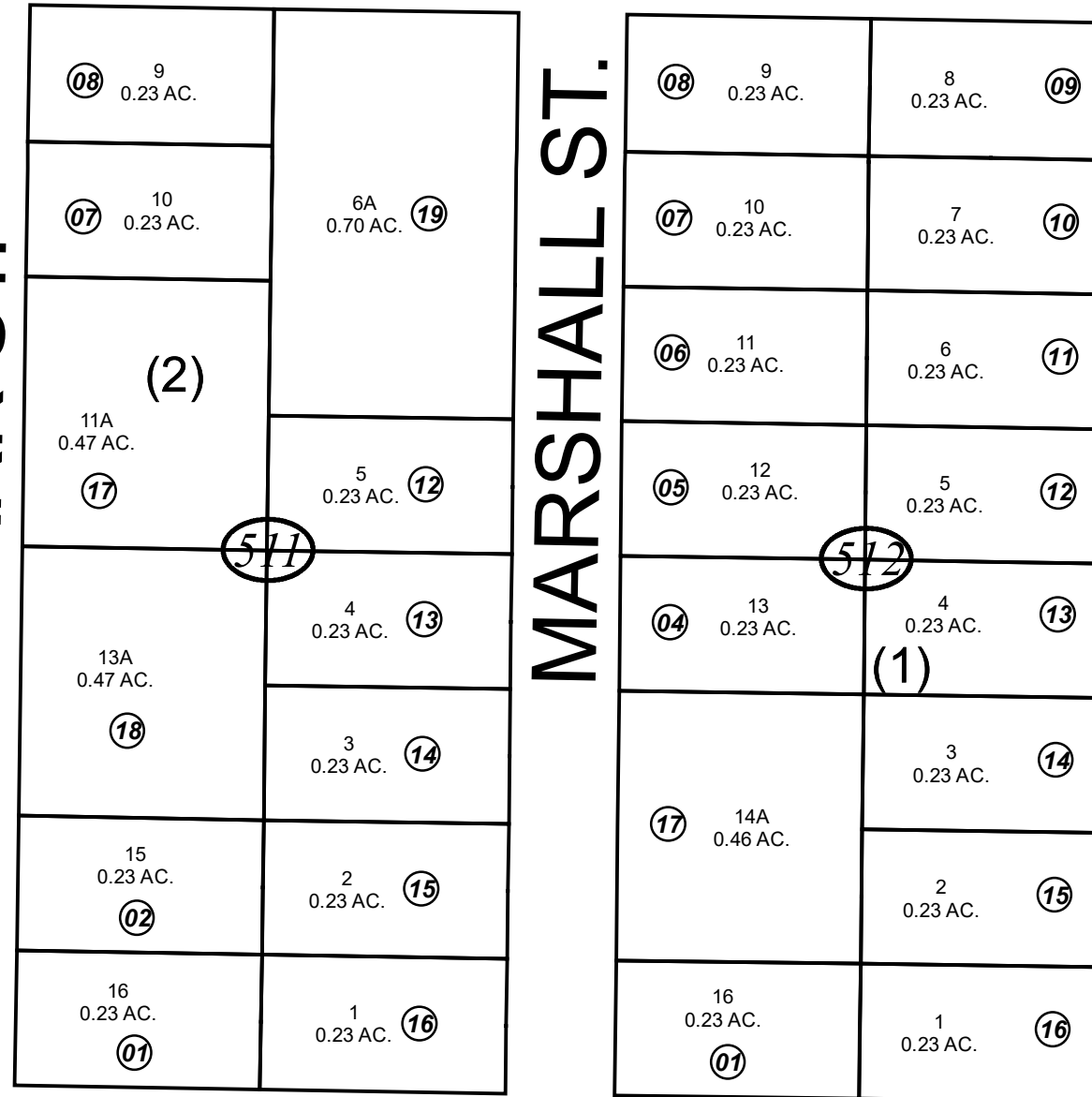
SUNSET PARK ST.

MARSHALL ST.

NUR AVE.

FORERUNNER ST.

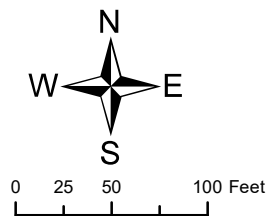
SEC. 30  
SEC. 29



KNIGHT DR.

JUNE 4, 2019

For 2020 assessment roll		
Delete	Add	Revise
	To	
51202,	51217	
51203		



Assessor's Map  
Kenai Peninsula Borough

KN0001059 SUNSET PARK SUB  
 KN2015070 SUNSET PARK SUB MAHAN ADDN  
 KN2015096 SUNSET PARK SUB MCCALL ADDN  
 KN2019017 SUNSET PARK SUB 2019 REPLAT

This map is prepared for Kenai Peninsula Borough Assessing Dept. use only and is not intended for conveyance nor is it a survey.

Note- Assessor's block Numbers Shown in Ellipses  
 Assessor's Parcel Numbers Shown in Circles