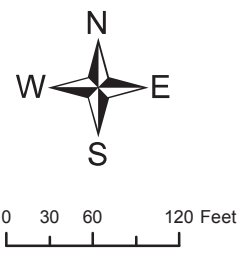
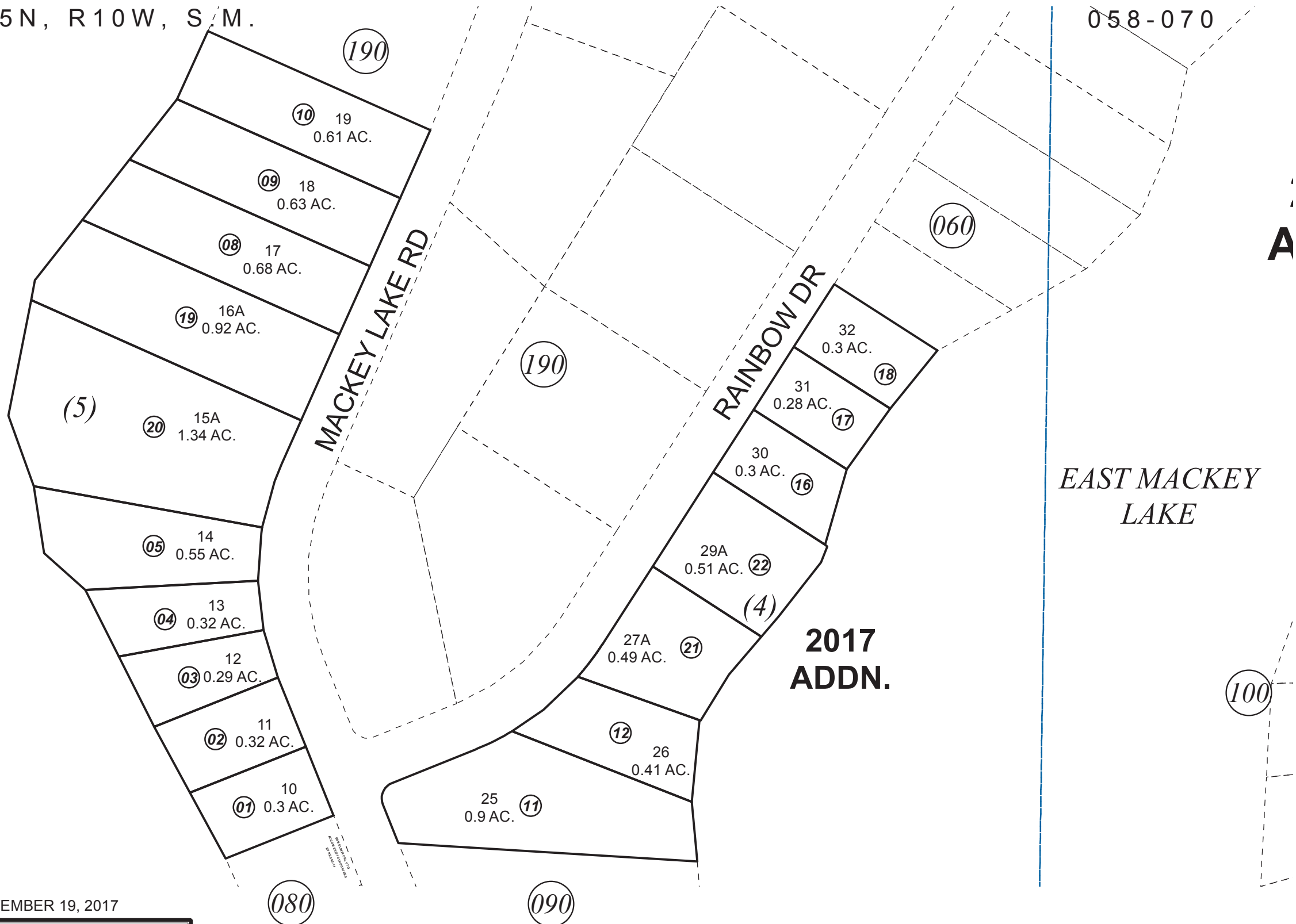


POR. SEC. 15, T05N, R10W, S. M.

058-070

WEST MACKEY
LAKE

EAST MACKEY
LAKE



SEPTEMBER 19, 2017

For 2018 assessment roll		
Delete	Add	Revise
	To	
13-15	21,22	

Assessor's Map
Kenai Peninsula Borough

KN0001681 MACKEY LAKES SUB ADDN NO 1
KN0900018 MACKEY LAKES SUB ADDN NO 1 PART 9
KN2017047 MACKEY LAKES SUB 2017 ADDN

This map is prepared for Kenai Peninsula Borough Assessing Dept. use only and is not intended for conveyance nor is it a survey.
Note- Assessor's block Numbers Shown in Elipses
Assessor's Parcel Numbers Shown in Circles