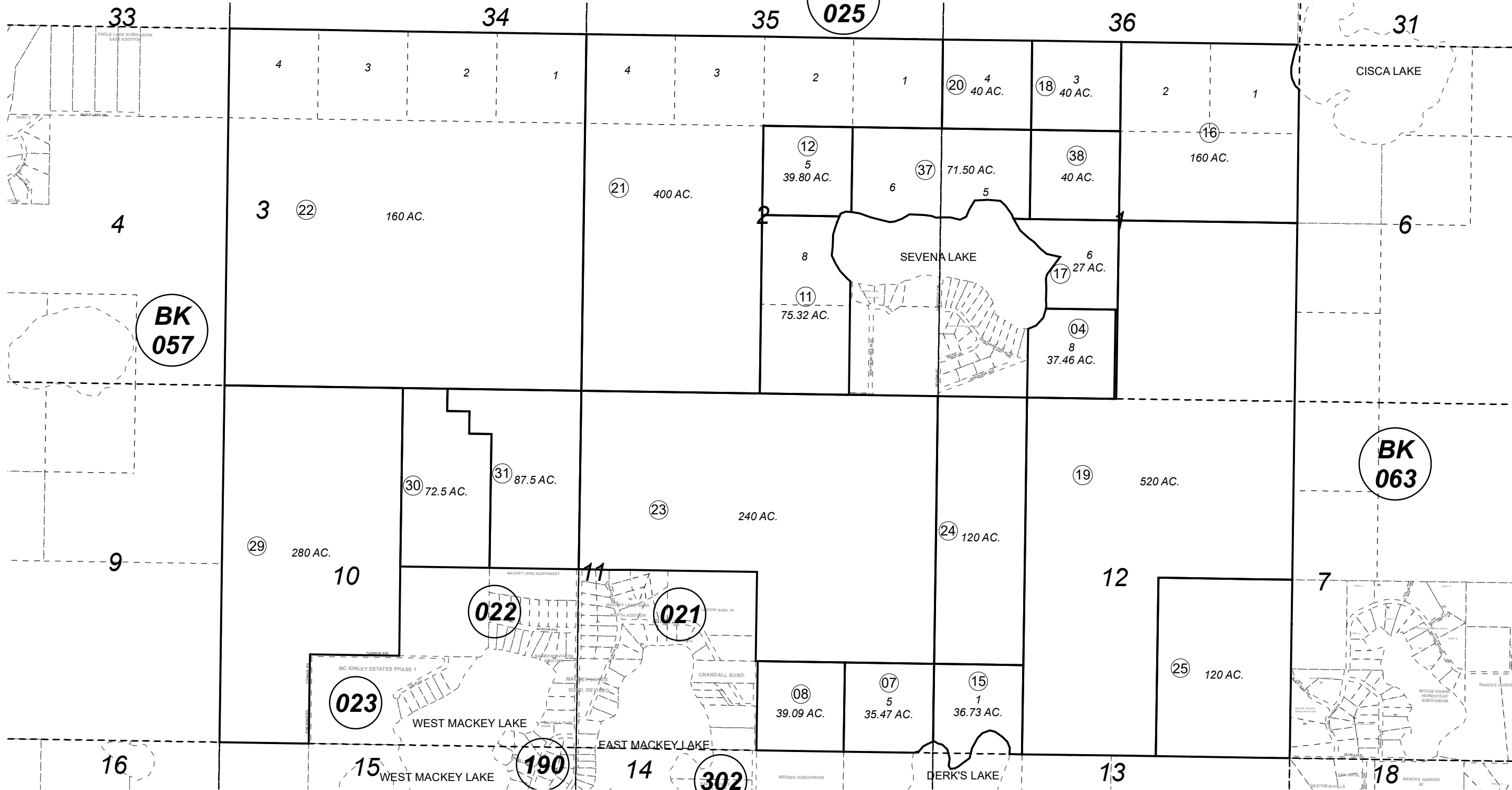


SEC. 1-3 AND 10-12, T05N, R10W, S.M.

**BK
025**

058-010



**BK
057**

**BK
063**



0 1,000 2,000 Feet

DECEMBER 26, 2019

For 2020 assessment roll		
Delete	Add	Revise
To		11,12
(ACREAGE CHANGE)		

Assessor's Map
Kenai Peninsula Borough

RECORD OF SURVEY KN2020020

This map is prepared for Kenai Peninsula Borough Assessing Dept. use only and is not intended for conveyance nor is it a survey.

Note- Assessor's block Numbers Shown in Ellipses
Assessor's Parcel Numbers Shown in Circles