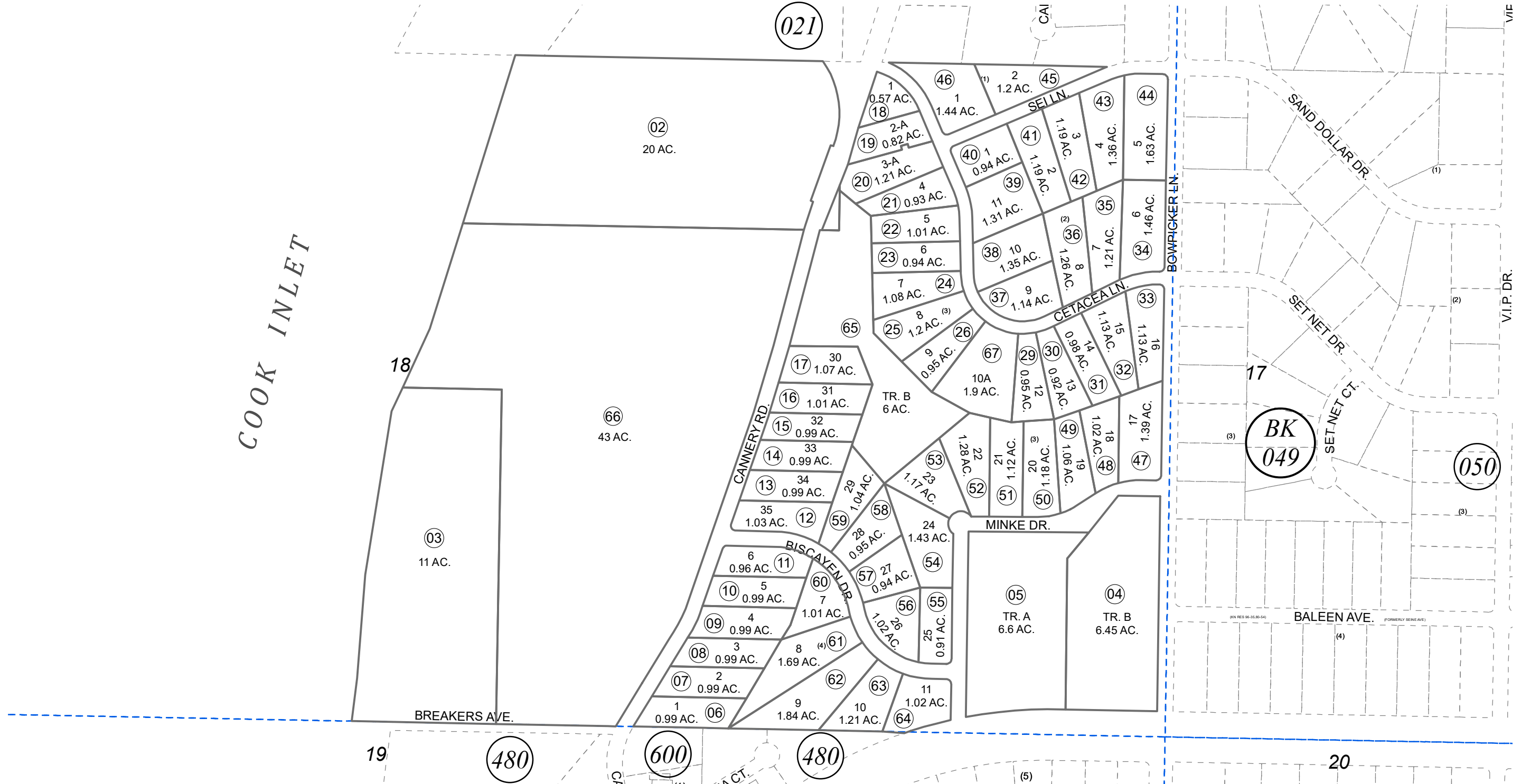


S1/2 SEC. 18, T05N, R11W, S.M.

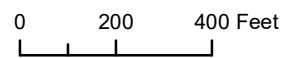
055-340

COOK INLET



DECEMBER 19, 2023

For 2024 assessment roll		
Delete	Add	Revise
	To	
27,28	67	



Assessor's Map
Kenai Peninsula Borough

KYZER PROPERTY KN0770106
 BELUGA BAY ESTATES PART 1 KN0770154
 BELUGA BAY ESTATES PART 2 KN0770155
 BELUGA BAY ESTATES PART 3 KN0800009
 BELUGA BAY ESTATES PART 4 KN0810088
 BELUGA BAY ESTATES PART TWO KN0830043
 BELUGA BAY ESTATES SUB BARNETT REPLAT KN2023057

This map is prepared for Kenai Peninsula Borough Assessing Dept. use only and is not intended for conveyance nor is it a survey.

Note- Assessor's block Numbers Shown in Ellipses
Assessor's Parcel Numbers Shown in Circles