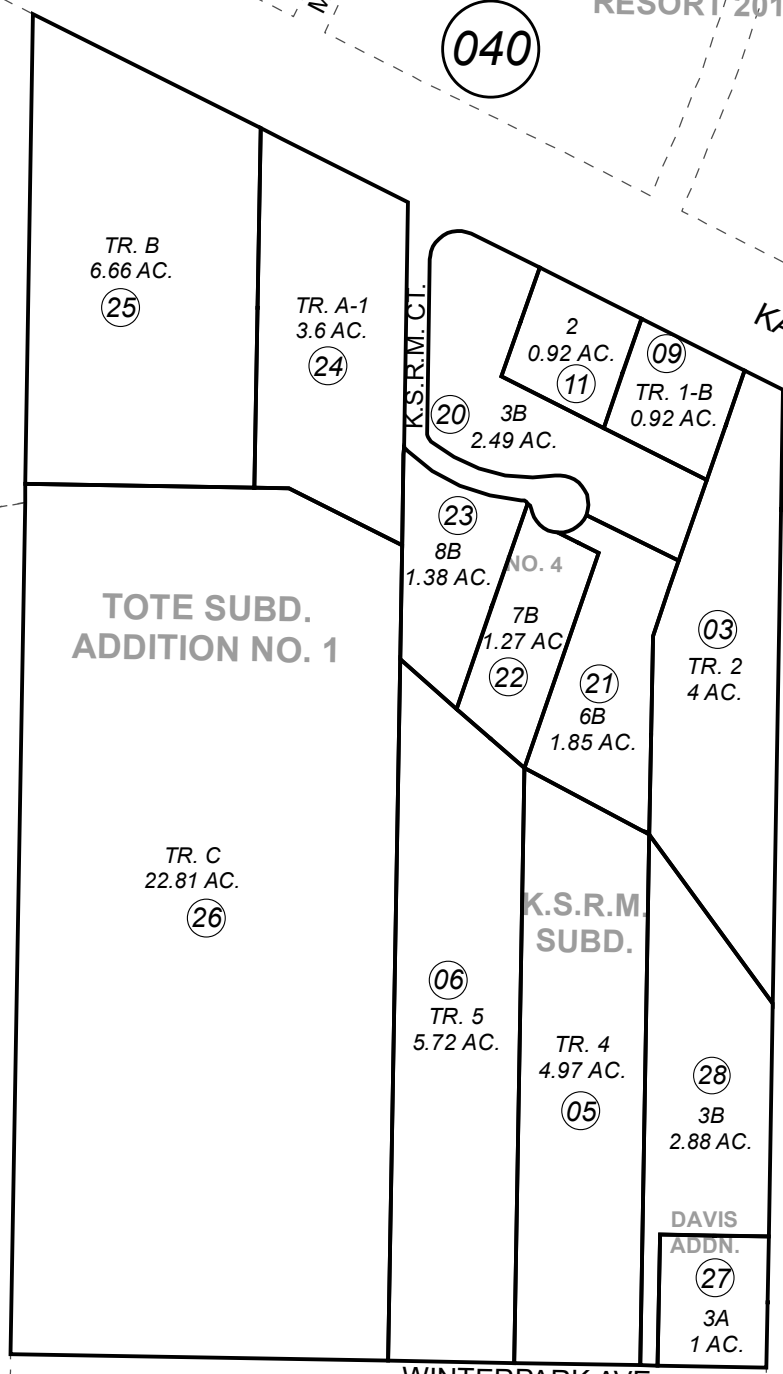


POR. E1/2 NW1/4 SEC. 22, T05N, R11W, S.M.

055-470

AQUACULTURE
SUBDIVISION

DIAMOND M
RESORT 2018 ADDN.



031

040

460

400



0 200 400 Feet

FEBRUARY 12, 2020

For 2020 assessment roll		
Delete	Add	Revise
To		
18		

Assessor's Map
Kenai Peninsula Borough

K S R M SUB KN0790005
 TOTE SUB KN0800103
 K S R M SUB TRACTA 1-A & 1-B KN0830006
 K S R M SUB NO 3 KN0840311
 KSRM SUB NO 4 KN0970075
 TOTE SUB ADDN NO 1 KN2007030
 K.S.R.M. SUB DAVIS ADDN KN2014016

This map is prepared for Kenai Peninsula Borough Assessing Dept. use only and is not intended for conveyance nor is it a survey.

Note- Assessor's block Numbers Shown in Elipses
Assessor's Parcel Numbers Shown in Circles