

055-410

POR. E1/2 E1/2 NE1/4 SEC. 34, T05N, R11W, S.M.

HOWELL ST

260

DANA BAYES ST S

W POPPY LN

COCKROBIN CT

WHISPERWOOD ST

440

BIRDSONG CT

BIRDSONG AVE

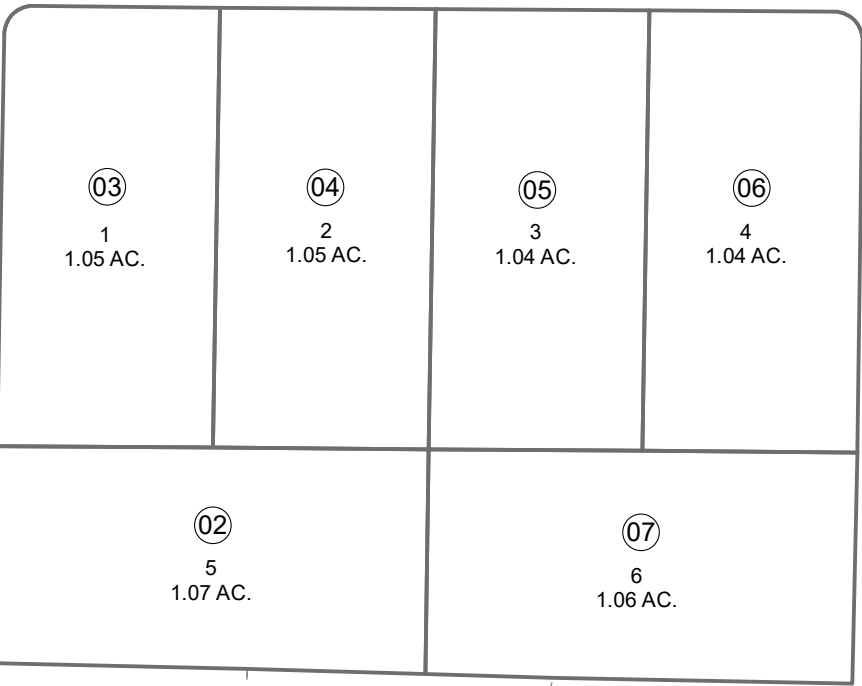
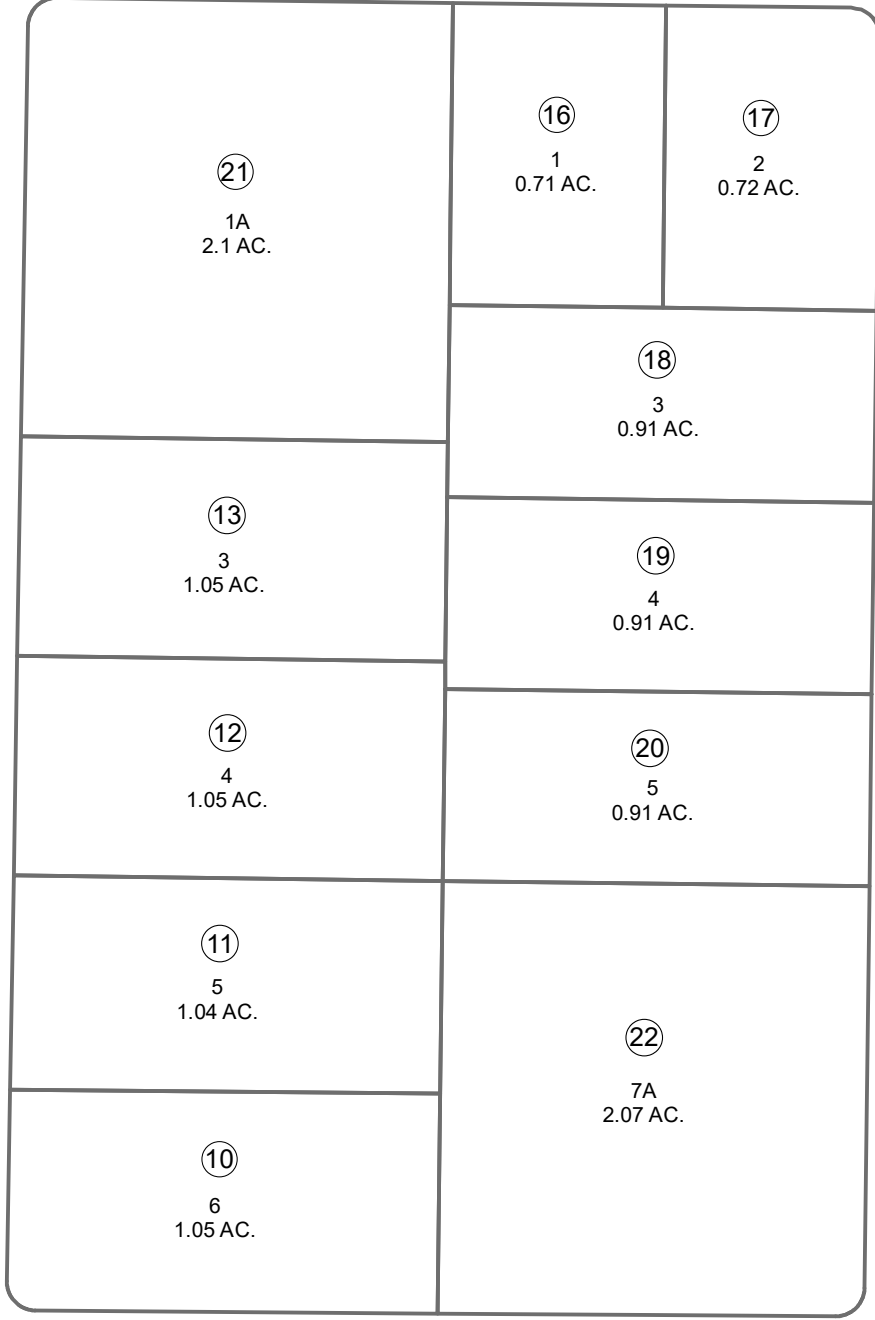
ETHEREAL ST N

073

WHISPER WAY

WINDSONG CT

440



This map is prepared for Kenai Peninsula Borough Assessing Dept. use only and is not intended for conveyance nor is it a survey.

Note- Assessor's block Numbers Shown in Ellipses Assessor's Parcel Numbers Shown in Circles

KN0780116 ALISYN ACRES SUB
KN0780135 POPPY LANE ESTATES
KN0980055 ALISYN ACRES SUB YOUNG ADDN

Assessor's Map
Kenai Peninsula Borough



0 50 100 Feet

JANUARY 19, 2023

For 2022 assessment roll	
Delete	Add
	Revise
To	
08,09	22