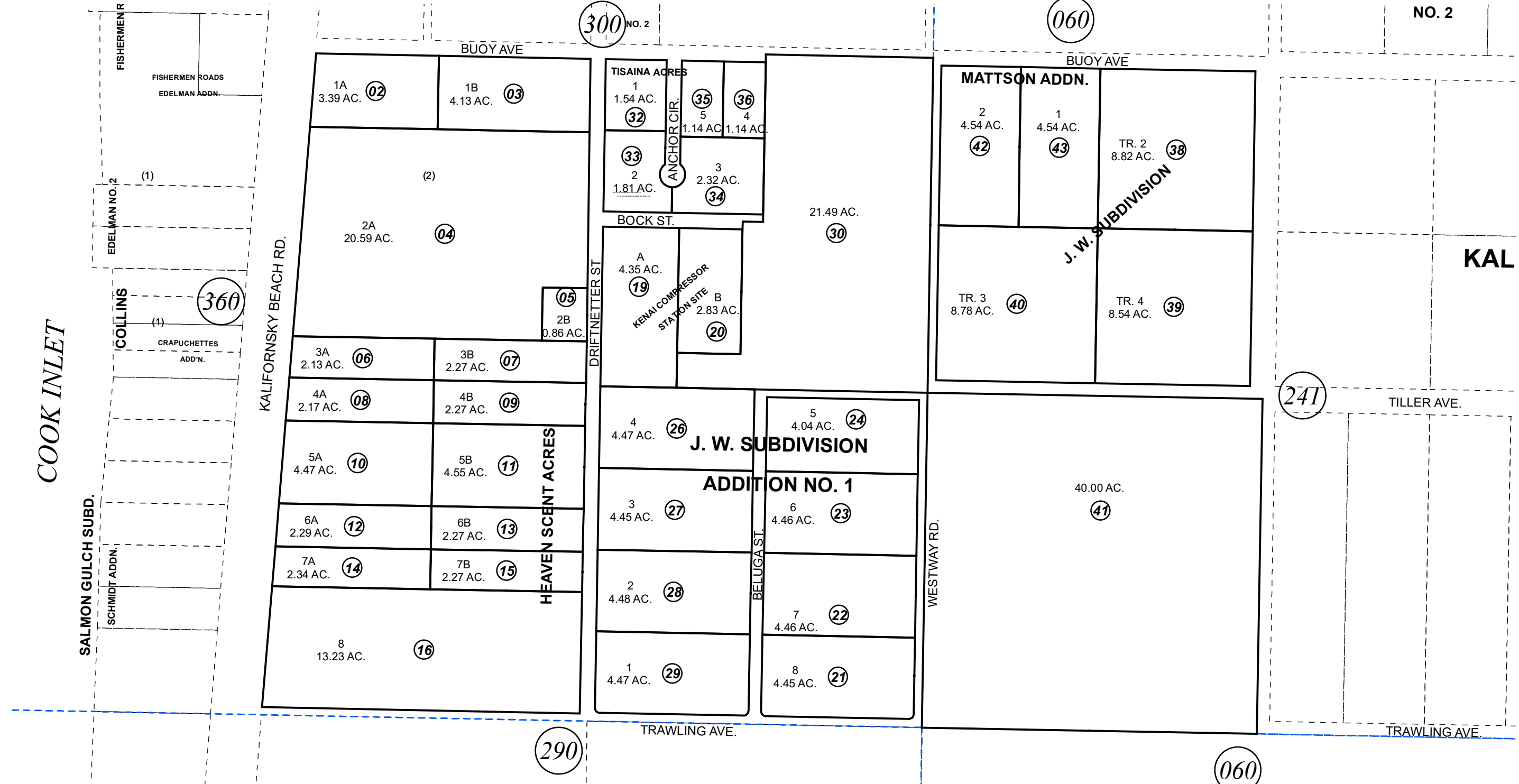


SE1/4 SEC. 30 & W1/2 SW1/4 SEC. 29, T05N, R11W, S.M.

055-140

NO. 2



COOK INLET

KALIFORSKY BEACH RD.

HEAVEN SCENT ACRES

J. W. SUBDIVISION  
ADDITION NO. 1

J. W. SUBDIVISION

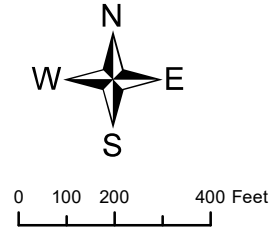
KAL

JANUARY 11, 2019

For 2019 assessment roll		
Delete	Add	Revise
To		
37	42,43	

- KN0001650 HEAVEN SCENT ACRES SUB
- KN0001677 KENAI COMPRESSOR STATION SITE
- KN0780162 TISAINA ACRES SUB
- KN0780216 J W SUB ADDN NO 1 AMENDED
- KN0810152 J W SUB
- KN2018102 J W SUB MATTSON ADDN

Assessor's Map  
Kenai Peninsula Borough



This map is prepared for Kenai Peninsula Borough Assessing Dept. use only and is not intended for conveyance nor is it a survey.  
Note- Assessor's block Numbers Shown in Ellipses  
Assessor's Parcel Numbers Shown in Circles