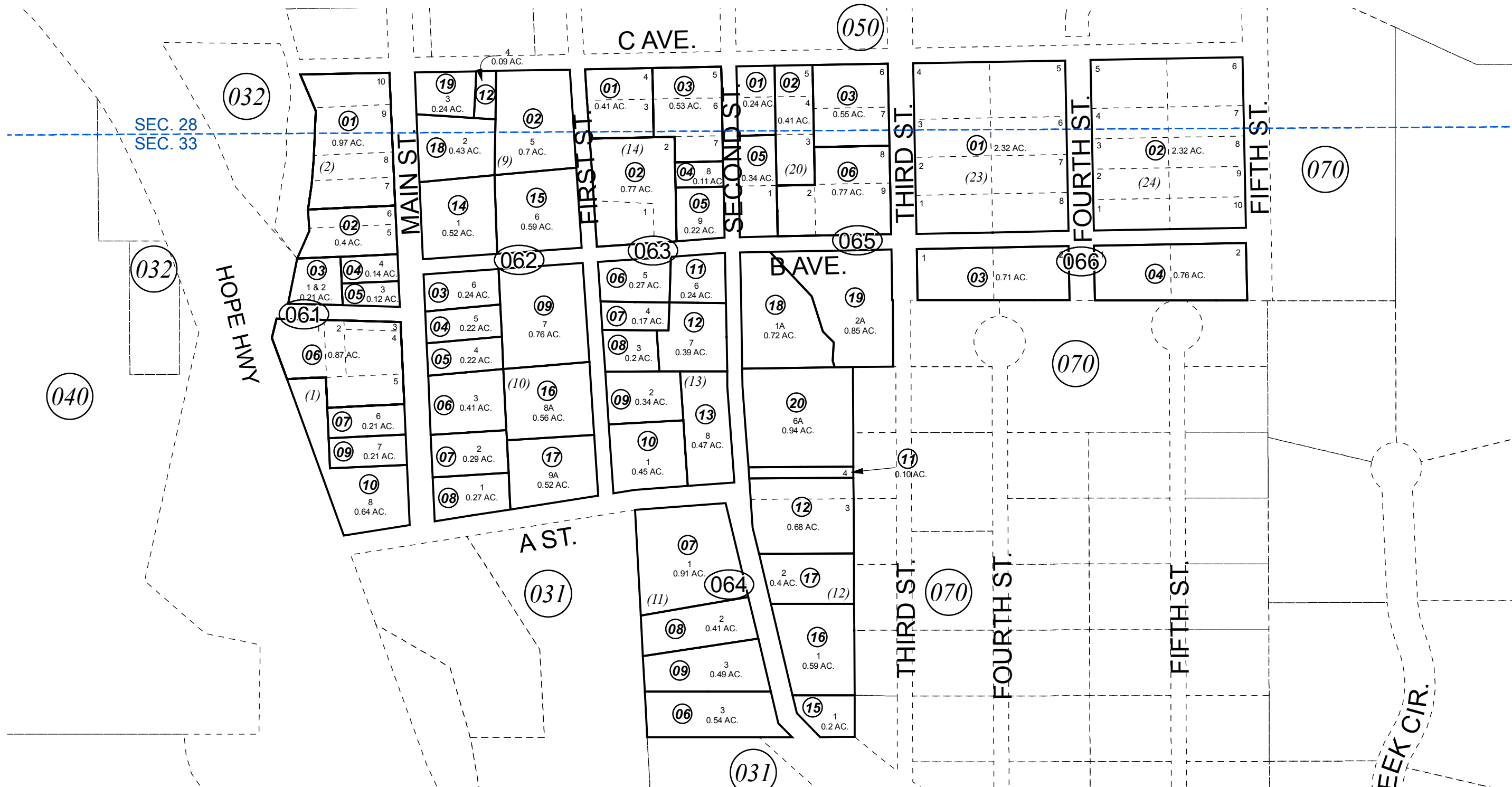


POR. SEC. 28 & SEC. 33, T10N, R02W, S.M.

035-060

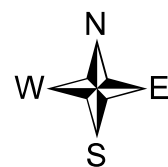


JANUARY 10, 2019

For 2019 assessment roll		
Delete	Add	Revise
	To	
06507	06518	
THRU	THRU	
06510	06520	

Assessor's Map
Kenai Peninsula Borough

SW000012 HOPE TOWNSITE ALASKA SURVEY NO 1485
 SW0940015 HOPE TOWNSITE LOTS 1 - 3 BLOCK 11
 SW0980029 HOPE TOWNSITE HANSON REPLAT
 SW2018016 HOPE TOWNSITE 2017 ADDN



0 50 100 200 Feet

This map is prepared for Kenai Peninsula Borough Assessing Dept. use only and is not intended for conveyance nor is it a survey.

Note- Assessor's block Numbers Shown in Ellipses
Assessor's Parcel Numbers Shown in Circles