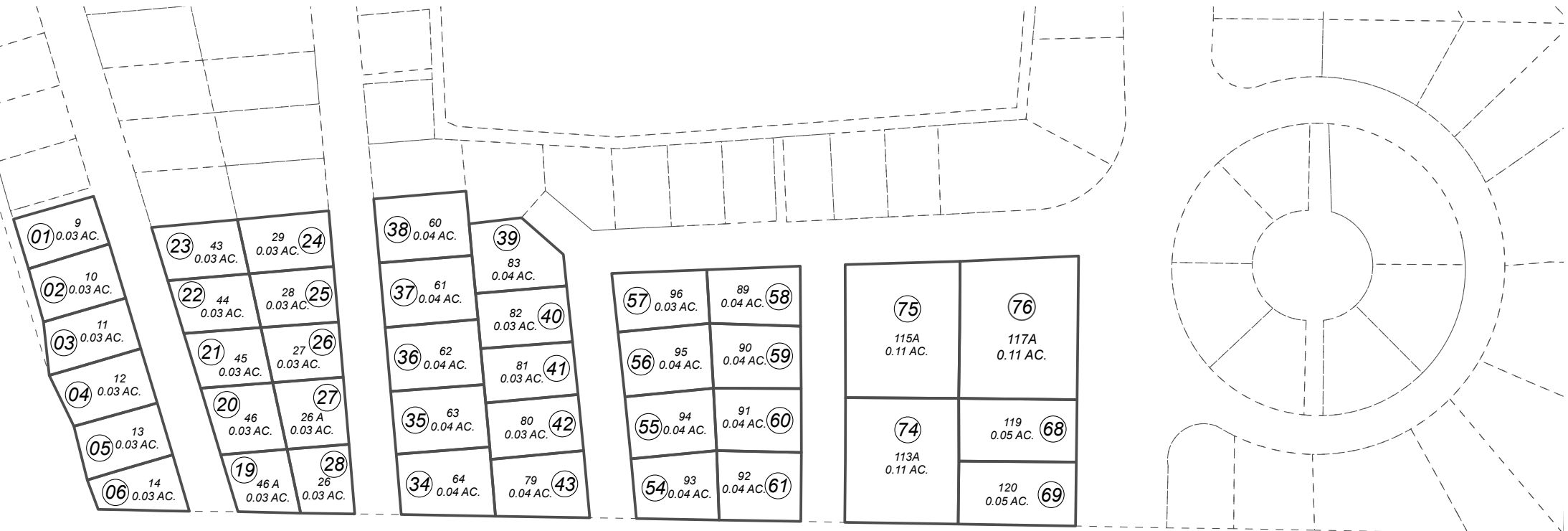


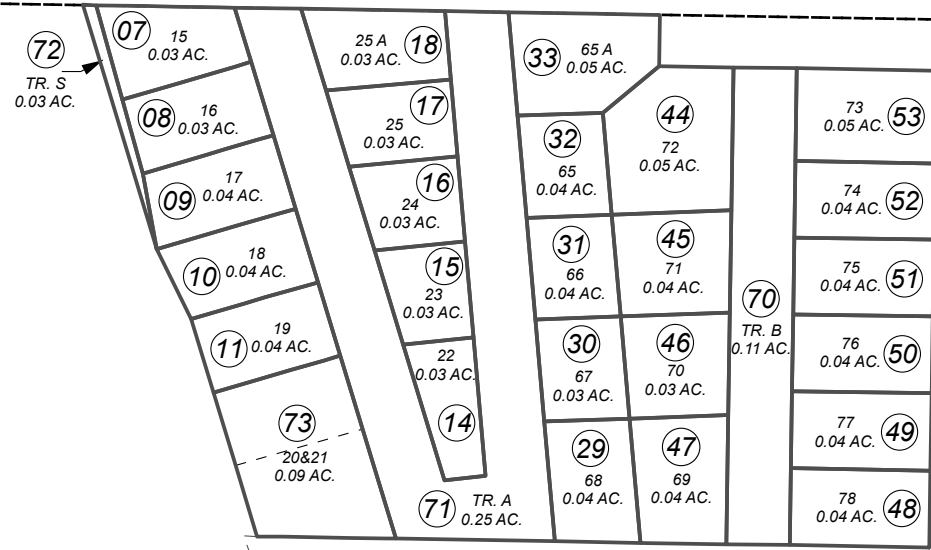
POR. SEC. 19, T05N, R10W, S.M.

057-493

Kenai River



SPRUCE AVE



0 25 50 100 Feet

JULY 17, 2022

For 2023 assessment roll		
Delete	Add	Revise
To		
66,67	76	

Assessor's Map
Kenai Peninsula Borough

POACHER'S COVE PLANNED UNIT DEVELOPMENT KN0870069
POACHER'S COVE REINHART/BOZICH ADDN KN2007088
POACHER'S COVE PDM 2022 REPLAT KN2022026

This map is prepared for Kenai Peninsula Borough Assessing Dept. use only and is not intended for conveyance nor is it a survey.
Note- Assessor's block Numbers Shown in Ellipses
Assessor's Parcel Numbers Shown in Circles