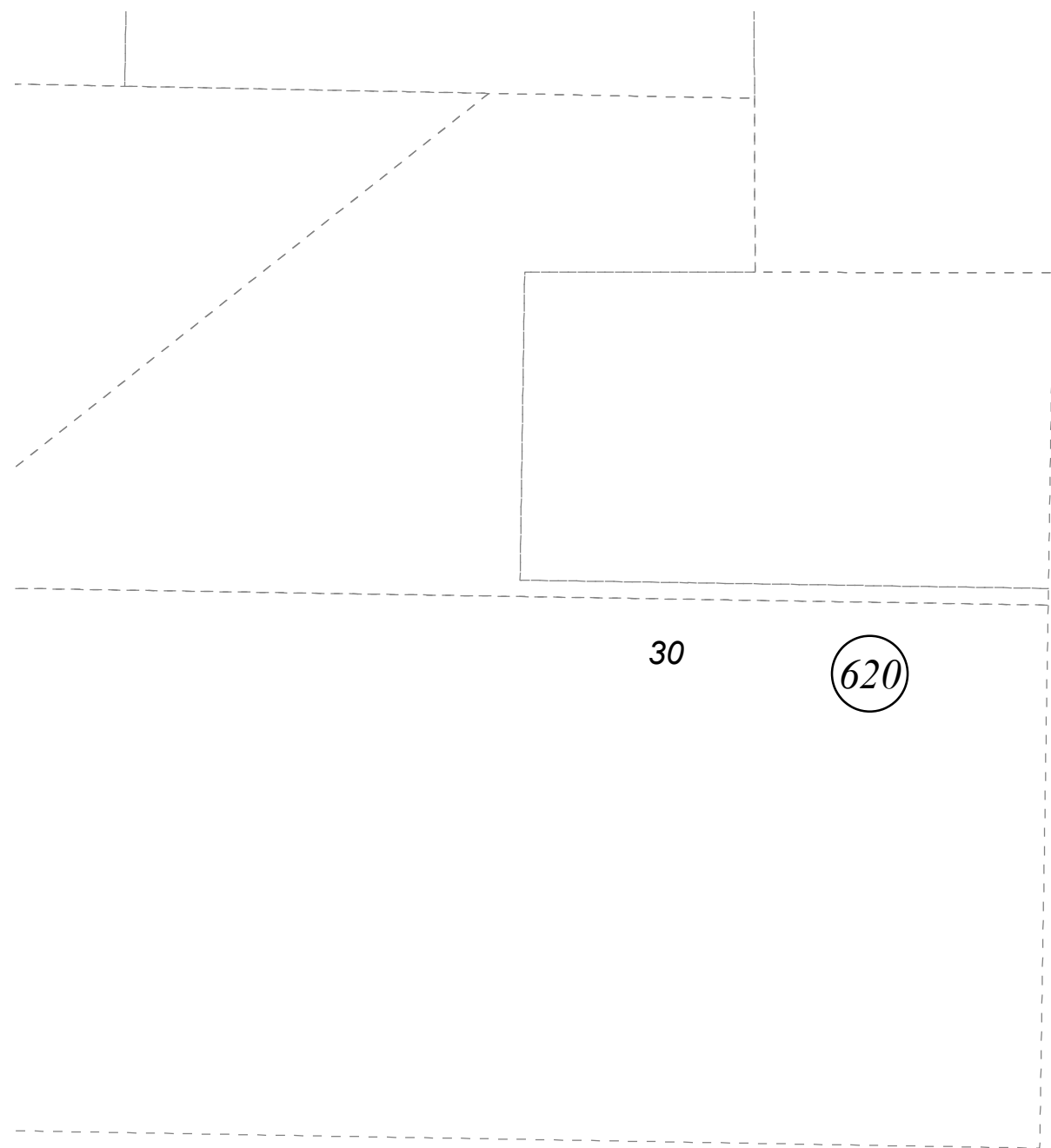


POR. SEC. 30, T05N, R10W, S.M.

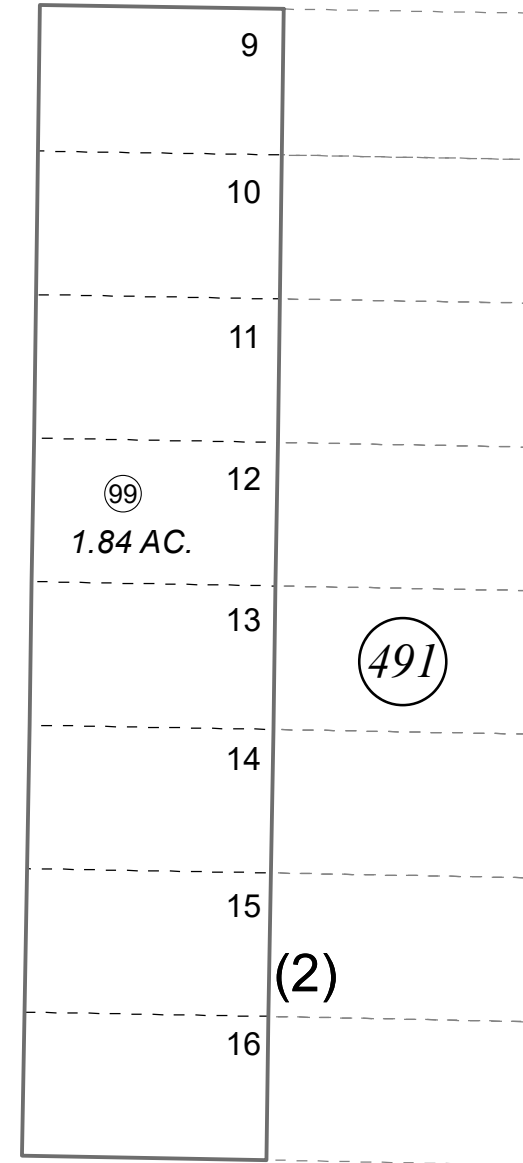
057-494

503

CENTRAL AVE

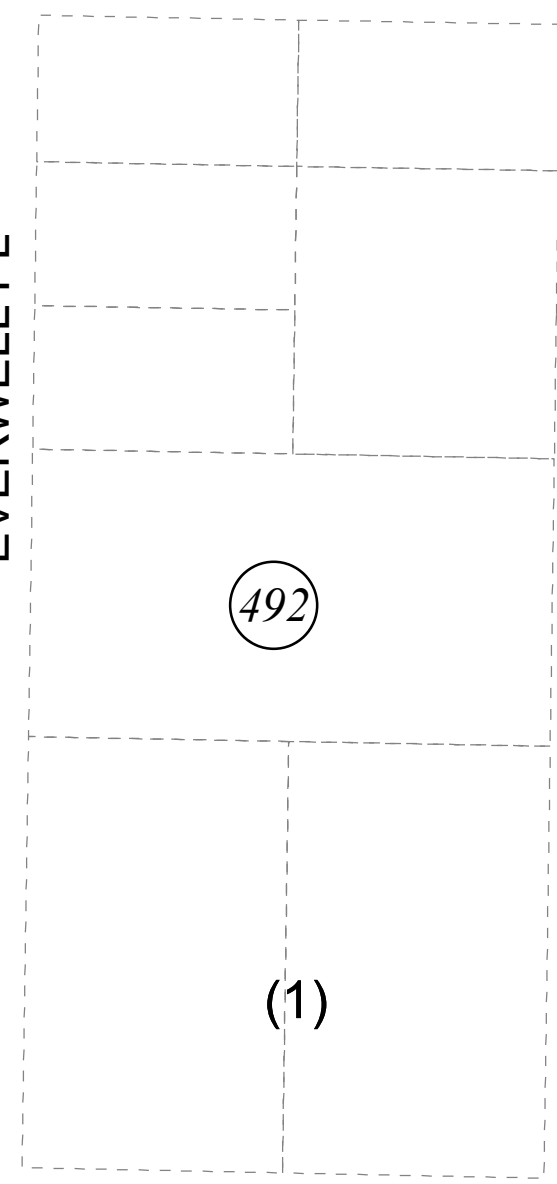


SPINAKER DR

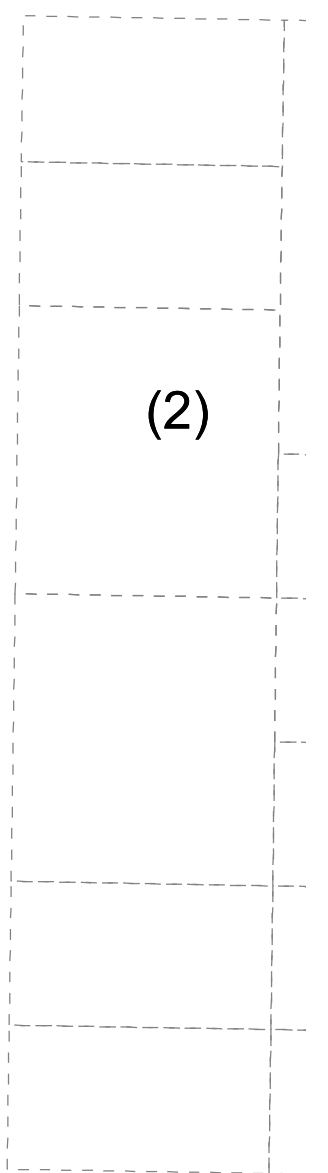


KNIGHT DR

EVERWELL PL



SUNSET PARK ST



BK 059



0 25 50 100 Feet

JANUARY 15, 2021

For 2021 assessment roll		
Delete	Add	Revise
To		
REMOVED TRAILER PARK REFERENCE		

Assessor's Map  
Kenai Peninsula Borough

EVERWELL SUB KN0000937

This map is prepared for Kenai Peninsula Borough Assessing Dept. use only and is not intended for conveyance nor is it a survey.

Note- Assessor's block Numbers Shown in Elipses  
Assessor's Parcel Numbers Shown in Circles